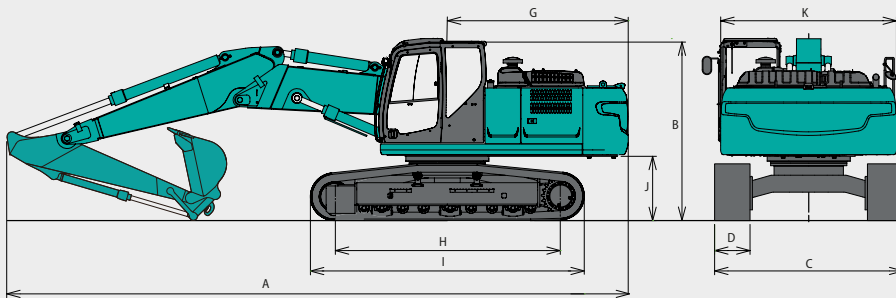


MAIN SPECIFICATIONS



OPTIONAL EQUIPMENT

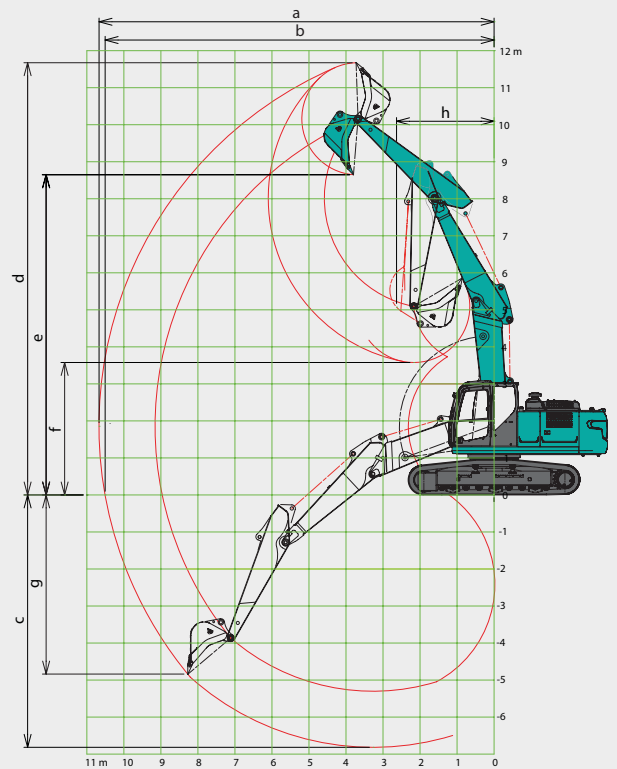
- Various optional arms
- Wide range of shoes
- Front guard
- Cab top work lights (two lights)
- Rain visor
- Lower frame guard
- Additional track guides
- Travel alarm

MODEL	SK260(N)LC-10E	
Rated power output (ISO14396: Without fan)	kW/min ⁻¹	138 / 2,100
Operating weight	kg	26,600 (26,500)
A. Overall length	mm	9,785
B. Overall height	mm	3,100
C. Overall width	mm	3,190 (2,990)
D. Shoe width	mm	600
G. Tail swing radius	mm	3,070
H. Tumbler distance	mm	3,850
I. Overall length of crawler	mm	4,640
J. Counterweight clearance	mm	1,090
K. Overall width of upperstructure	mm	2,980

WORKING RANGES

Unit: mm

Range	Boom	Arm	SK260(N)LC-10E		
			Two piece		
			2.5 m	2.98 m	3.66 m
a- Max. digging reach			10,250	10,670	11,350
b- Max. digging reach at ground level			10,080	10,500	11,190
c- Max. digging depth			6,360	6,810	7,500
d- Max. digging height			11,380	11,670	12,250
e- Max. dumping clearance			8,360	8,650	9,230
f- Min. dumping clearance			4,150	3,580	2,900
g- Max. vertical wall digging depth			4,520	4,920	5,450
h- Min. swing radius			2,910	2,620	2,700



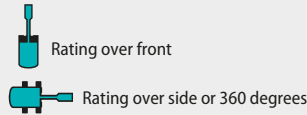
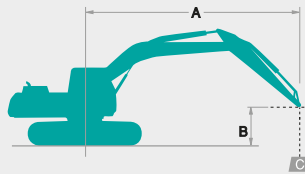
SK260LC-10E		Arm: 2.5 m		Bucket: without		*HEAVY LIFT				At Max. Reach		Radius		
B	A	1.5 m	3.0 m	4.5 m	6.0 m	7.5 m								
7.5 m	ton			*8.8	*8.8	*7.8	7.3			*6.7	6.1	6.63		
6.0 m	ton			*9.5	*9.5	*7.9	7.2	*7.0	4.9	*6.3	4.7	7.67		
4.5 m	ton		*12.7	*12.7	*10.9	10.6	*8.5	7.2	*7.1	4.9	*6.0	4.0	8.32	
3.0 m	ton		*13.2	*13.2	*12.4	10.2	*9.1	7.0	*6.9	4.8	5.5	3.6	8.66	
1.5 m	ton		*14.7	*14.7	*12.4	10.1	9.4	6.6	6.9	4.6	5.4	3.5	8.73	
G.L.	ton		*18.3	18.0	*12.9	9.4	9.4	6.3	6.7	4.4	5.5	3.6	8.53	
-1.5 m	ton	*16.9	*16.9	*20.1	17.9	*13.1	9.1	9.2	6.0	6.6	4.2	*5.7	3.9	8.05
-3.0 m	ton	*27.8	*27.8	*18.9	18.0	*12.7	9.1	*8.7	5.9		*5.1	4.6	7.24	
-4.5 m	ton			*14.9	*14.9	*8.9	*8.9				*6.8	*6.8	5.17	

SK260NLC-10E		Arm: 2.5 m		Bucket: without		*HEAVY LIFT				At Max. Reach		Radius		
B	A	1.5 m	3.0 m	4.5 m	6.0 m	7.5 m								
7.5 m	ton			*8.8	*8.8	*7.8	6.7			*6.7	5.6	6.63		
6.0 m	ton			*9.5	*9.5	*7.9	*6.6	*7.0	4.5	*6.3	4.3	7.67		
4.5 m	ton		*12.7	*12.7	*10.9	9.7	*8.5	6.6	*7.1	4.5	6.0	3.6	8.32	
3.0 m	ton		*13.2	*13.2	*12.4	9.2	*9.1	6.5	*6.9	4.4	5.5	3.3	8.66	
1.5 m	ton		*14.7	*14.7	*12.4	9.2	9.3	6.1	6.9	4.2	5.3	3.2	8.73	
G.L.	ton		*18.3	15.8	*12.9	8.5	9.4	5.7	6.7	4.0	5.5	3.2	8.53	
-1.5 m	ton	*16.9	*16.9	*20.1	15.6	*13.1	8.2	9.2	5.5	6.6	3.8	*5.7	3.5	8.05
-3.0 m	ton	*27.8	*27.8	*18.9	15.8	*12.7	8.2	*8.7	5.3		*5.1	4.1	7.24	
-4.5 m	ton			*14.9	*14.9	*8.9	8.3				*6.8	*6.8	5.17	

2-PIECE BOOM

SK260_{LC} SK260LC-10E **SK260_{NLC}** SK260NLC-10E

LIFTING CAPACITIES



A – Reach from swing centerline to arm top
 B – Arm top height above/below ground
 C – Lifting capacities in tons
 Bucket : Without bucket

SK260LC-10E		Arm: 2.98 m		Bucket: without		*HEAVY LIFT								
		1.5 m		3.0 m		4.5 m		6.0 m		7.5 m		At Max. Reach		
B	A													Radius
7.5 m	ton							*7.3	*7.3			*4.7	*4.7	7.14
6.0 m	ton					*8.3	*8.3	*7.6	7.4	*6.7	5.0	*4.2	*4.2	8.12
4.5 m	ton			*15.3	*15.3	*10.3	*10.3	*8.2	7.0	*6.9	5.1	*4.0	3.8	8.73
3.0 m	ton			*10.3	*10.3	*12.0	*10.1	*8.9	6.8	7.0	4.8	*3.9	3.5	9.06
1.5 m	ton			*16.8	*16.8	*12.8	*10.0	*9.4	6.8	7.0	*4.8	*4.0	3.4	9.12
G.L.	ton	*10.6	*10.6	*18.9	18.2	*12.8	9.6	*9.3	6.4	6.7	4.5	*4.2	3.4	8.94
-1.5 m	ton	*14.9	*14.9	*20.2	17.8	*13.0	9.2	9.5	6.1	6.6	4.5	*4.7	3.7	8.48
-3.0 m	ton	*26.7	*26.7	*19.6	17.9	*13.0	9.1	*9.3	5.9	*5.9	4.3	*5.3	4.2	7.71
-4.5 m	ton	*26.8	*26.8	*17.0	*17.0	*10.7	9.1	*6.2	5.9			*5.6	*5.6	6.20

SK260NLC-10E		Arm: 2.98 m		Bucket: without		*HEAVY LIFT								
		1.5 m		3.0 m		4.5 m		6.0 m		7.5 m		At Max. Reach		
B	A													Radius
7.5 m	ton							*7.3	6.9			*4.7	*4.7	7.14
6.0 m	ton					*8.3	*8.3	*7.6	6.8	*6.7	*4.7	*4.2	4.0	8.12
4.5 m	ton			*15.3	*15.3	*10.3	10.0	*8.2	6.7	*6.9	4.7	*4.0	3.4	8.73
3.0 m	ton			*10.3	*10.3	*12.0	9.5	*8.9	*6.5	7.0	*4.4	*3.9	3.1	9.06
1.5 m	ton			*16.8	*16.8	*12.8	9.4	*9.4	6.2	7.0	4.4	*4.0	3.0	9.12
G.L.	ton	*10.6	*10.6	*18.9	16.0	*12.8	8.7	*9.3	5.8	6.7	4.1	*4.2	3.0	8.94
-1.5 m	ton	*14.9	*14.9	*20.2	15.6	*13.0	8.3	9.5	5.5	6.6	4.1	*4.7	3.2	8.48
-3.0 m	ton	*26.7	*26.7	*19.6	15.7	*13.0	8.2	*9.3	5.3	*5.9	3.9	*5.2	3.7	7.71
-4.5 m	ton	*26.8	*26.8	*17.0	16.2	*10.7	8.2	*6.2	5.4			*5.5	5.2	6.20

SK260LC-10E		Arm: 3.66 m		Bucket: without		*HEAVY LIFT								
		1.5 m		3.0 m		4.5 m		6.0 m		7.5 m		At Max. Reach		
B	A													Radius
7.5 m	ton							*5.9	*5.9	*5.0	*5.0	*3.9	*3.9	8.02
6.0 m	ton							*6.3	*6.3	*6.0	5.1	*3.5	*3.5	8.90
4.5 m	ton			*8.7	*8.7	*8.2	*8.2	*7.6	7.1	*6.5	5.2	*3.4	3.3	9.47
3.0 m	ton			*13.9	*13.9	*11.1	10.2	*8.4	7.0	*6.9	4.9	*3.4	3.0	9.77
1.5 m	ton			*14.2	*14.2	*12.4	9.8	*9.1	*6.9	6.8	4.9	*3.7	2.9	9.83
G.L.	ton	*9.2	*9.2	*18.1	*18.1	*12.7	9.8	9.1	6.4	6.7	4.6	*3.8	2.9	9.65
-1.5 m	ton	*12.6	*12.6	*19.8	17.9	*12.7	9.2	9.2	6.1	6.5	4.3	*4.4	3.1	9.24
-3.0 m	ton	*16.2	*16.2	*19.9	17.7	*13.0	9.0	9.3	5.9	6.5	4.2	*4.8	3.5	8.53
-4.5 m	ton	*27.5	*27.5	*18.5	17.9	*12.2	9.0	*8.2	5.8			*4.3	4.3	7.43

SK260NLC-10E		Arm: 3.66 m		Bucket: without		*HEAVY LIFT								
		1.5 m		3.0 m		4.5 m		6.0 m		7.5 m		At Max. Reach		
B	A													Radius
7.5 m	ton							*5.9	*5.9	*5.0	4.8	*3.9	*3.9	8.02
6.0 m	ton							*6.3	*6.3	*6.0	4.7	*3.5	3.4	8.90
4.5 m	ton			*8.7	*8.7	*8.2	*8.2	*7.6	6.5	*6.5	4.7	*3.4	3.0	9.47
3.0 m	ton			*13.9	*13.9	*11.1	9.3	*8.4	6.4	*6.9	4.5	*3.3	2.7	9.77
1.5 m	ton			*14.2	*14.2	*12.4	9.9	*9.1	6.3	*6.7	4.5	*3.5	2.6	9.83
G.L.	ton	*9.2	*9.2	*18.1	16.5	*12.7	8.8	9.1	5.8	6.7	4.2	*3.8	2.6	9.65
-1.5 m	ton	*12.6	*12.6	*19.8	15.7	*12.7	8.3	9.2	5.5	6.5	3.9	*4.3	2.8	9.24
-3.0 m	ton	*16.2	*16.2	*19.9	15.5	*13.0	8.0	9.3	5.3	6.5	3.8	*4.8	3.1	8.53
-4.5 m	ton	*27.5	*27.5	*18.5	15.7	*12.2	8.1	*8.2	5.2			*4.3	3.9	7.43

NOTES:

- Do not attempt to lift or hold any load that is greater than these lift capacities at their specified lift point radius and heights. Weight of all accessories must be deducted from the above lift capacities.
- Lift capacities are based on machine standing on level, firm, and uniform ground. User must make allowance for job conditions such as soft or uneven ground, out of level conditions, side loads, sudden stopping of loads, hazardous conditions, experience of personnel, etc.
- Arm top defined as lift point.
- The above lifting capacities are in compliance with SAE J/ISO 10567. They do not exceed 87 % of hydraulic lifting capacity or 75 % of tipping load. Lifting capacities marked with an asterisk (*) are limited by hydraulic capacity rather than tipping load.
- Operator should be fully acquainted with the Operator's and Maintenance Instructions before operating this machine. Rules for safe operation of equipment should be adhered to at all times.

Note: This catalog may contain attachments and optional equipment that are not available in your area. And it may contain photographs of machines with specifications that differ from those of machines sold in your areas. Please consult your nearest KOBELCO distributor for those items you require. Specialist equipment is needed to use this machine in demolition work. Before using it please contact your KOBELCO dealer. Due to our policy of continuous product improvements all designs and specifications are subject to change without advance notice.
 Copyright by **KOBELCO CONSTRUCTION MACHINERY EUROPE B.V.** No part of this catalog may be reproduced in any manner without notice.

KOBELCO CONSTRUCTION MACHINERY EUROPE B.V.

Veluwezoom 15
 1327 AE Almere
 The Netherlands
www.kobelco-europe.com

Enquiries To: