

KOBELCO

SK140SRL-7

Performance X Design



SK140SRL LOGGING SPECIFICATION

SK140SRL of KOBELCO has realised a completely new value by harmonising PERFORMANCE – greater efficiency and productivity with an increased power and speed and DESIGN – operator-based operability and comfort, refusing to accept any compromises.

Wide shoes for minimum ground pressure

You can count on smooth and dependable travel with the longer crawler and wider shoe that are usually used on machines the next class up.



Longer Crawler Length:
3,790 mm



Top-Class Ground Clearance:
580 mm

Ground Pressure: **28 kPa at 900 mm shoe**

* Three track guides each side are installed as standard.

Digging cycle time

Shortened by **10%**

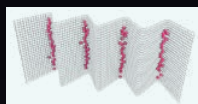
(Compared to the SK140SRLC-5 model)



iNDr



iNDr Integrated
Noise & Dust
Reduction
Cooling System



How the filter catches dust

iNDr Filter

A high-density mesh filter blocks dust intruding during air intake. This prevents the cooling device and the air cleaner from clogging with dust and maintains their performances. The ridges of the corrugated filter allow the air to pass through, and the grooves collect the dust, which prevents the filter from clogging.

The ultimate in simple and elegant design

The jog dial integrates multiple functions to realise simple operations. In addition, the switches and dials have LED backlights – they provide a bright, clear view in the dark and set a luxurious mood.



10-inch colour monitor (the largest in the industry)

The easy-to-operate menu screen facilitates reading of important information. Images from the built-in cameras can be checked on the large screen, which helps secure safety.



We Save You Fuel
Achieving a Low-Carbon Society

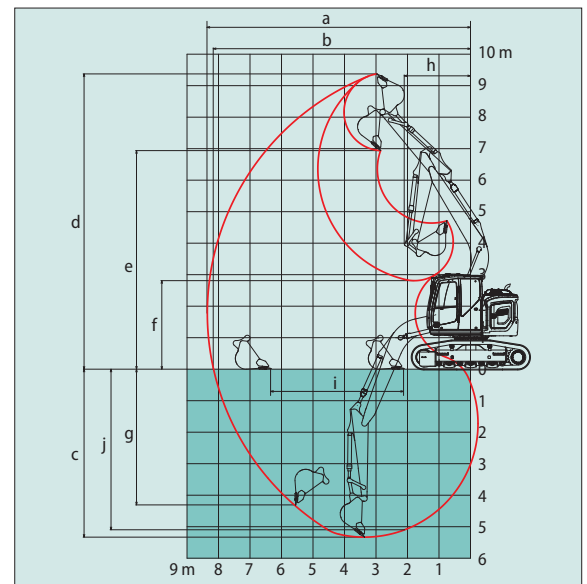
SPECIFICATIONS

Model		SK140SRL		
Type		SK140SRL-7		
PERFORMANCE				
Bucket Capacity ISO heaped	m ³	0.5		
Swing Speed	min ⁻¹	11.0		
Travel Speed	km/h	5.3/3.0		
Gradeability	% (degree)	70 (35)		
Bucket Digging Force	kN	105.4		
Arm Crowding Force	kN	64.0		
Drawbar Pulling Force	kN	153		
ENGINE				
Model		ISUZU MOTORS LIMITED 4JJ1XDDV A01		
Type		Four cycle, water cooled, overhead camshaft, vertical in-line, direct injection type, with turbocharger		
Power Output (ISO14396)	kW/min ⁻¹	86/2,200		
Max. Torque (ISO14396)	N-m/min ⁻¹	375/1,800		
Displacement	L	2,999		
Fuel Tank	L	186		
DEF/Urea Tank	L	26		
HYDRAULIC SYSTEM				
Pumps		Double variable displacement axial piston pumps with a gear pump		
Max. Discharge Flow	L/min	2 x 142, 1 x 66		
Relief Valve Setting (Main)	MPa	34.3		
Swing circuit	MPa	28.0		
Travel circuit	MPa	34.3		
Hydraulic Oil Tank (System)	L	89.9 (176.0)		
WEIGHT				
Counterweight		Standard		
Shoe Width	mm	700	800	900
Operating Weight	kg	16,900	17,100	17,400
Ground Pressure	kPa	35.9	31.8	28.7
Counterweight		+ 580 kg		
Shoe Width	mm	700	800	900
Operating Weight	kg	17,500	17,700	17,950
Ground Pressure	kPa	37.1	32.9	29.7
Counterweight		+ 1,000 kg		
Shoe Width	mm	700	800	900
Operating Weight	kg	17,900	18,100	18,400
Ground Pressure	kPa	38.0	33.7	30.3

WORKING RANGES

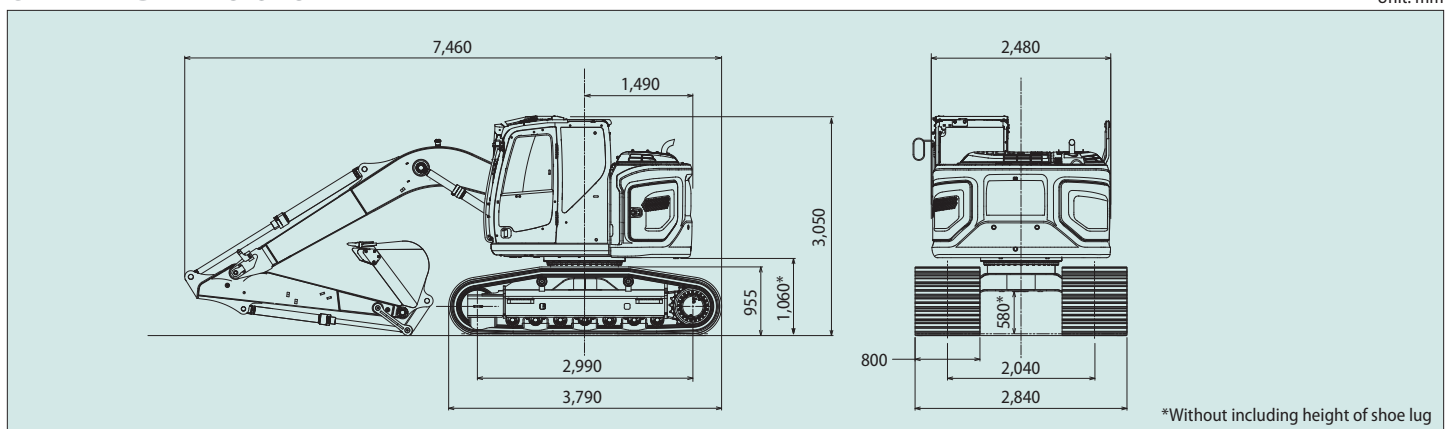
Unit: m

MODEL	SK140SRL
Arm length	2.38 m
a- Max. digging reach	8.37
b- Max. digging reach at ground level	8.17
c- Max. digging depth	5.33
d- Max. digging height	9.37
e- Max. dumping clearance	6.94
f- Min. dumping clearance	2.81
g- Max. vertical wall digging depth	4.31
h- Min. swing radius	2.13
i- Horizontal digging stroke at ground level	4.22
j- Digging depth for 8' (2.4 m) flat bottom	5.10
Bucket capacity (ISO heaped)	0.5 m ³



GENERAL DIMENSIONS

Unit: mm



Note: This catalogue may contain attachments and optional equipment that are not available in your area. And it may contain photographs of machines with specifications that differ from those of machines sold in your areas. Please consult your nearest KOBELCO distributor for those items you require. Due to our policy of continuous product improvements all designs and specifications are subject to change without advance notice.

Copyright by **KOBELCO CONSTRUCTION MACHINERY CO., LTD.** No part of this catalogue may be reproduced in any manner without notice.

KOBELCO CONSTRUCTION MACHINERY EUROPE B.V.

Veluwezoom 15
1327 AE Almere
The Netherlands
www.kobelco-europe.com

Enquiries To: