

REF: CKE1800-1F – JC04-02164

## **KOBELCO – CKE1800-1F - 2010**

Further to your request, please see the specification details below regarding an available used KOBELCO lattice boom crawler crane. Please do not hesitate to contact us should you require any additional information, photographs, or to arrange a detailed inspection. Please note:

1. The machine is sold as seen, no warranty is implied or given.
2. A fixed price unit inspection by a KOBELCO engineer is available upon request.

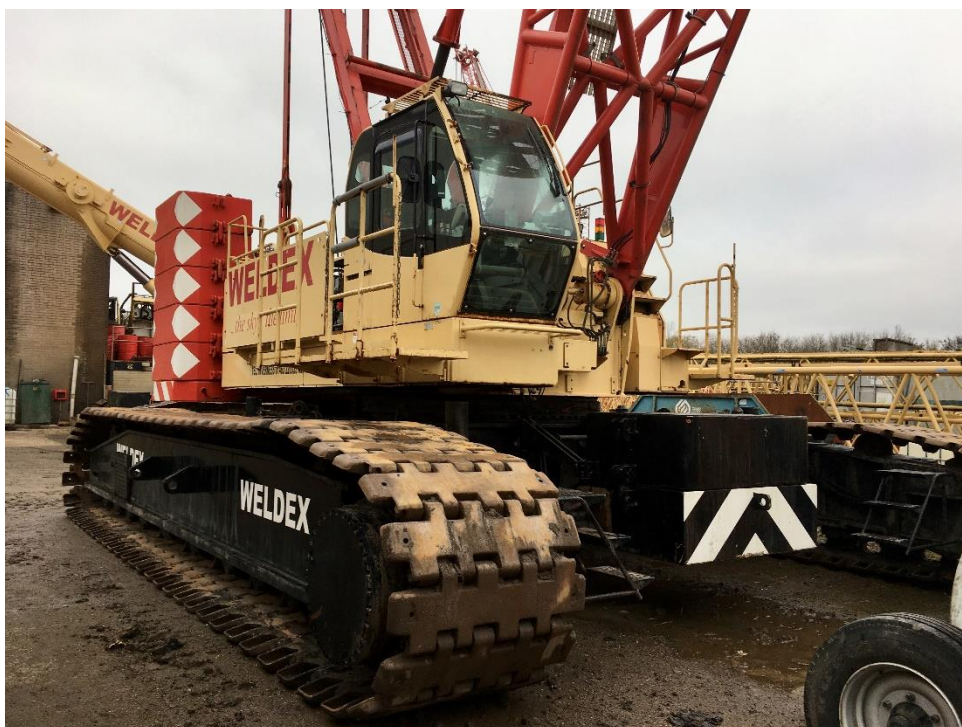
### **Unit Specification**

- 1No KOBELCO CKE1800-1F
- Serial No.: JC04-02164
- Year of manufacture: 2010
- Machine Hours (Approximate): 13,677 +/-
- Lifting capacity: 180 tonnes
- Main boom: 54.9m + Auxiliary Sheave
- Hoist winches: 2x Standard winches fitted with 25.4mm wire rope
- Wire Rope Length 430m working length with 510m storage length (main)
- Rated Line Pull: 132kN (13.4 tf)
- Engine: Hino PC11C-UN Diesel Engine (Europe Stage 3A, USA EPA Tier 3)
- Hook Blocks: 160t, 70t, 35t, 13.5t ball hook
- New Kobelco safe load indicator (ML system) fitted
- Camera system fitted
- Wind speed indicator fitted
- 1000 Hour service recently undertaken
- New top rollers fitted to undercarriage
- Recently cleaned
- Immediately available Ex-Works UK

**Price Ex Works available upon request, please contact [usedcrane-eu@kobelco.com](mailto:usedcrane-eu@kobelco.com)**

Tel: +44 (0) 1342 301122 | Mob: +44 (0) 7471 994460

REF: CKE1800-1F – JC04-02164



Tel: +44 (0) 1342 301122 | Mob: +44 (0) 7471 994460