

# KOBELCO

## Cranes Europe

Strength through experience since 1930

Issue 4/Volume1  
Autumn 2021



**NEWS:**  
**Crane Finder**  
**website launched**  
**Spare parts**  
**service expands**

**PROJECTS:**  
**Jodrell Bank**  
**High Speed 2**  
**And more...**

**CRANES:**  
**CKE800G**  
**CKE900G-3**  
**CKE1350G-2**



# KOBELCO

STRENGTH THROUGH EXPERIENCE SINCE 1930

## KOBELCO G-SERIES

- EU Stage 5 compliant power plant
- Up to 25% fuel consumption thanks to G-mode: G-Engine, G-winch and Auto-Idle-Stop
- Ergonomic, luxurious, spacious cab with joysticks
- Dual pump flow for clamshell, bucket or material handling\*
- Efficient transport
- Fast assembly / disassembly
- Tractor type crawlers\*
- Over-swing preventative device\*
- Low maintenance
- Excellent reliability
- Worldwide service network

\*optional items

<http://www.kobelcocm-global.com>

KOBELCO CONSTRUCTION MACHINERY EUROPE BV  
FOR EUROPE, RUSSIA, CIS  
TEL: +31-(0)36-549-5510  
Jos.verhulst@kobelco.com

FOR UK, IRELAND AND SOUTH AFRICA  
TEL: +44-(0)1342-301122  
Mark.evans@kobelco.com

KOBELCO CONSTRUCTION MACHINERY EUROPE BV

# CONTENTS

05

### Comment

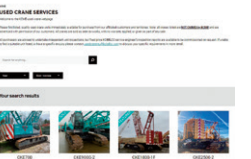
Masakazu Usami Division Director Cranes, Kobelco Construction Machinery Europe, previews our latest issue



06

### Used Crane Finder Service

Kobelco Cranes Magazine talks to Alex Burt about the company's recently launched Used Crane Finder Service



09

### Hawks - High Speed 2

Kobelco CKE900G plays central role in delivering TBM launch pad for Align Joint Venture's £1.6 billion High Speed 2 contract



12

### Active Crane Hire - Rental fleet expansion

Active Crane Hire has added new Stage V/Tier 5 compliant Kobelco CKE900G-3 crawler crane to its rental fleet as it expands customer offering



14

### Q Plant – Jodrell Bank

Kobelco CKE800Gs play starring role ahead during construction of cultural centre at Jodrell Bank Observatory



17

### Delden - Four of a kind

Delden Crane Hire takes delivery of the first of four Stage v/Tier 5 compliant Kobelco CKE900G-3 crawler cranes



20

### Anderson - New CKE900G-3 delivered

Anderson Crawler Crane Hire has taken delivery of its second Kobelco CKE900G-3 crawler crane as it continues its rental fleet expansion



22

### Balfour Beatty - Old Oak Common, HS2

Sub-contractor SB3 is using four Kobelco CKE1350G-2 crawler cranes at High Speed 2's Old Oak Common during construction of the station box.



24

### UK spare parts supply line

Kobelco crawler crane spare parts supply chain secured following departure from EU thanks to trade deals with Japan and Singapore



26

### Stay in touch

Join Kobelco Cranes on social media and stay up-to-date with all the latest news and competitions!



COVER: A CKE1350 lifting a rebar cage for the SB3 JV at HS2's Old Oak Common during construction of the station box's diaphragm walls and associated structures.



# STOCK CRANES FOR SALE



**Brand new crawler cranes available from stock, from 80-250 tonne lifting capacity**

**Contact Mark Evans, Kobelco Construction Machinery Europe (UK) - Crane Division.**

**T: +44 (0) 1342 301122 M: +44 (0) 7880 381310**

**Unit 9, The Felbridge Centre, East Grinstead, West Sussex, RH19 1XP**  
**mark.evans@kobelco.com kobelco-europe.com/products-cranes/**

“



**Masakazu Usami**  
 Division Director Cranes  
 (Kobelco Construction Machinery Europe)

Hello and welcome to Issue 4 of our customer magazine, which focusses exclusively on how Kobelco cranes are helping you, our customer, build some of the UK's most important infrastructure projects.

A country's infrastructure is its lifeblood. Without it, goods and people cannot reach their markets or destinations, whether domestic or international. Throughout much of the Covid pandemic our customers and their cranes continued working hard building some of the UK's most important infrastructure, including Thames Tideway and High Speed 2.

Now, thanks to you and the care you have shown during this testing time, we are moving out of the Covid pandemic and into a more 'normal' business landscape. We have noticed both enquiry levels and orders received have returned, and we are looking forward to continuing in a similar vein going forward.

Kobelco Cranes Europe are proud to be helping build the UK's infrastructure and we look forward to continuing to work with you, our valued customers in delivering these projects for years to come!

“

KOBELCO  
 CONSTRUCTION  
 MACHINERY EUROPE  
 B.V. (UK)  
 Unit 9, The Felbridge  
 Centre, East  
 Grinstead, West Sussex  
 RH19 1XP, UK  
 Tel: +44-1342-301122

KOBELCO  
 CONSTRUCTION  
 MACHINERY EUROPE  
 B.V. (The Netherlands)  
 Veluwezoom 15, 1327 AE  
 Almere, The Netherlands  
 Tel: +31-36-549-5510

KOBELCO  
 CONSTRUCTION  
 MACHINERY EUROPE  
 B.V. (Germany)  
 Germany, Austria and  
 Switzerland  
 Tel: +49 (0)172 7946087

DISTRIBUTORS  
 Russian Federation  
 FKR Machinery  
 105187, Russia, Moscow,  
 Room 1, Office 4,  
 Mironovskaya Street  
 Tel: +7-495-981-4545

Republic of Turkey  
 Das Otomotiv ve  
 Jeneratör Tic. A.Ş.  
 Gardenya Plaza 5, Kat: 2

34758 Ataşehir - İstanbul  
 - TÜRKİYE  
 Tel: +90) 216 456 57 05  
 People's Democratic  
 Republic of Algeria  
 Manyi Machinery  
 Centre des affaires  
 AL-Qods, bureau 08-07  
 niveau 04 Chéraga Alger  
 - Algeria.  
 Tel: +213 (0) 21-343-173

HEAD OFFICE - JAPAN  
 KOBELCO  
 CONSTRUCTION  
 MACHINERY CO., LTD  
 Tokyo, Japan  
 Tel: +81-(0)3-5789-2121



**SEE US ON STAND**

**113**



**EAST OF ENGLAND SHOWGROUND**  
**22ND - 23RD SEPTEMBER 2021**

CRANES, ACCESS PLATFORMS, TELEHANDLERS & EVERYTHING IN BETWEEN



# Used crane finder website launches

Following the successful launch of its 'one-stop-shop' Used Crane Finder Service at the beginning of this year, we sat down with Kobelco Cranes' Alex Burt to hear how this innovative new service can benefit customers across the EAME region



**Kobelco Cranes Magazine (KCM): Alex, can you tell us what the new, Used Crane Finder Service is, and why it's been launched now?**

**Alex Burt (AB):** Our new, Used Crane Finder Service aims to connect Kobelco Cranes' customers who are looking to buy or sell a crane, with potential buyers and sellers across the Europe, Africa, and the Middle East (EAME) region.

The principle behind the service is to offer new and existing customers a comprehensive remarketing portal for their existing crane units. We aim to achieve a quicker, more streamlined sales or purchase experience by presenting all technical, configuration and factual data for each unit online, while our 24/7 enquiry service means we can respond seamlessly to any customer enquiry.

We're able to do this using our global Kobelco network, so can offer used units to new territories and wider global markets. Plus, we have an active and growing database of customers' model requirements that allows us to strategically offer cranes before they're published to the dedicated website, or other promotion channels, for an even faster, no-cost premium service.

**KCM: At the end of 2020, the UK's Williams Shipping became the first customer to use the service with the successful delivery of a used CKE700-1F to its dock in Pembroke, Wales. Can you tell us how that came about?**

**AB:** The process was incredibly simple: we were contacted directly by Philip Williams, Managing Director – Marine, Williams Shipping, and advised it was looking for a 'new', 70 to 80 tonne capacity crane, to replace a 50-tonne capacity unit in its fleet.

Following the enquiry, I contacted an existing client who had several quality, used units for sale, including several CKE700-1Fs. Once seller and buyer were contacted and introduced, we arranged inspections for the 2009 model CKE700-1F, which was supplied with a 48.8m main boom, auxiliary sheave and 12.2m fly jib, and the 50-tonne capacity crane Williams Shipping was selling, alongside replacement parts - top rollers, solenoids, etc – and help negotiating the final price. Following this we assisted the logistics for collection and transportation between the customers. And, post-delivery, we provided a bespoke, after-sales services that allowed Williams Shipping to fully configure the crane to their exact requirements.

**KCM: How can potential and existing customers access the new service?**

**AB:** In January, this year we launched a dedicated, secure website to cater for companies looking to expand their fleet with a used crane. New units are being added all the time, and we currently have a large range of different cranes available immediately. Potential and returning customers can browse the listings and request pricing and more at the click of a mouse!

Customers looking to advertise units for sale can use our dedicated email enquiry account - [usedcrane-eu@kobelco.com](mailto:usedcrane-eu@kobelco.com) - to request a listing. Once the enquiry's been received a Kobelco representative will liaise with the client to gather all the information needed - specification details, including sales and servicing history, taking photos etc.

Once compiled we then provide the customer with a proof of their listing for final checking, before publishing. Once on our website the next stage kicks in, which

includes promotion via our other digital channels, including LinkedIn and Instagram, alongside a targeted email campaign. If requested, we can promote the crane anonymously removing company details and liveries. The aim is to give the customer, whether they are selling or buying, as much control over the process as they need, or feel comfortable with.

**KCM: What advantages are there for customers wanting to use the service?**

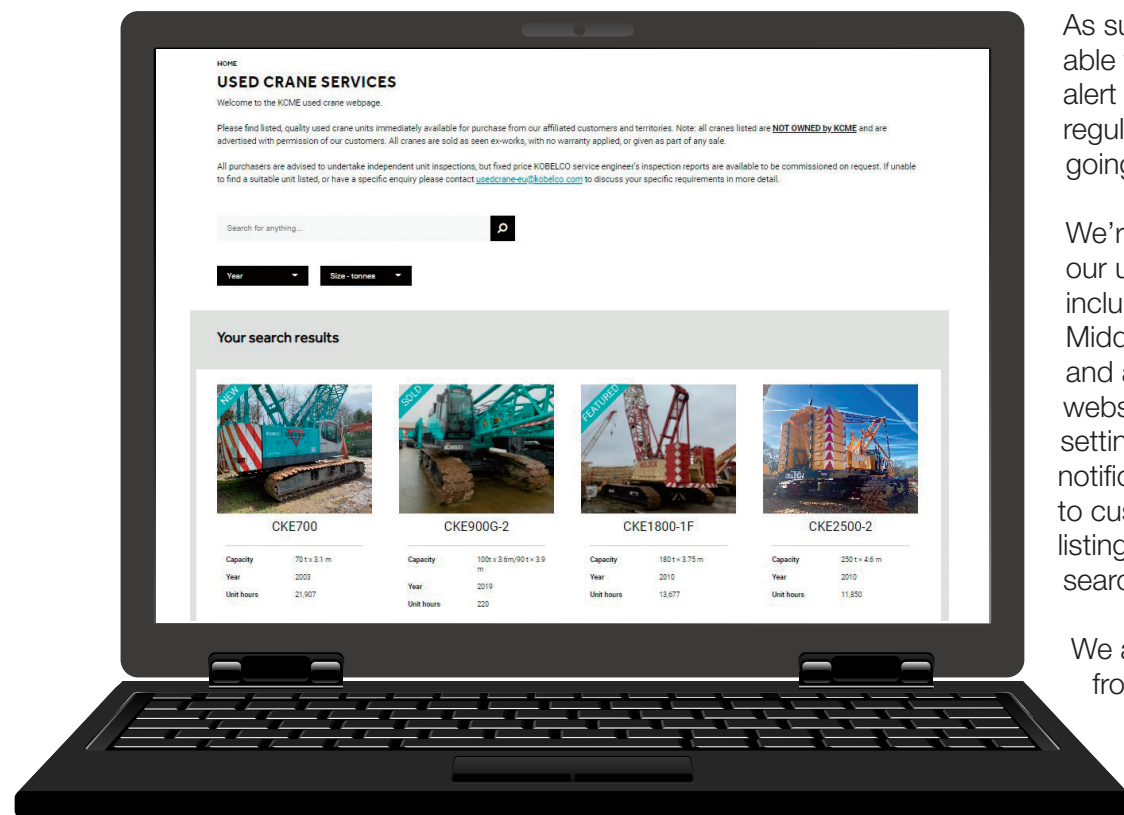
**AB:** Customers using the service can easily and quickly find the crane they are looking focusing the new website's listings, which contain the crane's sales and service history, alongside specification details. For peace of mind before purchasing, we can also offer servicing before buying, a replacement parts service, if needed, as well as arranging transport from seller to purchaser. Letting us handle any enquiries means we can vet potential customers and reduce unnecessary admin when selling a crane. Of course, some customers will like that engagement in the process, so we will always try to tailor the process, so it meets their needs.

**KCM: How does Kobelco Cranes ensure the quality of the cranes it sources?**

**AB:** None of the cranes listed are owned by KCME and are sold as seen, ex-works, with no warranty applied, or given as part of any sale. We advise potential purchasers to undertake independent unit inspections, but fixed price KCME service engineer's inspection reports are available and can be commissioned on request.

This provides customers with the confidence they need to make the purchasing decision that's right for them, while ensuring what they're buying has been overseen by a





Kobelco expert with full disclosure of its exact condition.

This avoids hidden costs, or disputes further down the line for both sellers and buyers. In addition, it can also highlight any replacement parts that might be needed, or future servicing requirements new customers should consider, which can help in negotiating the final sales price.

Most customers maintain their units to an excellent standard, so it's rare to have any significant recommendations other than that of standard consumables, or items to check for future reference.

Doing this also mitigates against the current travel restrictions in place due to COVID-19, which makes unit inspections in person more difficult, or impossible for overseas enquiries. Furthermore, we can also assist in arranging onward logistics - transport, shipping and insurance, as we have an existing network that enables us to leverage considerable cost and time savings.

**KCM: Is the service only for the UK, or have you rolled it out to cover the whole of the EAME region?**

**AB:** Following the launch of the website in January this year, we now have almost 20 cranes listed from across the EAME region, with the majority in the UK. I'm currently working on deals with customers in South Africa, Nigeria, Russia, and Eastern Europe. We currently have strong demand from regions that require Stage III (Tier 3) engines and HD cranes. As a result, we urge anyone with these units for sale to contact us with a view to helping them the best price for their machine.

**KCM: Are there any plans to expand the service?**

**AB:** We were aware of the demand for second-hand cranes across the region, but the strength, durability, and long life of our products, alongside the quality of the engineering offered as standard on all our machines, means we've bowled over by the number of enquiries and potential customers.

As such we expect to be able to offer a dedicated alert service, alongside a regular, emailed listing going forward.

We're currently expanding our unit offerings to include units from our Middle East sales region and aim to update the website weekly, as well as setting up an email push notification service to customers for new listings, if it meets their search criteria.

We also collect details from non-Kobelco crawler customers looking to sell and offer this service on an ad-hoc basis.

We hope to expand the website to list these units, however, after-sales services and unit inspections for these units are not possible for us to undertake.

Right now, for customers looking to source a 'new' used Kobelco crawler crane, visit [kobelco-europe.com/used-crane-services/](http://kobelco-europe.com/used-crane-services/) to see all the cranes currently available. If you're unable to find a suitable unit, or have a specific enquiry, please contact me on [usedcrane-eu@kobelco.com](mailto:usedcrane-eu@kobelco.com) to discuss your specific requirements in more detail.

If you have a used crane for sale, or are looking to buy a used crane contact Alex Burt, Used Crane Sales Representative, Kobelco Construction Machinery Europe (UK), on +44 (0)1342 301122 (office), +44 (0)7471 994460 (mobile), or email [alex.burt@kobelco.com](mailto:alex.burt@kobelco.com)



# We have lift off!

**Kobelco CKE900G plays central role in delivering TBM launch pad for Align Joint Venture's £1.6 billion High Speed 2 contract**



A Kobelco CKE900G-2 crawler crane on-hire from Dartford-based crane rental company Hawks, has played a key role in delivery of the tunnel-boring machine (TBM) 'launch pad' for the UK's prestigious, £98 billion High Speed 2 line (HS2), as part of the Align joint venture's C1 package.

The £1.6 Billion C1 package, awarded to the Align joint venture (Bouygues Travaux Publics, Sir Robert McAlpine, and VolkerFitzpatrick) in July 2017, consists of 21.6km of high-speed

rail infrastructure, including a 3.37km-long viaduct, the 16km-long, 9.1m-diameter twin-bored, Chiltern tunnel (the longest on the project), and five ventilation shafts with associated infrastructure.

The 90-tonne capacity CKE900G arrived on site in July 2020 on a six-month rental contract to aid construction of the approximate 150m-long, 50m-wide TBM 'launch pad', next to what will eventual be the finished tunnel exit at Mantle's Wood, north of the village of Hyde Heath, Buckinghamshire.

During construction of the concrete podium, the CKE900G was used for "typical civils duties", according to Hawks' Managing Director Elliot Hawkins, including moving rebar for the launch pad, and 17m-high headwall's 636 'soil nails' – some up to 20m long, as well as pre-cast concrete elements, concrete delivery hoppers and small pieces of construction equipment.

"The CKE900G is a very flexible and reliable crane" explained Elliot, "so was exactly what was needed to complete the work on time,



## C1 FACTS & FIGURES

- In July 2017 the Align joint venture was awarded the C1 package of the UK High Speed 2 line (HS2).
- C1 consists of 21.6km of high speed rail infrastructure in a rural environment. This will include a 3.37km viaduct, 16.04km twin-bored tunnel and five vent shafts handling both intervention and tunnel ventilation facilities.
- TBMs arrive in the UK in December 2020 ahead of their launch in 2021
- TBMs named Florence and Cecilia, after Florence Nightingale, the founder of modern nursing who spent many years living in Claydon, Buckinghamshire and pioneering astronomer and astrophysicist, Cecilia Payne-Gaposchkin, who was born in Buckinghamshire
- The 170m-long, 2,000 tonne TBMS, the largest ever used on a UK rail project, will be assembled on-site, and are expected to work 24/7 for more than three years.
- Built by Herrenknecht in south-west Germany, they were transported to the UK in more than 300 separate shipments over the course of two months
- Designed specifically for the mix of chalk and flints



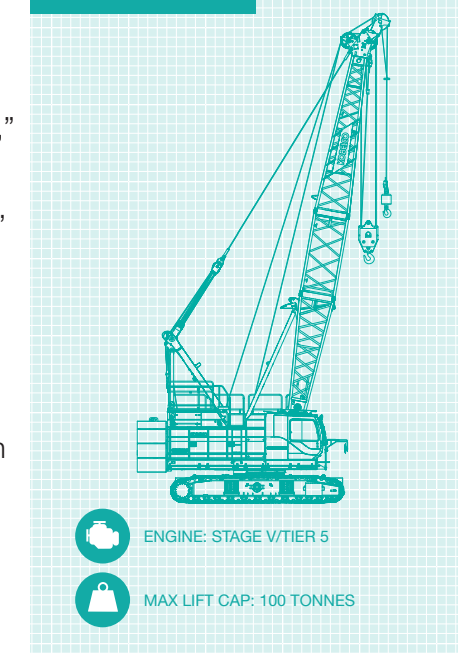
especially as the site was running virtually 24/7. Having bought the machine in 2015, our first Kobelco crawler, we knew it had been maintained and serviced correctly over its 6,500 hours of operation, giving us the confidence that it was more than up to the job."

"This is backed up by Kobelco's own commitment to quality control," added Elliot. "When I first visited the Kobelco crane factory in Japan, that commitment was evident from the start of the manufacturing process to the finish and was one of the things that impressed me most and is one of the main reasons we decided to put our faith in the Kobelco brand."

"The machines may be 'simple' engineering-wise," explains Elliot, "but that engineering is top

class, which gives us all the confidence we need to compete and win work on high-profile project, large-scale infrastructure projects such as HS2."

### CKE900G-3



under the Chilterns, the identical TBMs will dig separate tunnels for north and southbound trains, with Florence launching first and Cecilia following a few weeks later

- Each TBM operates as a self-contained underground factory and will dig and line the tunnels with 56,000 concrete wall segments each, grouting them into place as it moves forward at a speed of 15m/day
- The 112,000 wall segments for the Chiltern tunnel will be made of high-performance fibre-reinforced concrete at a temporary pre-cast factory next to the TBM launch pads at what will be the south portal of the tunnels. This will avoid putting extra HGVs on local roads and ensure a steady supply of segments for the TBMs.
- The TBMs will convert the spoil into slurry which will be pumped back to the Align main site where it will be treated before being used for landscaping on-site
- As one of the most sustainable railways in the world, HS2 will support the UK in transitioning to a net zero carbon economy. It will minimise carbon emissions by delivering low carbon journeys and cut carbon emissions from other forms of transport.



# Rental fleet expansion

**Coventry-based Active Crane Hire has added a new Stage V/Tier 5 Kobelco CKE900G-3 crawler crane to its rental fleet as it continues to update and expand its customer offering.**

The acquisition is part of Active Crane Hire's on-going strategy of providing contractors working on large infrastructure and inner-city projects with the most environmentally friendly and efficient cranes possible, according to Mark Amritt, Business Development Manager, Active Crane Hire.

"With an increasing volume of shaft work throughout the UK, and a significant demand for newer, more energy efficient crawler cranes, our investment in the state-of-the-art CKE900G-3 is one that will repay itself time and again, especially on larger projects, such as HS2, where contracts can last one year or more," explained Mark.

The new, 100 tonne capacity CKE900G-3, the second Kobelco crawler to be added to Active's fleet, not only boasts a Stage V/Tier 5 compliant engine, but was supplied with an impressive array of lifting options – a 57.9m main boom, a 50 tonne, auxiliary three sheave, a 35-tonne, auxiliary one sheave and an 11-tonne ball hook.

"The experience gained working with our 100-tonne capacity, Stage IV/Tier 4 Final CKE900G-2 at Heathwall on the Thames Tideway for sister company

Active Tunnelling, constructing ventilation and access shafts, meant we had confidence in the lifting abilities and environmental qualities of the CKE900G-3," added Mark. "Fitted with a 30.5m boom, the CKE900G-3 was used to lift piling rebar, concrete hoppers, construction equipment, and precast concrete elements of between 18 and 35 tonnes to depths of 50m."

The new CKE900G-3's impressive 57.9m main boom allows for an even greater lifting radius for locations with restricted site access. Coupled with a 50 tonne, auxiliary three sheave, 35-tonne, auxiliary one sheave and an 11-tonne ball hook, as well as the ability to configure the CKE900G-3 for less than 100 tonne, if ground bearing pressure requires, means Active's customers can undertake a wider variety of lifting operations.

But Active's new CKE900G-3 doesn't just benefit from a Stage V/Tier 5 compliant engine and extra lifting options, it's also fitted with Kobelco's KCross, which allows remote monitoring of the crane alongside daily, weekly, and monthly operational reports to help plan service and maintenance, and G-Mode, which includes

the G-winch for higher spooling speeds without raising the engine speed, the G-Engine, which reduces fuel consumption by limiting maximum engine speed with no loss of winch speed, and an Auto Idle Stop function (AIS) that stops the engine automatically when the crane is not lifting.

"As we know cranes can idle for several hours a day when not lifting, but now, thanks to its G Mode stop/start technology the environmental credentials of the CKE900G-3 are second to none," added Mark. "Customers hiring the CKE900G-3 know it builds a great case for your environmental credentials, quality management and CO2 emissions."

Besides its green credentials and impressive lifting ability, Mark also cites Kobelco Cranes's reliability, state-of-the-art telematics, and after-sales support as key factors in deciding to purchase the CKE900G-3.

"Kobelco's engineering, back-up service, KCROSS, G-Mode and Stage V/Tier 5 engine," added Mark, "all add up to an impressive package, one we and our customers can trust in to deliver the goods!"





# Star gazers

Starring role for Kobelco CKE800Gs ahead of 'first of its kind' concrete pour during construction of First Light cultural centre at Jodrell Bank Observatory



Two 80-tonne capacity Kobelco CKE800G crawler cranes, on hire from Q Crane & Plant Hire, have played a starring role in the construction of the new, £20.5 million First Light cultural centre at the UK's Jodrell Bank Observatory in Cheshire.

Once fully complete the Hassell Studio-designed First Light Pavilion, the project's centrepiece, will house an exhibition gallery, education areas, projection space, and cafe situated within the gardens at Jodrell Bank Discovery Centre.

Ahead of completion, construction of the Pavilion's dome required 381m<sup>3</sup> of concrete, poured into a mould spanning 50m to create the single-structure roof. The continuous concrete pour, the first of its kind in over 25 years, according to Ryan Southern, Project Manager, Kier Construction, took 10 hours and 15 minutes to complete, and required 55 lorries and three concrete pumps to deliver the concrete, alongside 59 covid-compliant operatives.

Working for Kier Construction, the first CKE800G arrived on site in April last year, with the second arriving in May. Initial work





jib on 10° offset, to get extra reach as the building's domed roof came up out of the ground.

"We added the fly jib," said Andy, "because, once we started to lift the formwork into place and the scaffolding was added, it was harder to reach the middle of the 50m-wide dome structure, especially with the crane being moved further away to allow for clearance. Maximum reach at this point was 30-32m, while maximum weight was 4.2 tonnes.

"For this type of work," added Andy, "Kobelco cranes are amongst the best lifters in their category and are very robust. They're also easy to work on if problems occur – there were zero mechanical problems on this job - and the cranes worked throughout the project without a hitch. We and our customer were extremely happy with their performance!"

With the work completed at the end of last year, the cranes were transported to jobs in Manchester and Liverpool, respectively.



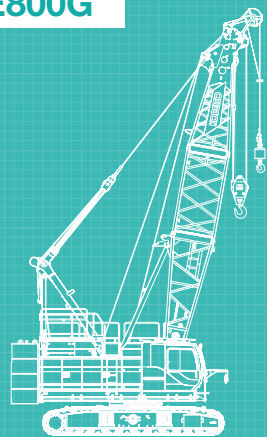
included site preparation and construction of the Pavilion's concrete podium – lifting piling rebar and concrete hoppers – before helping install the formwork needed for the historic pour.

Access to the site was planned "well in advance" to accommodate the specialist five-axle low-loader required to bring in the base units, according to Andy Pearson, Head of Operations, Q Crane & Plant Hire, with the company using its own in-house transport for the jib sections.

Working 10 hours per day, Monday to Friday, the two CKE800Gs were chosen for their weight and radius capabilities, according to Andy, with the length of hire (six months) set against a standard mobile crane making "a significant cost saving to the customer.

Both CKE800Gs were initially supplied with a 36.6m main jib, alongside a 360° safety camera system and an aircraft warning light (the later retrofitted by Q Crane & Plant Hire to both cranes), with one crane adding an 18m fly

#### CKE800G



ENGINE: STAGE V/TIER 5



MAX LIFT CAP: 80 TONNES



# Four of a kind

## Delden Crane Hire continues its fleet investment with the delivery of the first of four Kobelco CKE900G-3 crawler cranes.

The first of the four new 100-tonne capacity, Tier 5/ Stage V compliant CKE90G-3 crawlers has been fitted with a specialist tractor-type, flat shoe undercarriage and comes with a variety of lifting options.

Speaking about the acquisition, Sam Bladon, Delden Cranes's Hire Manager, said: "The CKE900G-3 has proven to be an extremely versatile machine with a wide range of capabilities. It's great to see further investment in the latest emissions compliant machinery, which will further strengthen our position within the crane hire Industry."

The crane will shortly be heading out onto its first project, before the arrival of next machine later this month. "This order for another

four 100t capacity CKE900G-3 Tier 5/Stage V cranes continues the excellent long-standing relationship between Delden and Kobelco. We hope these cranes prove as successful as the cranes previously delivered," said Mark Evans, Ireland & Africa Sales Manager, Kobelco Construction Machinery Europe (UK).

Delden's new CKE900G-3s don't just benefit from Stage V/ Tier 5 compliant engines and extra lifting options, they're also fitted with Kobelco's K-CROSS,



Delden Crane Hire's CKE900G-2 has been working for Highways England on the £30 million (€35 million) A69 Bridge End junction scheme, which aims to reduce congestion and improve journey times and safety for all users. The scheme includes a new stretch of the A69 under the current roundabout and constructing two new bridges (shown) across the A69 to form the junction.

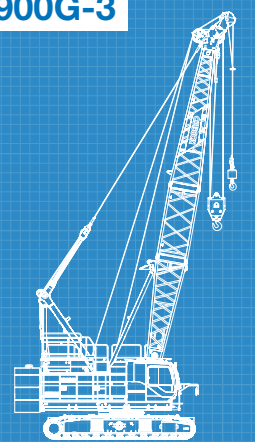


which allows remote monitoring of the crane alongside daily, weekly, and monthly operational reports to help plan service and maintenance, and G-Mode, which includes the G-winch for higher spooling speeds without raising the engine speed, the G-Engine, which reduces fuel consumption by limiting maximum engine speed with no loss of winch speed, and an Auto Idle Stop function (AIS) that stops the engine automatically when the crane is not lifting.

Commenting on the purchase, Managing Director of Delden Cranes, Sean Nyland said: “Our investment in Kobelco Cranes demonstrates our commitment to providing our customers with the latest and most modern machines available.

“Besides which, these newest CKE900G-3s have been purchased specifically because of their environmental credentials, improving quality and service to our customers, and with a variety of configurations aimed specifically at supporting the environmental requirements of working on High Speed 2 and other significant infrastructure projects.”

#### CKE900G-3



ENGINE: STAGE V/TIER 5



MAX LIFT CAP: 100 TONNES



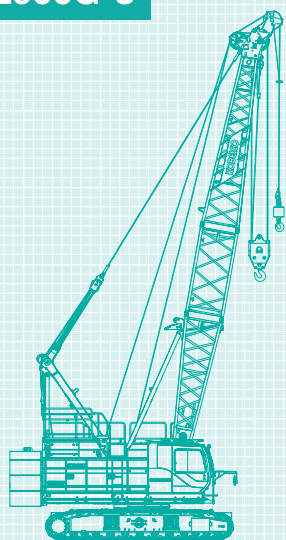
# Second CKE900G-3 for Anderson

**Anderson Crawler Crane Hire has now taken delivery of its second brand new Kobelco CKE900G-3 crawler crane this year, as it continues its rental fleet expansion**

Following delivery of the first 100-tonne capacity CKE900G-3 in March this year, Anderson Crawler Crane Hire has taken delivery of its second, new Stage V/Tier 5 compliant CKE900G-3, taking the number of G models in its rental fleet to three.

Having bought its first Kobelco in 2014, a used, 80 tonne capacity CKE800, the company has been steadily expanding its fleet with new cranes to comply with the latest environmental regulations and the demand from contractors for the latest models, according to Managing Director, Martyn Anderson.

## CKE900G-3



ENGINE: STAGE V/TIER 5



MAX LIFT CAP: 100 TONNES

“Our previous second-hand Kobelco’s have proven to be remarkably reliable, but now the lifting industry must meet the challenge of low emission requirements for the environment and the continued focus on the operator’s health, safety and well-being,” explained Martyn. “To meet that challenge, after 36 years of purchasing older, second-hand crawler cranes, refurbished to Anderson’s high standards, for hire to the Major Contractor’s Group, we are investing heavily in the new, Stage V/Tier 5 compliant, 100 tonne capacity Kobelco CKE900G-3 crawlers.”

Besides a new Stage V/Tier 5 compliant engine as standard, Anderson’s new CKE900G-3 lattice boom crawler was supplied with 54.9m main boom, rooster, 15.3m fly jib, aircraft warning light and green handrails for easy identification and increased operator safety.

“Rigged on a 42.7m main boom and 15.3m fly jib with a 30° off-set, gives the CKE900G the ability to lift over structures where the main boom cannot reach, giving an impressive 2.4 tonne lift at a 48m radius!” said Martyn.

But the advantages of the CKE900G-3 go beyond its impressive lifting abilities, according to Martyn. “The CKE900G-3 is also the largest capacity crawler crane

that will fit on a low-loader without removing the tracks or ballast for most haulage routes in the UK, while two main boom inserts can also fit side by side on the jib lorry, so reducing the number of lorries needed, making transport cost effective.”

Following delivery to Anderson’s yard in Flaxton, near York, where the CKE900G-3 was assembled and tested under the supervision of Kobelco’s engineering team and then put through its paces with a series of test lifts overseen by Sam Clarke, one of Kobelco’s senior service engineers, the new machine was sent to its first job.

“Our first, new CKE900G-3 went straight to work in the North West as soon as the testing was complete,” says Martyn Anderson, “and following assembly and testing, this second CKE900G-3 will go straight to a new, three-month contract this week, where it will be working in the North East for a major civils contractor performing typical lifting duties, including lifting re-bar, shutters and concrete with a three metre skip.”

Besides the CKE900G-3’s environmental credentials and lifting abilities, Martyn has also been impressed with Kobelco’s engineering and aftersales service. “Combined with the highly skilled and professional technical support we’ve received from Mark Evans and the team, the Kobelco CKE900G-3 is equipped to impress the hirer and fulfil the high expectations and requirements of the civils sector. It ticks all the boxes for us and our clients!”



Martyn Anderson with his company’s first 100-tonne capacity CKE900G-3, which was delivered in March this year. Below, the Stage V/Tier 5 compliant CKE900G-3 heading out to its first job.

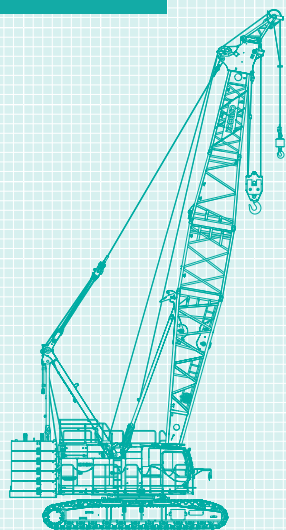




# Safety first

Sub-contractor SB3 takes safety first approach with four CKE1350s at High Speed 2's Old Oak Common

## CKE1350G-2



ENGINE: STAGE VI/TIER 4 FINAL



MAX LIFT CAP: 150 TONNES

The SB3 joint venture (Soletanche Bachy, Balfour Beatty Ground Engineering), working for the Balfour Beatty, Vinci, Systra (BBVS) joint venture at the £1 billion Old Oak Common (OOC) main station, is using four Stage V/Tier 4 Final Kobelco CKE1350G-2 crawler cranes during construction of the station box's diaphragm walls and associated structures.

Two of the CKE1350G-2s are new, having been delivered to Balfour Beatty in January specifically to work on construction of HS2's OOC railway station. All four machines arrived on site in April and May, and will be working there for approximately 12 months.

"Two of the four machines are playing a supporting role during construction of the station box's 1.8km-long, 25m high diaphragm walls," said Nick Moon, Business Manager - Crawler Cranes, Tower Cranes & Piling Equipment, Balfour Beatty Plant & Fleet Services, "while the other two are being utilised for general lifting duties, including lifting cages and piling rebar."

The two newest CKE1350G-2s, both of which were supplied with a 61m main boom and 18.3m fly jib, were retrofitted with Groeneveld's automatic lube system, which automatically lubricates all bearings, gears, pins and bushes, alongside ROPs/FOPs guards to doors and windscreens, during commissioning.

For added safety during operation on what Nick describes as "a tight site", BBVS fitted both with an Orlaco camera system with winch view and load zoom capabilities, alongside its own 360° view camera system, while Kobelco also fitted cab guards from Cab Care to protect the machine during transportation.





A new warehouse under construction in Japan will help streamline distribution of spare and replacement parts to UK customers

# Frictionless supply chain

**Kobelco Cranes Europe's crawler crane spare parts supply chain is secured for UK and Ireland customers following departure from EU thanks to trade deals with Japan and Singapore**



Clive Harber, UK spare parts administrator, Kobelco Construction Machinery Europe (UK)



Hydraulic hoses waiting to be packaged and dispatched



Wire rope ready for dispatch to customers in the UK

The departure of the United Kingdom from the European Union (EU) on 1st January 2021 has had no adverse effects on the ability of Kobelco Construction Machinery Europe (UK) to supply customers with the crawler crane spare parts they need to help successfully deliver the country's important infrastructure projects, including HighSpeed 2 and the Thames Tideway.

"In the UK deliveries of spare parts remain next day, while customers in Ireland shouldn't have to wait more than three days," said UK spare parts administrator, Clive Harber. "Kobelco Construction Machinery Europe (UK)'s distribution centre in East Grinstead is open, with over 6,000 items across 1,946 product lines available, with a value of approximately £500,000.

"We have a large stock of the most popular items requested – air, oil, hydraulic and fuel filters, fan belts, water pumps, alternators, air conditioning filters – all available via

email, or by telephone, if required, and this is being added to daily," added Harber.

As such, KCME (UK) continues to offer customers spare and replacement parts for the CKE-G Series, BME-G Series, CKE1800, as well as the CKS Series, BMS Series, 7000S Series, 7055, SL S-series, and the SL G-series.

The continuation of the frictionless supply of parts enjoyed by KCME (UK) has, in part, been made possible by the signing of two separate trade agreements with Japan and Singapore at the end of last year.

The UK – Japan Comprehensive Economic Partnership Agreement (CEPA) was signed by International Trade Secretary Liz Truss and Japan's Foreign Minister Motegi Toshimitsu in Tokyo on 23rd October, while the free trade agreement with Singapore, signed on 10th December was modelled on the existing agreement between the EU and Singapore, and

provides for the elimination of tariffs, opening reciprocal access to markets for services and reducing non-tariff barriers on vehicles and spare parts.

"The trade deals signed by the UK Government at the end of last year safeguard the supply of parts from Japan and the trans-shipment hub of Singapore. As such, we have seen no adverse effects on our ability to meet customer demands for spare parts now, or during the first quarter of 2021 and beyond," Mark Evans, marketing manager, Kobelco Construction Machinery Europe (UK) – Crane Division. "Our customers can expect the same levels of service they have always enjoyed, with the added bonus of a secure and frictionless supply of spare parts for the foreseeable future."

Customers looking to order spare parts should contact UK spare parts administrator, Clive Harber on +44 (0)1342 301122, or email [clive.harber@kobelco.com](mailto:clive.harber@kobelco.com)



# STAY IN TOUCH...



Follow Kobelco Cranes Europe on Instagram - @kobelcocraneseurope - and tag us with #kobelco #KCME #kobelcocranes for your chance to win exclusive Kobelco goodies from our Fan Shop every month!



Want to keep up-to-date with our latest product launches, company news, exclusive events, pictures and video? Then follow us on LinkedIn and stay connected!

PIC RIGHT: This month's Instagram winner from Richard Graham shows a CKE2500-2 during load-testing of the pipe-laying barge Fortuna's davits during its mobilisation in Mukran, the Baltic Sea.



KOBELCO

NEW

## Quality used crane finder service



We have a wide selection of used cranes available.  
We are also happy to facilitate the sale of any used machines on your behalf

KOBELCO



SK210D  
car  
dismantler  
scale  
model



NEW  
Gift  
vouchers



If you have a used crane for sale, or are looking to buy a used crane contact:

Alex Burt, Used Crane Sales Representative,  
Kobelco Construction Machinery Europe (UK) - Crane Division.

T: +44 (0) 1342 301122 M: +44 (0) 7471 994460

Unit 9, The Felbridge Centre, East Grinstead, West Sussex, RH19 1XP

alex.burt@kobelco.com kobelco-europe.com/products-cranes/

## Visit the Kobelco Fanshop today!

www.kobelcofanshop.com





# KOBELCO

## KOBELCO CONSTRUCTION MACHINERY EUROPE B.V. (The Netherlands)

Veluwezoom 15, 1327 AE Almere, The  
Netherlands  
T: +31-36-549-5510

### European countries & Israel



**Sales: Jos Verhulst**  
M: +31-(0)6-5346-8439  
E: jos.verhulst@kobelco.com

### European countries & Israel



**Service & Technical support:**  
**Rene Kraakman**  
M: +31-(0)6-5335-3552  
E: rene.kraakman@kobelco.com

### European countries & Israel



**Spare parts: Jo-Anne Lehmann**  
T: +31-(0)36-549-5510  
E: joanne.lehmann@kobelco.com

### European countries & Israel



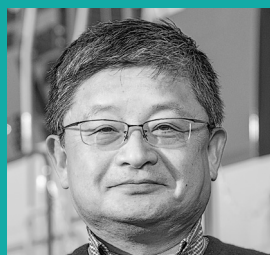
**Service & Technical Support:**  
**Marcel Thole**  
M: +31-6-2123-4180  
E: marcel.thole@kobelco.com

### Russia and Turkey



**General Coordinator  
Sales & Marketing:**  
**Takashi Yanagisawa**  
T: +31-(0)36-549-5510  
E: yanagisawa.takashi@kobelco.com

## KOBELCO CONSTRUCTION TECHNICAL TEAM



**Manager Engineering Dept:**  
**Hiroyuki Nishikawa**  
T: +31-(0)36-549-5510  
E: nishikawa.hiroyuki1@kobelco.com

## UK, Ireland & Africa KOBELCO CONSTRUCTION MACHINERY EUROPE B.V. (UK)

Unit 9, The Felbridge Centre, East  
Grinstead, West Sussex,  
RH19 1XP, UK  
T: +44-1342-301122



**Sales: Mark Evans**  
M: +44-(0)-7880-381310  
E: mark.evans@kobelco.com

### UK, Ireland & Africa



**Sales: Alex Burt**  
M: +44-(0)-7471-994460  
E: alex.burt@kobelco.com

### UK, Ireland & Africa



**Service & Technical support:**  
**James McCulley**  
M: +44-(0)-7795-552182  
E: james.mcculley@kobelco.com

### UK, Ireland & Africa



**Service & Technical support:**  
**Sam Clarke**  
M: +44-(0)-7879-554686  
E: sam.clarke@kobelco.com

### UK, Ireland & Africa



**Spare parts: Clive Harber**  
T: +44-(0)-1342-301122  
E: clive.harber@kobelco.com

## KOBELCO CONSTRUCTION MACHINERY EUROPE B.V. (Germany) Germany, Austria and Switzerland

## KOBELCO CONSTRUCTION MACHINERY CO., LTD.



**Marketing & Product  
Development: Detlef Brueckner**  
M: +49 170 4590515  
E: detlef.brueckner@kobelco.com