

KOBELCO

Cranes Europe

Strength through experience since 1930

Issue 3/Volume1
Winter 2020



SPECIAL REPORT
New "one-stop-shop"
second-hand crane
finder service launched

UK FOCUS:
Bennetts Cranes
Cementation Skanska
Red7Marine...

CRANE NEWS:
UK's first Stage V
compliant CKE900G-3
for Bennetts Cranes

STOCK CRANES FOR SALE



Brand new crawler cranes available from stock, from 80-250 tonne lifting capacity

Contact Mark Evans, Kobelco Construction Machinery Europe (UK) - Crane Division.

T: +44 (0) 1342 301122 M: +44 (0) 7880 381310

Unit 9, The Felbridge Centre, East Grinstead, West Sussex, RH19 1XP

mark.evans@kobelco.com kobelco-europe.com/products-cranes/

Hello and welcome to the latest edition of our customer magazine.

This issue is packed with stories from across the UK, including a look at a new CKE300-G at work in Dublin, a CKE800G on piling duties in London and our new, used crane "one stop shop", alongside reports that showcase the diversity of work undertaken by our crawler cranes across the region.

We hope you enjoy this issue and don't forget, we'd always love to hear your feedback, so send us your ideas & pictures for a chance to be featured in the next issue!



Masakazu Usami
Division Director Cranes
(Kobelco Construction Machinery Europe)

CONTENTS

04 Bennetts Cranes / UK
UK's first Stage V compliant CKE900G-3 for specialist tower crane rental & sales company



06 FK Lowry Plant / UK
CKE900G-3 goes to work at prestigious Dublin 2 mixed-use development in heart of the city



08 Photo spotlight / UK
Red7Marine's CKE300G for Port of London Authority's Barrier Gardens pier



10 Cementation Skanska / UK
CKE800Gs provide piling assistance at a build-to-rent development in London



12 Williams Shipping / UK
Instant success for Kobelco Cranes' new "one-stop-shop" second-hand crane finder service



14 A life in cranes
Kobelco Cranes' Service & Technical support manager, René Kraakman reflects on a life "in cranes"



Cover: Workers at J. Murphy & Sons stay safe & socially distanced working with GH Johnson's Kobelco CKE1100

KOBELCO
CONSTRUCTION
MACHINERY EUROPE
B.V. (UK)
Unit 9, The Felbridge
Centre, East
Grinstead, West Sussex
RH19 1XP, UK
Tel: +44-1342-301122

KOBELCO
CONSTRUCTION
MACHINERY EUROPE
B.V. (The Netherlands)
Veluwezoom 15, 1327 AE
Almere, The Netherlands
Tel: +31-36-549-5510

KOBELCO
CONSTRUCTION
MACHINERY EUROPE
B.V. (Germany)
Germany, Austria and
Switzerland
Tel: +49 (0)172 7946087

DISTRIBUTORS
Russian Federation
FKR Machinery

105187, Russia, Moscow,
Room 1, Office 4,
Mironovskaya Street
Tel: +7-495-981-4545

Republic of Turkey
Das Otomotiv ve
Jeneratör Tic. A.Ş
Gardenya Plaza 5, Kat: 2
34758 Ataşehir - İstanbul
- TÜRKİYE

Tel: + (90) 216 456 57 05

People's Democratic
Republic of Algeria
Manyi Machinery
Centre des affaires AL-
Qods,
bureau 08-07 niveau 04
Chéraga Alger - Algeria.
Tel: +213 (0) 21-343-173

HEAD OFFICE - JAPAN
KOBELCO
CONSTRUCTION
MACHINERY CO., LTD
Tokyo, Japan
Tel: +81-(0)3-5789-2121

First Stage V CKE900G-3 delivered

The UK's first Stage V compliant Kobelco CKE900G-3 starts work at specialist tower crane rental & sales company Bennetts Cranes.

Bennetts Cranes operates three tower crane storage and rental yards in Sharpness and already uses two CKE900G-2s to move and assemble its fleet of luffing/saddle jib and self-erecting tower cranes.

Like its predecessors, the new CKE900G-3 will also be used to move the heavy tower crane parts – towers, booms, counterweights,

and cabs - around the yard and in and out of the storage bays.

Key to Bennetts Cranes' decision to buy the new CKE900G-3 was its Stage V/Tier 5 engine rating, according to Edward Seager, Managing Director, Bennetts Cranes: "We are delighted to have taken delivery of and to be using our third Kobelco CKE900G crawler crane. This latest model is

Stage V/Tier 5 emissions compliant and this is the first Kobelco in the UK to achieve this standard.

"As well as meeting the highest environmental standards the Kobelco's lattice jib enables us to lift heavy weights at the full 40m radius. We configure the crane for this and, together with the speed of movement, it means we can store our tower cranes in the

optimum manner and still load and unload them from transport with ease."

NEW ENGINE

The "new clean energy system" engines use a DPF (Diesel Particulate Filter) to reduce particulate matter (PM) and an SCR (Selective Catalytic Reduction) to reduce NOx (nitrogen oxides), both of which are also kept to a minimum using negative ions.

SCR is an exhaust gas after-treatment system. It converts NOx, which are contained in the diesel engine exhaust gas, with the aid of a catalyst (AdBlue), into harmless diatomic nitrogen and water. With the combination of a DPF, which is perfect for reducing PM, the exhaust gas from the engine is much cleaner and eco-friendlier.

The new "G Engine" system also keeps the engine running within fuel-efficient parameters by limiting maximum engine speed. While engine speed is reduced, pump capacity is controlled to maintain maximum winch speed for running

or lifting. Using this function reduces fuel consumption by 10% when compared to operations on a comparable crane.

OTHER FEATURES

Besides the new Stage V/Tier 5 compliant engine, Bennetts Cranes' new CKE900G-3 lattice boom crawler boasts a maximum lifting capacity of 100 tonnes at 3.6 m (90 tonnes at 3.9 m) and features Kobelco's KCross remote operation management system, which is designed to help maximise machine efficiency and uptime.

Like all G Series cranes it is also fitted with its 'G-Winch', which provides high operating speeds without increasing engine revs, together with the AIS (Auto Idle Stop) function. Maximum line pull is 208 kN (21.2 tf).

Commenting on the acquisition, Mark Evans, Kobelco Construction Machinery Europe - Crane Division, sales & operations manager (KCME), said: "Kobelco and Bennetts have developed an excellent relationship over the last

few years. Bennetts' attention to detail and compliance with the highest environmental and health and safety standards, and regulations, means even its loading cranes are 'on point' when it comes to maintaining excellent customer service and support of its customers. I look forward to maintaining and strengthening this relationship."



Following delivery to Bennetts Cranes, the CKE900G-3 was assembled and tested under the supervision of Kobelco's engineering team and then put through its paces with a series of test lifts overseen by Sam Clarke, one of Kobelco's senior service engineers.



CKE900G-3

ENGINE: STAGE V/TIER 5

MAX LIFT CAP: 100 TONNES



CKE900G-3 for Dublin 2

Stage V compliant Kobelco CKE900G-3 crawler crane goes straight to work for FK Lowry Plant at prestigious Dublin 2 development

FKL Plant has mobilised its new Kobelco CKE900G-3 crawler crane during construction of a two-storey basement for the €350 million (£311 million), 42,000m² Wilton Park development at Dublin 2, Ireland.

The development, which will create a new city quarter of office, retail, and restaurant space, is being constructed by main contractor John Sisk & Son on behalf of Dublin-based real estate investment and management company IPUT.

The Stage V/Tier 5 compliant CKE900G-3, which has a maximum lifting capacity of 100 tonnes at 3.6m, or 90 tonnes at 3.9m, was supplied with the standard 51.8m-long main boom and was delivered to FKLP's Oldham, Manchester depot in August, before being transported to Dublin.

Following assembly and commissioning under the direction of Kobelco's UK service manager, James McCulley, alongside FKLP's

own engineering team, the CKE900G-3 was immediately put to work supporting the company's Soilmec SR-95 and SR-75 hydraulic drilling rigs during construction of the secant bored pile basement wall consisting of 15 to 18m-long rotary bored piles.

"The site is a relatively compact one," explains Mark McKeown, business development manager, FKL Plant, "and the 42.7m mast on the compact, but highly manoeuvrable CKE900G-3 meant it could easily be placed and have everything within easy reach. While we've only just started work, we're delighted with the crane's performance to date and look forward to continuing to use it in the years to come."

Working at a maximum radius of 38m, the CKE900G-3 is lifting a variety of material on site, including the 18m-long, 2-tonne reinforcement cages for the 15 to 18m-deep piles, alongside small pieces of site equipment.

FKL has a 20 year-long relationship with Kobelco Cranes, having bought its first machine, a 70-tonne capacity CKE700 in the early 2000s. Over the intervening years it has also used another two CKE700s, a 135-tonne capacity CKE1350, and two, 180-tonne capacity CKE1800s. It's latest CKE900G-3 is scheduled to finish at Dublin 2 in December before being transported to Aberdeen to start work on another "prestigious" project, according to Pat McKay, general plant manager, FKL Plant.

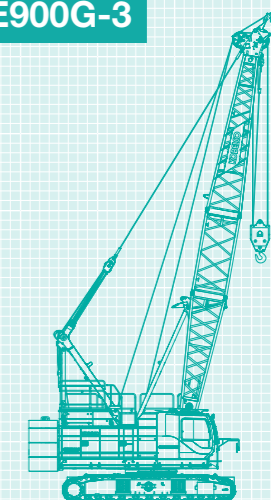
"Kobelco cranes have a great build quality and extremely low running costs," said McKay, "while our new



CKE900G-3 is also Stage V/Tier 5 compliant, which means we can work on urban sites, such as Dublin 2, while maintaining the highest environmental standards.

"Besides which, I've had the pleasure of dealing with Mark and the Kobelco team for the past eight years and have always found them to be consummate professionals in everything that they do, and we look forward to continuing our relationship with them and Kobelco for many years to come."

CKE900G-3



ENGINE: STAGE V/TIER 5

MAX LIFT CAP: 100 TONNES



PHOTO SPOTLIGHT

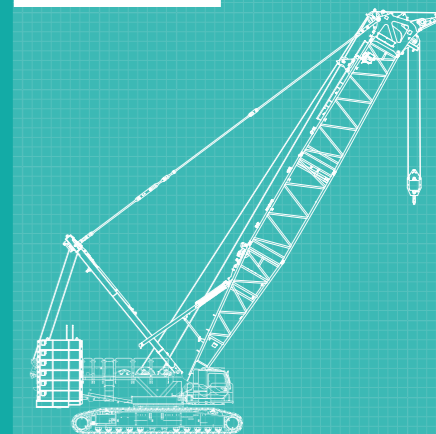
'Flash, bang, wallop, what a picture, What a picture, what a photograph!'

This amazing image landed on our desk courtesy of Red7Marine and shows its 250-tonne Haven Seariser 4 jack-up barge and Kobelco CKE3000G working for the Port of London Authority to support the Barrier Gardens pier extension in Woolwich, which aims to improve environmental performance, reduce noise generation and enhance crew safety, earlier this year in front of the iconic towers London's Canary Wharf.

If you have an image you'd like to share with us, either tag us @kobelcocraneseurope on Instagram, or email cranesphoto-eu@kobelco.com for a chance to be featured in the next issue, or on our Instagram feed.

 @kobelcocraneseurope

CKE3000G



 STAGE IV/TIER 4 FINAL

 MAX LIFT CAP: 300 TONNES

CKE800G duo on piling duties



Two CKE800G crawler cranes are providing piling assistance at a build-to-rent development in London

Two Kobelco CKE800G crawler cranes, working for Cementation Skanska – Cranes, part of Cementation Skanska's construction equipment fleet, are providing piling attendance at residential property developer Telford Homes' design and build contract with Henderson Park and Greystar Real Estate Partners, to deliver 894 build-to-rent homes across two blocks at Nine Elms Park, Battersea.

The development, part of the Battersea Nine Elms regeneration area, is a former Royal Mail depot and will create approximately 60,000m² of residential space across two distinct buildings alongside retail and community space. The first homes are expected to be delivered in 2022 with full completion in 2024.

Cementation's contract, for the design and construction of 306nr bearing piles across the two

blocks, saw the two cranes arrive on site in September 2019 in an out-of-hours delivery on low loaders. Tracks and ballast weight were left on during transport, with the jib arriving on a separate flat-bed truck.

Once unloaded, the 90-tonne capacity CKE800Gs, which were bought by Cementation in 2014 and 2015 respectively, were then assembled, a process of approximately five hours, by the company's in-house plant fitters.

With health and safety paramount at all times, Cementation supplemented the CKE800G's on-board camera system, which provides a 360 degree view around the machine, with its own on-site safety camera system, as well as a hi-vis physical barrier around the crane to prevent anyone entering the slew zone (see photo).

Due to finish work at the end of this

month (March), the CKE800Gs are handling plant and materials for the piling works, with the heaviest item to be lifted weighing 14.8 tonnes at a maximum distance of 30m.

To carrying out the work, both cranes have been rigged with a main boom only - main 32 tonne hook block and single line - with the maximum placement lift height - for the 15m tall bentonite silos that are lifted into the vertical from a horizontal position - being 18m.

CKE800G



ENGINE: STAGE V/TIER 5

MAX LIFT CAP: 80 TONNES

'One-stop-shop' proves instant success



New 'one-stop-shop' used crane finder service enjoys first success with delivery of 'new' CKE700-1F to Williams Shipping.

Delivered to marine and logistics company Williams Shipping's dock in Pembroke earlier this year, the CKE700-1F is now working on one of its barges performing lifting duties - boarding ship stores, engine parts - and providing civil engineering support across Milford Haven Waterway.

The new service aims to connect Kobelco Cranes' customers who are looking to buy or sell a crane, with potential buyers and sellers across the EAME region.

Having been alerted by Williams Shipping that it was looking for a 'new', 70 to 80 tonne capacity crane to replace a 50 tonne capacity unit in its fleet, Alex Burt, Kobelco Cranes' used crane sales representative, contacted an existing Kobelco Cranes client who had a number of quality, used units for sale, including several CKE700-1Fs.

"Williams Shipping has been a valuable customer for a number of years," explains Alex, "so we were delighted to be approached to assist with its fleet replacement at Pembroke. From the outline brief, we were able to recommend an immediately available CKE700-1F to add extra lifting capacity and radius to meet its operational requirements."

Once seller and buyer were contacted and introduced, Alex arranged inspections for the



2009 model CKE700-1F (supplied with a 48.8m main boom, auxiliary sheave and 12.2m fly jib) and the 50-tonne capacity crane Williams Shipping was selling, alongside replacement parts - top rollers, solenoids, etc - and help negotiating the final price.

"The excellent relationship we have with our extensive network of customers throughout the EAME region," continues Alex, "allowed us to provide a full aftersales history and added due diligence for both parties, with just three months needed from initial contact and inspection by one of our engineers, to delivery with replacement parts agreed and delivered the following month.

"And, as an added bonus," says Alex, "we were also able to facilitate the sale of Williams Shipping's 50 tonne capacity unit to a crane rental company, and another Kobelco Cranes customer, in Ireland's NCLS Crane & Lifting Services."

Adding the CKE700-1F to its fleet, according to Philip Williams,

Managing Director - Marine, Williams Shipping, has given it the opportunity to undertake heavier lifts, increase its scope of work, and find new rental opportunities, while sourcing it from a reputable source meant peace of mind throughout the process.

"Despite the restrictions the Covid pandemic placed on all concerned," explains Philip, "being able to deal directly with the crane manufacturer, rather than a dealer or agent, gave us the extra peace-of-mind and transparency we needed to conclude a successful deal, while any teething problems we had following delivery were dealt with quickly by Alex and the team at Kobelco.

"With that in mind, I'd have no hesitation in using Kobelco Cranes' used crane finder service again, or recommending it, especially given the incredibly high levels of support and service we received from all concerned."

Visit kobelco-europe.com/usedmachinery for more about our used crane finder service.

A life in cranes



After 45 years in cranes, René Kraakman, Kobelco Cranes' service & technical support manager, says the best piece of advice he's been given, and that he's made his motto, is: do as you promise, especially the small things."

Doing the small things (as well as the big ones) means René's met and made friends with the Kobelco crane family worldwide, "What we've achieved with such a relatively small group of people is amazing: we've been able to support our customers in so many ways, and we continue to do so," says René.

Working together has been the hallmark of his career since leaving the army in 1975 to work for Louis Reyners, where he worked on a range of equipment, from excavators to wheel loaders, and, of course, Kobelco Cranes. "I learnt a huge amount from everyone there, especially about the mechanics of those machines. It was a great foundation for my career, and I'd recommend anyone who wants to work in the crane industry gets their hands dirty first."

Learning from others and passing that knowledge on have also been key to shaping his own philosophy. "I try to be open for input and knowledge, plus I'm always up to date with the latest technical developments. Passing that knowledge on is key to making the next generation better than this one!" That willingness to learn starts at home: "The culture of Kobelco is rooted in Japan," explains René, "and what I learned from Japanese culture and workmanship was to recognize the differences and try to learn from each other." And that philosophy extends to working with customers too. "Huisman and Van't Hek

constantly push the envelope in terms of what's possible. They innovate and are happy sharing knowledge and skills," says René.

Personal relationships have also left their mark, including with Andrew Brown, legendary sales manager for Kobelco Cranes in the UK from 2000 until 2013. "I really appreciated Andrew's dedication to Kobelco. We enjoyed some interesting business trips, particularly in the Ukraine. He was the sort of person who never walked away when things didn't work out as expected and I try to do the same."

René's first trip abroad, with Reyners, was as part of a Dutch government development project for an electric power plant in Mozambique delivering a P&H Kobelco 220-TC truck-mounted crane with mechanical outriggers and fly jib. "It was a real education for me personally and professionally. Since then, I've been lucky to travel to some amazing places, from Russia to Madagascar and Japan to Brazil, doing something I really love!"

The chance to travel the world, hasn't always been plain sailing however: "A trip to Yamal, Russia was effected by the weather, with the flight to Vorkuta cancelled, so our client arranged for me to take the train... the journey took 48 hours by train from Moscow, then six hours by car to commission a new CKE1350G."

While he's now working three-days-a-week, René has no plans to retire just yet - "I'm still enjoying myself too much!" - but when it does happen, you'll find him restoring an old Austin Healey - "one of my favourite cars" - or riding his Harley Davidson, but "not into the sunset just yet!"



Delivering a P&H 220-TC to Mozambique



Mammoet Canada & US staff training in Kyoto, 2016



Training on a CKE1800-1F, Algeria, 2006

KOBELCO



Quality used crane finder service



We have a wide selection of used cranes available.
We are also happy to facilitate the sale of any used machines on your behalf



If you have a used crane for sale, or are looking to buy a used crane contact:

**Alex Burt, Used Crane Sales Representative,
Kobelco Construction Machinery Europe (UK) - Crane Division.**

T: +44 (0) 1342 301122 M: +44 (0) 7471 994460

Unit 9, The Felbridge Centre, East Grinstead, West Sussex, RH19 1XP

alex.burt@kobelco.com kobelco-europe.com/products-cranes/

KOBELCO

KOBELCO CONSTRUCTION MACHINERY EUROPE B.V. (The Netherlands)

Veluwezoom 15, 1327 AE Almere, The
Netherlands
T: +31-36-549-5510

European countries & Israel



Sales: Jos Verhulst
M: +31-(0)6-5346-8439
E: jos.verhulst@kobelco.com

European countries & Israel



Service & Technical support:
Rene Kraakman
M: +31-(0)6-5335-3552
E: rene.kraakman@kobelco.com

European countries & Israel



Spare parts: Jo-Anne Lehmann
T: +31-(0)36-549-5510
E: joanne.lehmann@kobelco.com

European countries & Israel



Service & Technical Support:
Marcel Thole
M: +31-6-2123-4180
E: marcel.thole@kobelco.com

Russia and Turkey



**General Coordinator
Sales & Marketing:**
Takashi Yanagisawa
T: +31-(0)36-549-5510
E: yanagisawa.takashi@kobelco.com

KOBELCO CONSTRUCTION TECHNICAL TEAM



Manager Engineering Dept:
Hiroyuki Nishikawa
T: +31-(0)36-549-5510
E: nishikawa.hiroyuki1@kobelco.com

European countries & Israel



**Senior Application/Design
Engineer: Jan Sytstra**
T: +31-(0)36-549-5510
E: jan.sytstra@kobelco.com

UK, Ireland & Africa KOBELCO CONSTRUCTION MACHINERY EUROPE B.V. (UK)

Unit 9, The Felbridge Centre, East
Grinstead, West Sussex,
RH19 1XP, UK
T: +44-1342-301122



Sales: Mark Evans
M: +44-(0)-7880-381310
E: mark.evans@kobelco.com

UK, Ireland & Africa



Sales: Alex Burt
M: +44-(0)-7471-994460
E: alex.burt@kobelco.com

UK, Ireland & Africa



Service & Technical support:
James McCulley
M: +44-(0)-7795-552182
E: james.mcculley@kobelco.com

UK, Ireland & Africa



Service & Technical support:
Sam Clarke
M: +44-(0)-7879-554686
E: sam.clarke@kobelco.com

UK, Ireland & Africa



Spare parts: Clive Harber
T: +44-(0)-1342-301122
E: clive.harber@kobelco.com

KOBELCO CONSTRUCTION MACHINERY EUROPE B.V. (Germany) Germany, Austria and Switzerland



**Business Development &
Sales: Daniel Hohmann**
M: +49 (0)172 7946087
E: daniel.hohmann@kobelco.com

KOBELCO CONSTRUCTION MACHINERY CO., LTD.



**Marketing & Product
Development: Detlef Brueckner**
M: +49 170 4590515
E: detlef.brueckner@kobelco.com