

KOBELCO

Cranes Europe

Strength through experience since 1930

Issue 1/Volume 2
Spring 2022



CRANES:

CKE900G-3
CKE1350G-2
And more...

PROJECTS:

High Speed 2
Silvertown Tunnel
And more...

NEWS:

Stock Crane service
expands...

KOBELCO

STRENGTH THROUGH EXPERIENCE SINCE 1930

KOBELCO G-SERIES

- EU Stage 5 compliant power plant
- Up to 25% fuel consumption thanks to G-mode: G-Engine, G-winch and Auto-Idle-Stop
- Ergonomic, luxurious, spacious cap with joysticks
- Dual pump flow for clamshell, bucket or material handling*
- Efficient transport
- Fast assembly / disassembly
- Tractor type crawlers*
- Over-swing preventative device*
- Low maintenance
- Excellent reliability
- Worldwide service network

*optional items

<http://www.kobelcocm-global.com>

KOBELCO CONSTRUCTION MACHINERY EUROPE BV
FOR EUROPE, RUSSIA, CIS
TEL: +31-(0)36-549-5510
Jos.verhulst@kobelco.com

FOR UK, IRELAND AND SOUTH AFRICA
TEL: +44-(0)1342-301122
Mark.evans@kobelco.com

KOBELCO CONSTRUCTION MACHINERY EUROPE BV

CONTENTS

05

Comment

Masakazu Usami, Division Director - Cranes, Kobelco Construction Machinery Europe, previews our latest issue.



06

GH Johnson / Treatment Works

Sewer infrastructure upgrade sees GH Johnson Crane Hire's CKE1350G-2 swing into action for Amey Binnes in Annan, Scotland.



08

Sheet Piling UK / Silvertown Tunnel

Complex sheet piling project on TfL's Silvertown Tunnel benefits from Sheet Piling UK's expertise and CKE900G-3's versatility.



11

Stock Cranes

Kobelco Cranes' Mark Evans explains how Kobelco's range of Stock Cranes can benefit customers across the EAME region.



12

Niaron / Foynes Port expansion

Delivery and commissioning of Niaron's new CKE2500G-2 complete with machine now working at Foynes Port expansion project.



14

BPH / Old Oak Common

BPH Equipment's third new CKE900G-3 crawler crane of 2021 goes straight to work on the UK's prestigious High Speed 2 (HS2) project.



16

Q Crane Hire / Stone Ness Lighthouse

CKE1350G makes light work of installing new lighthouse at Stone Ness, on the Thames Estuary, UK.



18

Van't Hek / Cofferdam construction

Vital cofferdam construction sees Van't Hek Projects use CKE900G-2 and 7065 for sheet-piling duties on Baltic Pipe II energy project.



20

GH Johnson / HS2

GH Johnson's CKE800G-3 and CKE2500G-2 help deliver over 13,000 pre-cast concrete segments for tunnels on the UK's High Speed 2.



22

Stay in touch...

Join Kobelco Cranes on social media and stay up-to-date with all the latest news and competitions!



Cover: Murphy's CKE1350 working for Laing O'Rourke near Duxford, UK. © Tristram Mayes

STOCK CRANES FOR SALE



Masakazu Usami
Division Director Cranes
(Kobelco Construction Machinery Europe)

Hello and welcome to the latest edition of Kobelco Cranes's customer magazine!

This issue includes reports from important infrastructure projects across Europe, including the strategically important High Speed 2 rail project in the UK, the Foynes Port expansion project in the Republic of Ireland, and the Baltic Pipe II energy project in Denmark.

Looking at the stories in this issue, what struck me is how photogenic our industry is. I've been amazed by the quality of photography, including our spectacular cover shot, which shows Murphy's CKE1350 working for Laing O'Rourke near Duxford in the UK, and was taken by crane operator Tristram Mayes.

If you have a picture, you think would look good on our cover, or in the magazine, don't forget to connect with us on Instagram and LinkedIn and tag us in your picture.

This month also marks the return of the UK's popular Vertical Days show (11-12 May) – "Europe's largest lifting equipment event" – and we'll be exhibiting a 100 tonne capacity, Stage V/ Tier 5 compliant CKE900G-3 lattice boom crawler crane, painted in Q Crane Hire's colours prior to delivery, so don't forget to drop by our Stand (112) and say hello!

KOBELCO
CONSTRUCTION
MACHINERY EUROPE
B.V. (UK)
Unit 9, The Felbridge Centre, East
Grinstead, West Sussex
RH19 1XP, UK
Tel: +44-1342-301122

KOBELCO
CONSTRUCTION
MACHINERY EUROPE
B.V. (The Netherlands)
Veluwezoom 15, 1327 AE
Almere, The Netherlands
Tel: +31-36-549-5510

KOBELCO
CONSTRUCTION
MACHINERY EUROPE
B.V. (Germany)
Germany, Austria and
Switzerland
Tel: +49 (0)172 7946087

DISTRIBUTORS
Russian Federation
FKR Machinery
105187, Russia, Moscow,
Room 1, Office 4,
Mironovskaya Street
Tel: +7-495-981-4545

Republic of Turkey
Das Otomotiv ve
Jeneratör Tic. A.Ş
Gardenya Plaza 5, Kat: 2

34758 Ataşehir - İstanbul
- TÜRKİYE
Tel: +(90) 216 456 57 05

People's Democratic
Republic of Algeria
Manyl Machinery
Centre des affaires
AL-Qods, bureau 08-07
niveau 04 Chéraga Alger
- Algeria
Tel: +213 (0) 21-343-173

HEAD OFFICE – JAPAN
KOBELCO
CONSTRUCTION
MACHINERY CO., LTD
Tokyo, Japan
Tel: +81-(0)3-5789-2121



Brand new crawler cranes available from stock, from 80-250 tonne lifting capacity

Contact Mark Evans, Kobelco Construction Machinery Europe (UK) - Crane Division.

T: +44 (0) 1342 301122 M: +44 (0) 7880 381310

Unit 9, The Felbridge Centre, East Grinstead, West Sussex, RH19 1XP
mark.evans@kobelco.com kobelco-europe.com/products-cranes/



**Vertical
days**
11TH-12TH MAY 2022

East of England Arena

SEE US ON STAND

112

www.vertikaldays.net

Storm relief

Sewer and storm-relief infrastructure upgrade for Scottish Water, sees GH Johnson Crane Hire's CKE1350G-2 swing into action for Amey Binnes in Newington Park, Annan, Scotland.

Construction of a 4,000m³ storm relief storage tank measuring an impressive 25m in diameter and 12.5m deep, is underway in Annan, Scotland with G H Johnson's CKE1350G-2 performing lifting duties at the



“extremely tight site”, according to Rob Paul, Site Manager, Amey Binnes.

On hire to ASG Tunnelling & Civil Engineering, the CKE1350G-2 is equipped with a 51.8m main boom and 55 tonnes of ballast and is lifting pre-cast concrete elements of the tank, including 19.27 tonne beams, as well as ancillary site equipment, including a 30 tonne Hitachi excavator at 12m, according to Rob.



“Maximum working radius at the site,” says Rob, “is 40m lifting 7.8 tonnes, but we’ve also lifted concrete elements of 18 tonnes at 20m, 25 tonnes at 15m and 31 tonnes at 12m, as well as lifting equipment and concrete elements 18m below grade to the bottom of the shaft.”

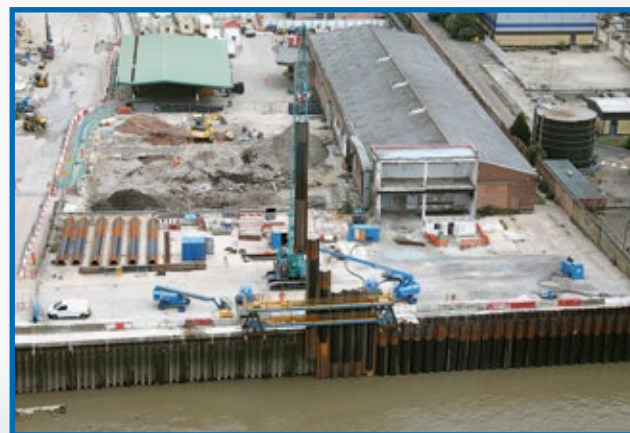
Besides the storm relief storage tank, Amey Binnes is also constructing new 825mm and 450mm diameter relief sewers, three weir chambers alongside upgrading other sewage and storm relief infrastructure in the area.

The new tank comprises a precast segmental shaft of 26m external diameter and 25m internal diameter, resting on a 2m thick cast-in-situ reinforced concrete slab foundation and covered with a concrete slab composed of precast units with a combined weight of 361 tonnes.

The segmental shaft is built joining segment to segment to form a ring, and ring to ring to form the shaft. The connection is achieved using hidden mechanical fixings and is completed with seals to make the structure watertight.

Shore thing

Complex sheet piling project on TfL's Silvertown Tunnel benefits from specialist contractor Sheet Piling UK's expertise and Kobelco CKE900G-3's versatility.



At just over 346 km (215-mile) long, the River Thames is the second-longest river in the United Kingdom. Currently crossed by over 200 bridges, 27 tunnels, six public ferries, one cable car link, and one ford along its course.

All that is set to change, however, with the opening of Transport for London's (TfL) £1 billion, 1.4km-long, Silvertown Tunnel in 2025. Designed to reduce congestion in and around the Blackwall Tunnel, something that's estimated to cost the UK's economy over £10 million per year, it will be the first underground crossing of the River Thames in over 40 years!

Delivering the project is the responsibility of the Riverlinx JV (Ferrovia Construction, BAM Nuttall and SK E&C), with specialist contractor Sheet Piling UK (SBUK) tasked with delivering a "complex sheet pile installation" across the closed entrance to Royal Victoria Docks, close to Silvertown, on the river's north side and south-east of Canning Town.

This will create retaining earthworks and a stronger stretch of Thames-river wall enabling construction of the 1.4km-long, twin-bore tunnel under the river. To facilitate this, SPUK is installing around 350 linear metres of steel sheet piles – ZZ38700 x 15.2m - to install a new river wall in a location where the existing one is "highly distressed", according to managing director Andrew Cotton.

"Being required to use conventional piling methods because of the wall's poor condition, but unable to install spud piles into the riverbank, due to Environment Agency (EA) restrictions, our in-house sheet piling design team had to devise a different solution," explains Andrew.

The solution was to design a bespoke cantilever piling gate, located on the existing quay side,



to provide the required stability for sheet pile installation. Using this method, says Andrew, means SBUK can ensure the temporary sheet piles form a secure flood defence wall until the permanent flood defence wall can be constructed and the temporary steel sheet piles cut down to the final desired level.

New 'Free Issue' Z-section sheet piles are being driven into the Thames 1m in from the existing wall, to avoid excess land-take and environmental impacts, using a PVE38M vibratory hammer, which weighs 8 tonnes, supported by a Tier 5/Stage V Final Kobelco CKE900G-3 lattice-boom crawler crane, which was supplied with 44.7m boom.

To facilitate the works, the CKE900G-3 is using a 36.6m main boom with lifting duties ranging from 6 tonnes at 32m, up to 27.7 tonnes at 10m. Besides the 15.2m-long ZZ38700 piles, the CKE900G-3 is also being used

to move SPUK's welding set and diesel bower, the main frame and Kentbridge Block and 8 tonne PVE38M vibratory hammer.

"The small operating footprint and excellent manoeuvrability of the CKE900G-3 have been invaluable at the site," says Andrew. "Added to which, it has good duties at a large radius – ie exceptional outside duties – while the KCross system allows information on performance and operation to be easily communicated to our client.

The CKE900G-3 is the first Kobelco crawler crane SPUK has added to its fleet and Andrew has also been impressed with the heavy-duty lattice boom jib for extraction works and the fact it can be transported in full ballast configuration.

"Besides that," adds Andrew, "the CKE900G-3's environmental credentials, ease-of-use, backed with excellent reliability and after sale's support, mean this is a great package for us and our clients!"

KOBELCO

Grab your genuine

FILTERS

FOR MACHINE MAINTENANCE



Contact us today for quotations and more information!

KOBELCO CONSTRUCTION MACHINERY EUROPE (UK)

EMAIL: clive.harber@kobelco.com

TELEPHONE: +44-(0)1342-301122

Stock Option

As demand for crawler cranes continues to increase, Kobelco Cranes' Mark Evans explains how Kobelco's range of Stock Cranes can benefit customers across the EAME region

Kobelco Construction Machinery Europe always keeps an inventory of brand-new cranes in stock, held either in the UK, or it's European headquarters in Amsterdam, Holland.

This facilitates easy and rapid shipment to the European Union (EU), or the United Kingdom (UK) for unexpected projects that materialise in the short-term.

Current stock includes a range of new Tier 5/Stage V compliant machines, from an 80-tonne capacity CKE800G3, through to a 110-tonne capacity CKE1100G3.

Stock machines are usually supplied in Kobelco colours, but if you prefer your own livery, this can be arranged pre-delivery.

All machines are supplied, as standard, with:

- Kobelco's Kobelco KCross (Kobelco Remote Observation Satellite System) system, which is designed to help maximise machine efficiency and uptime
- Kobelco's G-Mode, which improves performance by allowing the winch to hoist at high speed without the engine having to operate at high speed
- a range of main boom and fixed jib options
- twin hoists
- a variety of hook blocks to suit
- air-conditioned cabs

Options include:

- reeving winches
- Orlaco safety camera system
- aircraft warning lights
- engine heating system

Once an order is confirmed, delivery can usually be arranged with two to three weeks, dependent on destination, and this includes:

- crane commissioning
- operator inductions
- maintenance training

Our range of Stock Cranes is constantly changing as we continue to receive (and sell) new machines, so it's always worth checking our website to see what's currently available.

To discover how Kobelco's Stock Crane options can help you and your business, contact Mark Evans, today!

For more information about Kobelco's Stock Cranes, contact Mark Evans, KCME (UK) - Crane Division

T: +44 (0)1342 301122
M: +44 (0)7880 381310

E: mark.evans@kobelco.com



Following delivery and commissioning of Niaron's new CKE2500G-2, the latest addition to its crane fleet is now working at the Foynes Port expansion project for SFPC

Kobelco Construction Machinery Equipment (KCME) has completed the delivery and commissioning of Niaron's new, 250-tonne capacity CKE2500G-2, the first Kobelco crawler crane to be added to the County Limerick, Republic of Ireland-based construction and civil engineering company's fleet.

“The CKE2500G-2 is a simple, easy-to-use and service machine that complements our existing fleet and that delivers for us, and our clients”

Ronan Keane, Director, Niaron

The CKE2500G-2, which boasts a Tier 5/Stage 5 (Final) engine, was supplied with a 72m main boom, 70-tonne hook, 35-tonne hook and a 13.5-tonne ball hook, for the auxiliary sheave, making it suitable for work on the connection of the East Jetty and West Quay for Shannon/Foynes Port Company (SFPC).

The expansion of the port, which is the only one in the Republic of Ireland capable of accommodating Capesize, Panamax and Post Panamax vessels, is part of SFPC's Vision 2041 development masterplan. The plan includes modifications to the existing jetties

Niaron's CKE2500G-2 ready for port expansion



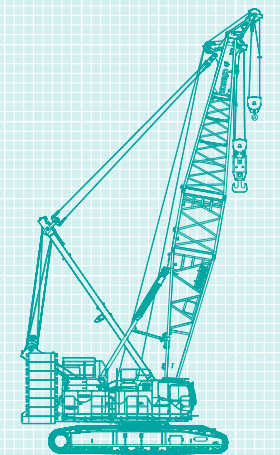
and quays and includes connection of the East Jetty to the West Quay to facilitate mooring of vessels in increased numbers and size, and port related operations. The project increases port quay length capacity by 21% or 120m going from a total quay wall length of 560m to 680m.

With the project set for commencement this year, all eyes are now on the CKE2500G-2 and its ability to deliver, something Ronan Keane, Director, Niaron, says won't be a problem.

“The CKE2500G-2 is a simple, easy-to-use and service machine that complements our existing fleet,” says Ronan. “It's capacity for work, availability, and competitive price, is matched by an excellent after sales service, while our in-house operators find the machine a great work environment. Put all that together and this is a package that delivers for us and our clients.”



CKE2500G-2



- ENGINE: STAGE V/TIER 5
- MAX LIFT CAP: 250 TONNES

Third CKE900G-3 for BPH Equipment at HS2

Commissioning of BPH Equipment's third new CKE900G-3 crawler crane of 2021 has been completed, with the machine going straight to work on the UK's prestigious High Speed 2 (HS2) rail project.



Besides the three CKE900G-3s, the company also took delivery of two new, 135-tonne capacity CKE1350G-2s in 2021 as well.

The Tier 5/Stage V compliant CKE900G-3 was delivered to the company's yard in Long Bennington, near Newark, Nottinghamshire by Paul Thorpe Transport, before being assembled and commissioned by James McCulley, KCME, working with two of BPH's own engineers.

Assembly and testing of the crane, which was supplied with full counterweight, 48.8m main boom and auxiliary sheave, with a 35-tonne hook on two falls and an 11-tonne baby hook on a single fall, were completed in three days.

"The crane basically arrived as a 3D jigsaw, with the main base machine and components arriving on separate trucks," explains James, "the only thing already on the base machine, is its paint!"

Once complete, the CKE900G-3 was transported to HS2's Old Oak Common, where it is working for the Balfour Beatty, Vinci, Systra (BBVS) joint venture at OCC's £1 billion main station contract, alongside four of BPH's Stage V/ Tier 4 Final Kobelco CKE1350 crawler cranes during construction of the station box's diaphragm walls and associated structures.

"This is the 11th CKE900G-3 delivered in the UK this year," says James. "With more still to come in 2021, and with a number of cranes already ordered by our customers for 2022, the CKE900G-3 is proving to be the crane of choice in its class!"

Light lift

Q Crane Hire's Kobelco CKE1350G makes light work of installing new lighthouse at Stone Ness, on the Thames Estuary, UK



jack up barge, supplied by Red 7 Marine, which besides providing a stable platform for the CKE1350G, was also used to deliver all plant and materials from Tilbury, with the lighthouse's existing base slab being reused to reduce the volume required.

The old lighthouse was lifted out in two sections, the heaviest of which was a 15-tonne single lift, performed at 22m radius. Other lifts were performed, both on the main hoist, as well as the rooster sheave, and auxiliary line, such as aggregates, smaller items of plant and civils materials.

The new, 11.58m-high modern lighthouse which features a marine beacon and solar panel located at the top of the structure, was also lifted in, in two sections at similar weights and radius.

Commenting on the job, Andrew Pearson, Head of Operations, Q Crane Hire, said: "With the crane working on board a jack up barge, it was a necessary requirement to choose a crawler crane, as opposed to a mobile crane, and the CKE1350G was selected for its ability to comfortably meet the duties and radius required."

Port of London Authority assistant civil engineer, Peter Trent, who led the project, said: "Part of our ongoing investment to keep the river safe for all users, this upgrade will ensure the lighthouse is fit for purpose for years to come."

National crane company, Q Crane Hire has used one of its 135-tonne capacity CKE1350Gs to remove and replace an old lighthouse on the Thames Estuary at Stone Ness working for Southbay Civil Engineering.

The £380,000 upgrade of the 13.4m-high Stone Ness Lighthouse, which was built in

1885, on the north bank of the Thames near Dartford Bridge, was completed within approximately one month, with the crane arriving in late September 2021. The CKE1350G was supplied with a 39m main boom, plus rooster sheave and auxiliary hoist.

Given the location of the structure, the work was carried out from a

KOBELCO

KCROSS

- Crane Remote Observation Satellite System -



KOBELCO has developed a remote operation management system for our cranes. Machines fitted with this system transmit working condition, location, and maintenance history to provide owners with fact-based information that gives tremendous advantages for their asset management.

Main Functions



LOCATION

> Acquire Working Condition and Location of the Fleet

The system is based on satellite mapped images, Internet connection, and other means to remotely monitor a crane's working condition and its location. This information is useful in planning maintenance schedules and providing guidance to operators, helping to ensure that crane owners can maximize their fleet efficiency.



WORKING

> Managing Safety/Operational Records and Monitoring Working Status

Crane owners can monitor and record the working condition and operational status of onsite machines on entire fleet basis, promoting greater crane safety.



SAFETY

> Remote Failure Diagnosis

It is possible to narrow down possible failure causes quicker and more accurately by remotely accessing to the current and historical status of the machine, helping to minimize the machine downtime.



MAINTENANCE

> Preventive Maintenance Ensures Good Machine Condition and Protects Value

The system recommends appropriate parts replacement timing based on the machine working hour. Regular maintenance can help the machines running at peak performance at all times.



Viewing of machine data via the Internet allows provision of complex machine data

Using the Internet, customers can check on a crane's operational status from the office, and its location can be checked with GPS. Operation data such as whether or not a crane is in operation, total operating and idling hours, etc., is displayed in easy-to-read graph and table formats.



Location display



KCROSS reports (Possible to customize data)

Operation data can be received on a mobile phone When necessary, this system can send data as a text message to a mobile phone



■ Equipment required

IT controller
IT antenna, GPS antenna
Set-up package (including bracket, signal relay harness and software)
Computer with broadband connection for internet access (Microsoft IE6.0)
Excel software (Microsoft Office 2000 or later) to view downloaded documents

■ Equipment required

KOBELCO hydraulic crawler cranes, including some existing models

Detailed Machine and Operation Data Can Be Accessed over the Internet

Operating data for a given crane can be accessed and accurately monitored from the Internet terminal in the crane owner's office.

Main Data Handled

- Map: Shows past and latest locations and travel history of all machines in the owner's fleet.
- Performance record: Hours of operation, Lift operations, and Safety record in the period of a day, a week, or other desired span.
- At-a-glance function: Outputs a report (in the form of a record log or sheet) that shows whether or not the machine is currently operating, its total operating hours, and other operating data.



Energy link

Cofferdam construction sees Van't Hek Projects use CKE900G-2 and 7065 for sheet-piling duties on *Baltic Pipe Project: Offshore Denmark*, allowing transportation of natural gas from Norway, Europe's second largest exporter of oil and gas, to the Danish and Polish energy markets.

Netherlands-based Van't Hek Projects has used a Kobelco CKE900G-2 and 7065 during construction of a vital cofferdam in Houstrup, Denmark for the *Baltic Pipe Project: Offshore Denmark*, a collaboration between gas & electricity transmission system operators Energinet in Denmark and Gaz-System in Poland.

Onshore Denmark will expand the existing Danish transmission system from West to East and has been divided into six connected construction projects, including the construction of a new, 1000mm-diameter pipeline from the beach at Houstrup to Nybro, Sweden.

The cofferdam will provide a secure

platform for the specialist equipment needed to pull the under construction *North Sea offshore pipeline* (an offshore pipeline between the Norwegian gas system in the North Sea and the Danish gas transmission system) ashore, where it will join the existing gas distribution network.

To construct the cofferdam, which used sheet piles varying in length from 9 to 20m, depending on ground conditions, with a maximum weight of 4 tonnes, Van't Hek's 100-tonne capacity CKE900G-2 was fitted with a 36m boom, while the 65-tonne capacity 7065 was fitted with a 30m boom, without a runner. To drive the piles into the sandy shore, both machines used a 12-tonne ICE vibro hammer and their main and auxiliary winches to vibrate the sheet-piles into the ground.

To advance the works, Van't Hek Projects, who specializes in sheet and tubular pile installation "at the border of land and water worldwide", had to overcome several obstacles, according to Bart van't Hek, Director, Van't Hek Projects.

"Besides the abrasive sand, harsh, winter weather conditions, local laws, and regulations, and, of course, COVID19 restrictions," said Bart, "Van't Hek Projects had an extremely short preparation and build time, just six weeks and 3.5 months respectively, with the work taking place from January to April.

"Under these conditions both our new 100-tonne capacity CKE900G-2 and the 65-tonne capacity 7065 performed well," added Bart.



**CKE800G-3 and
CKE2500G-2 helping
deliver over 13,000
pre-cast concrete
segments for three
tunnels on the UK's
High Speed 2 (HS2).**

Pre-cast concrete segments made at Stanton Precast's factory in Ilkeston, Derbyshire, are being sent by road to three locations in rural Buckinghamshire and Northamptonshire.

Central to operations at Stanton's factory, and a perfect fit for the cramped site, according to Jason Thompson, Operations Manager at GH Johnson Crane Hire, who supplied the cranes, are a Tier 5/ Stage V, 80-tonne capacity CKE800G-3, and a 250-tonne capacity CKE2500G-2.

Delivered to the site in August, the CKE800G-3 was supplied with a 36m boom and single sheave block, while the CKE2500G-3 came with a 42m boom and single sheave block, as well as a ball hook on an auxiliary sheave. Maximum lift, so far, has been 48 tonnes.

The three sections of cut-and-cover tunnels, which HS2 has dubbed "green tunnels", will form an aggregate length of 6.4 Km and are in Chipping Warden (2.4 Km) and Greatworth (2.6 Km) in Northamptonshire and Wendover (1.4 Km) in Buckinghamshire.

The tunnels are being built using a cut-and-cover operation – a cutting is dug in the ground, a tunnel box is then formed from the precast concrete segments, and then covered over landscaped, with work expected to finish in 2024.

Perfect Fit



STAY IN TOUCH...



Follow Kobelco Cranes Europe on Instagram - @kobelcocraneseurope - and tag us with #kobelco #KCME #kobelcocranes for your chance to win exclusive Kobelco goodies from our Fan Shop every month!



Keep up-to-date with our latest product launches, company news, exclusive events, pictures and video via LinkedIn.

PIC RIGHT: This issue's Social Media photo winner is Lee Beevers (fleece on the way!) and shows a CKE2500G, on hire from GH Johnson, working for rail and infrastructure pre-cast concrete specialist Sateba Group at HS2's casting yard in Ilkeston, Derbyshire, which is part of HS2's "Green Tunnel" initiative.



KOBELCO



Quality used crane finder service



We have a wide selection of used cranes available. We are also happy to facilitate the sale of any used machines on your behalf

If you have a used crane for sale, or are looking to buy a used crane contact:

Mark Evans, Kobelco Construction Machinery Europe (UK) - Crane Division.

T: +44 (0) 1342 301122 M: +44 (0) 7880 381310

Unit 9, The Felbridge Centre, East Grinstead, West Sussex, RH19 1XP

mark.evans@kobelco.com kobelco-europe.com/products-cranes/



KOBELCO



SK210D car dismantler scale model



Visit the Kobelco Fanshop today!

www.kobelcofanshop.com



NEW Gift vouchers



KOBELCO

KOBELCO CONSTRUCTION MACHINERY EUROPE B.V. (The Netherlands)

Veluwezoom 15, 1327 AE Almere, The
Netherlands
T: +31-36-549-5510

European countries & Israel



Sales: Jos Verhulst
M: +31-(0)6-5346-8439
E: jos.verhulst@kobelco.com

European countries & Israel



**Service & Technical support:
Rene Kraakman**
M: +31-(0)6-5335-3552
E: rene.kraakman@kobelco.com

European countries & Israel



Spare parts: Jo-Anne Lehmann
T: +31-(0)36-549-5510
E: joanne.lehmann@kobelco.com



Masakazu Usami
Division Director Cranes
T: +31-(0)36-549-5510
E: usami.masakazu@kobelco.com

European countries & Israel



**Service & Technical Support:
Marcel Thole**
M: +31-6-2123-4180
E: marcel.thole@kobelco.com

KOBELCO CONSTRUCTION TECHNICAL TEAM



**Manager Engineering Dept:
Hiroyuki Nishikawa**
T: +31-(0)36-549-5510
E: nishikawa.hiroyuki1@kobelco.com

UK, Ireland & Africa KOBELCO CONSTRUCTION MACHINERY EUROPE B.V. (UK)

Unit 9, The Felbridge Centre, East
Grinstead, West Sussex,
RH19 1XP, UK
T: +44-1342-301122



Sales: Mark Evans
M: +44-(0)-7880-381310
E: mark.evans@kobelco.com

UK, Ireland & Africa



**Service & Technical support:
James Mcculley**
M: +44-(0)-7795-552182
E: james.mcculley@kobelco.com

UK, Ireland & Africa



**Service & Technical support:
Sam Clarke**
M: +44-(0)-7879-554686
E: sam.clarke@kobelco.com

UK, Ireland & Africa



Spare parts: Clive Harber
T: +44-(0)-1342-301122
E: clive.harber@kobelco.com

KOBELCO CONSTRUCTION MACHINERY EUROPE B.V. (Germany) Germany, Austria and Switzerland

KOBELCO CONSTRUCTION MACHINERY CO., LTD.



**Marketing & Product
Development: Detlef Brueckner**
M: +49 170 4590515
E: detlef.brueckner@kobelco.com