

KOBELCO

SK350DLC-11E / SK400DLC-11E

Performance  Design

Ultra High Reach Demolition Excavator
SK350D_{LC} SK400D_{LC}



Japan's No. 1
Demolition Equipment Supplier



Complies with the EU Stage V
exhaust emission regulation

Built for Perfectionists™

Performance Design

PERFORMANCE — More power and more speed give the efficiency and productivity you demand.

DESIGN — Operator-centric design makes no compromises in ease-of-use or comfort.

The new SK350DLC and SK400DLC demolition excavators blend performance and design to provide value unseen until now.

And as dedicated demolition machines, they provide the functionality and accessories to get any job done.

KOBELCO continue to push the envelope to create an unforgettable and unparalleled experience.

SK350D_{LC} SK400D_{LC}

To the Next Level of Power and Functional Aesthetics

High-output engine compliant with the latest regulations

New engines comply with Stage V EU emission standards. High engine output provides excellent performance in all aspects of work.

Model : ISUZU 6HK1

Engine output

210kW/1,900min⁻¹

ISO 14396 : without fan

Exquisitely designed LED backlighting

Switches and dials are equipped with LED backlighting. In addition to increasing recognizability at night, the lighting gives the interior a classy aura.

Automatic lighting LED door light

A bright LED door light turns on in conjunction with opening the door and turning off the key.





Simple operation with the jog dial

Several operations combined in the jog dial. Watch the screen associated with the dial, and then turn, select, push, and go. Simple!



New console tilt makes getting in and out easy

The design of the left console with safety lever takes getting in and out into consideration with a large-angle recoil.



Know everything at a glance: Large 10-inch colour monitor

Incorporates the industry's biggest large-format monitor. The information you need is easy to see and operating the menus is simple. The large camera image means you can quickly confirm safety conditions.

Specification selection

Select attachments to perform demolition from high heights to lower stories, and even basement levels with just one machine.

Ultra long attachment specification

Ideal for demolishing buildings over 20m high

The cross-cylinder construction allows for 3-piece ultra-long attachments, and the overall reach can be adjusted through arm selection* and the use of an insert boom.

These machines are ideal for demolishing buildings 5 to 8 stories tall and jobs that require a reach of over 12m.

*Arm selection available only for SK400DLC

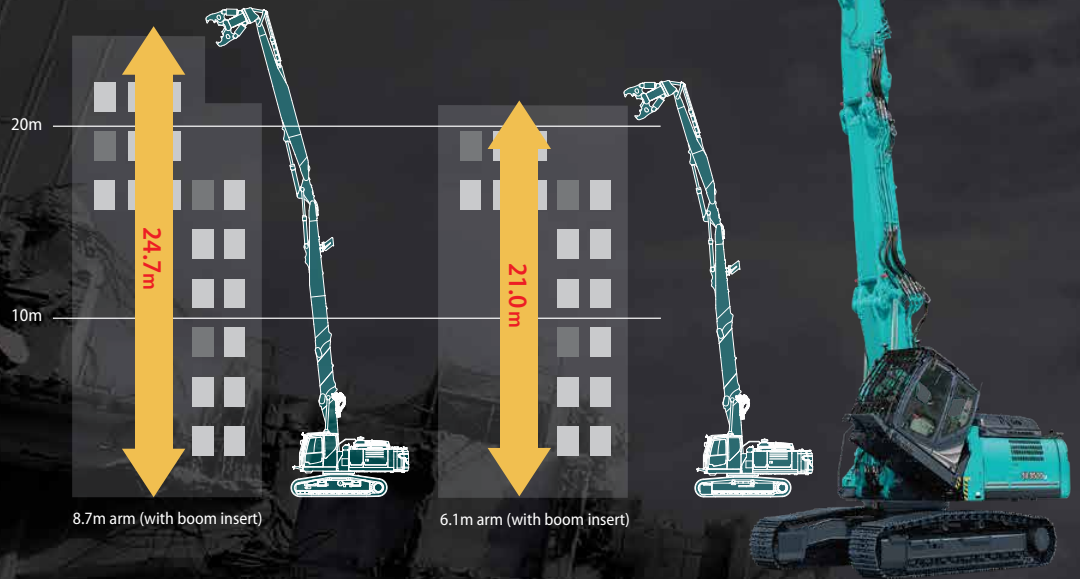
Maximum working height (arm top pin)

SK350D_{LC} 6.1m arm, with boom insert :	Approximately	21.0m
SK400D_{LC} 6.1m arm, with boom insert :	Approximately	21.1m
8.7m arm, with boom insert :	Approximately	24.7m



KOBELCO original nibbler KR1100TPR-2

- Maximum jaw opening width : 1,100mm
- Crushing force : 1,550kN (center) / 950kN (tip)
- Cutter length : 200mm
- Weight : 2,600kg



Separate boom specification

Demolish lower stories, foundations, basements

A wide working range enables the demolition of lower stories, down to the building's foundation. The large, powerful crusher attachment is perfect for jobs that demand power. And, the strong attachment holding ability enables a high level of work efficiency.

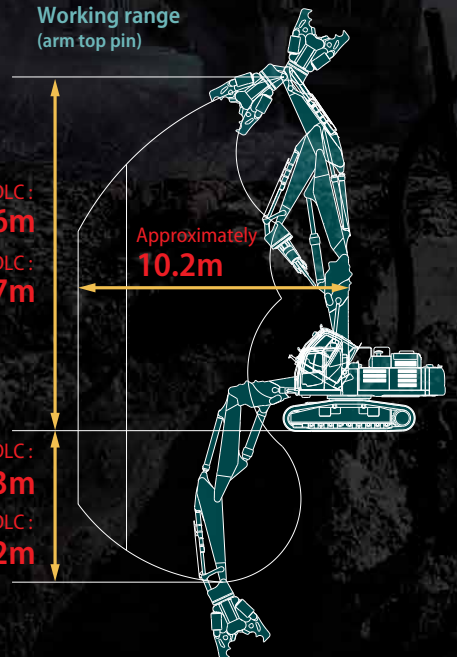
Working range (arm top pin)

SK350DLC:
Approximately **13.6m**

SK400DLC:
Approximately **13.7m**

SK350DLC:
Approximately **6.3m**

SK400DLC:
Approximately **6.2m**



KOBELCO original nibbler KR1350TPR-40

- Maximum jaw opening width : 1,350mm
- Crushing force : 1,770kN (center)
1,210kN (tip)
- Cutter length : 200mm
- Weight : 3,800kg

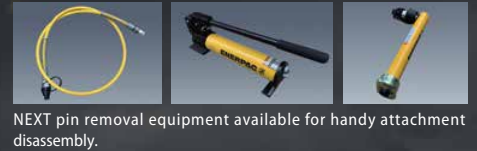
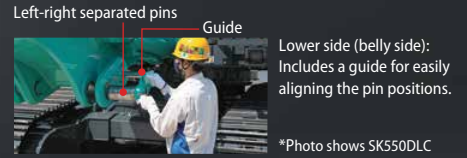
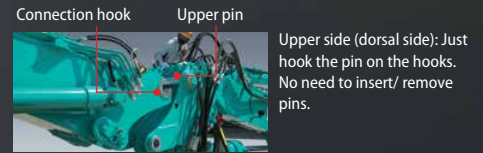
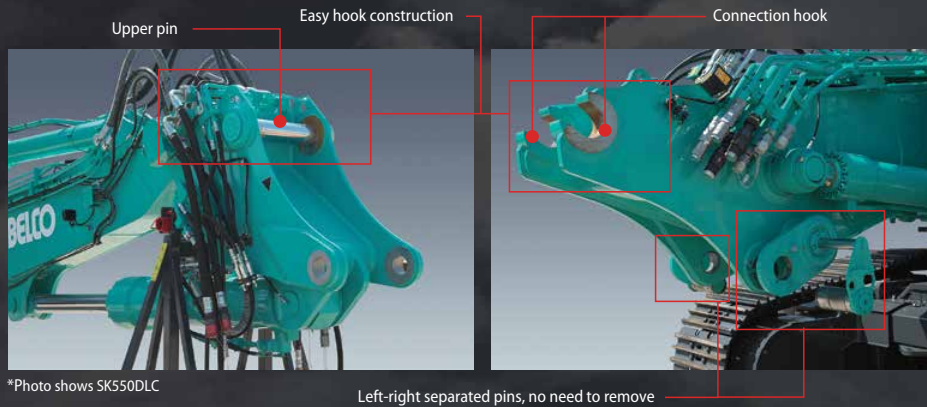


Transport of disassembled machine

Including NEXT attachments, incorporates KOBELCO's state-of-the-art assembly/disassembly technology.

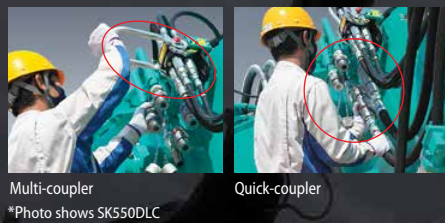
Quick assembly NEXT attachments

Attaching a boom attachment to the main boom uses the NEXT joint system, consisting of a hook joint on the back and left-right separated manual pins on the belly. Safely and quickly assemble and disassemble.



Piping connection also simple with multi-coupler and other implements

With the attachment joint part, connect the hydraulic piping to the boom side, and then connect/disconnect with the multi-coupler or quick coupler. Safely and conveniently connect piping on the ground.



Quick hitch piping is equipped as standard

Dedicated piping is equipped as standard to attach the quick hitch for easy exchange of front attachments.



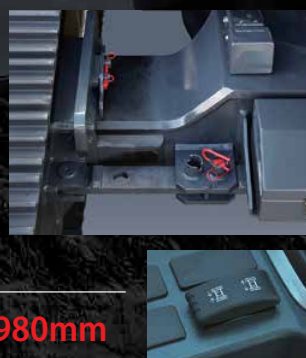
Object handling hook (OHK hook) is equipped as standard

Lifting hook equipped on the bucket link part with the separate boom specification. It can lift the ultra long attachment by itself, so no loading crane is necessary when changing attachments or loading/unloading the machine onto a transport truck.



Crawler width changeable while grounded (only SK400DLC)

Crawlers can be retracted to reduce crawler machine width to below 3m for ease of transport. The hydraulic system makes light work of extending or retracting with crawler shoes remaining on ground.



Crawler width when retracted : **2,980mm**

Separable counterweight (only SK400DLC)

The counterweight is separable for easy attachment/-detachment when transporting the base machine.

Because it is constructed with the separable weight inside a case-style weight, removal can be done quickly.



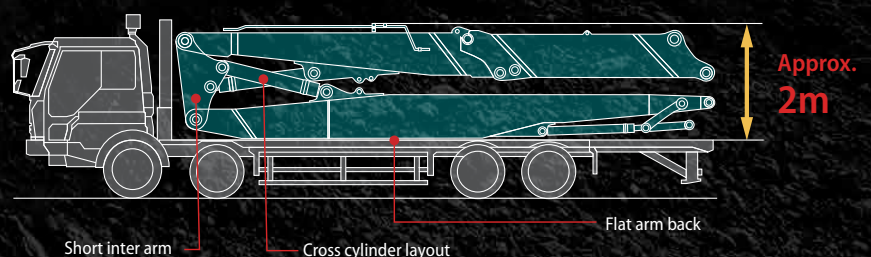
Attachment pressure drain from the display

Hydraulic oil pressure draining before exchanging the front attachment or disassembling the boom attachment can be done by selecting it on the display from the operator's seat.



Attachment height during transport

[NEXT Ultra long attachment specification]



Reliability and safety

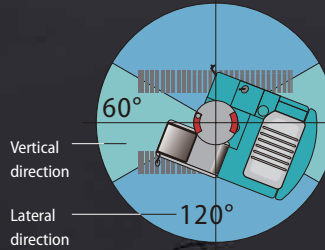
KOBELCO's latest technology for keeping the machine in top shape and protecting the operator.

Stability warning system with longitudinal/horizontal detection

The device calculates the tipping danger area from the posture and swing angle of the attachment, and if it detects a dangerous situation, it alerts the operator with an alarm and a warning on the screen. By detecting longitudinal / lateral position of the upper structure, work can be done in a larger radius at the more stable, lateral upper structure direction.



Stability warning display



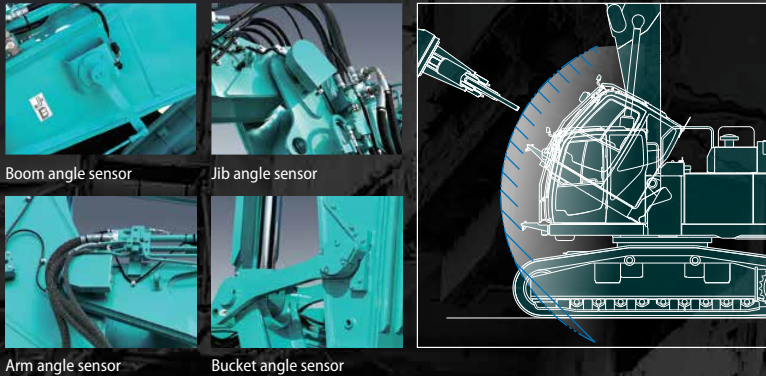
Vertical direction
Lateral direction

Cab interference prevention system with soft-stop feature

If the attachment comes within a certain distance of the cab, an alarm and warning on the screen alert the operator, and the attachment stops softly and automatically to protect the operator. Since there is no worry of contact, the operator can confidently perform lever operation even close to the cab.



Cab interference warning display



Boom angle sensor

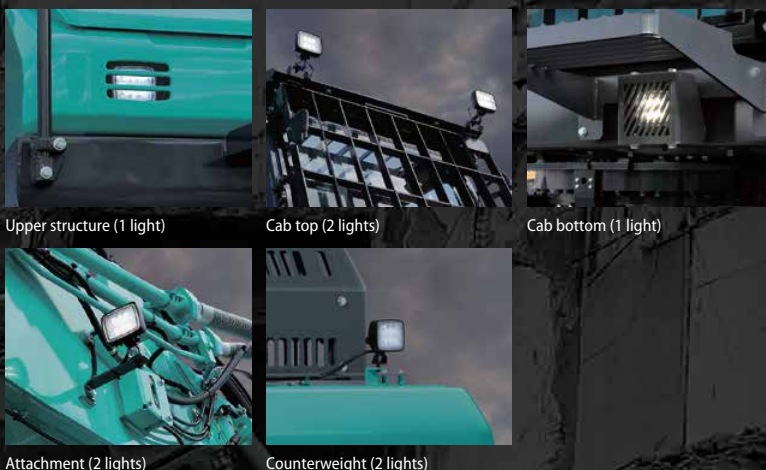
Jib angle sensor

Arm angle sensor

Bucket angle sensor

LED work light to keep visibility in low light or at night

Equipped with eight high brightness LED work lights. The lights keep the work area bright even in low light or at night. Work area safety can also be quickly confirmed.



Upper structure (1 light)

Cab top (2 lights)

Cab bottom (1 light)

Attachment (2 lights)

Counterweight (2 lights)

Right, left and rear view cameras / Eagle-Eye View

Cameras are equipped on the rear, right, and left sides of the base machine. Camera image is easily visible on the large 10-inch monitor. The blind spots behind and to the right can be checked in a glance from the operator's seat to confirm safety. The operator can choose how to display the camera image.



Simultaneous rear/right view

Eagle Eye View

Top-down view

Rear-side camera

Left-side view

Right-side camera

Eagle-eye view

Note : Loading of lashing point (only SK400DLC)

On the drive motor side, the brackets are attached to the top of the lower car body as lashing points to prevent interference between the piping cover and the binding wire.



Idler side

Drive Motor side

Comfort

A unique operating environment of building demolition machine to prevent operator fatigue.

Demolition spec cab with tilting function



Easy to clean open/close cab guard (upper front window and skylight)
*Photo shows SK550DLC

A Demolition spec cab with a 30° tilt capability is equipped as standard for comfortably demolishing tall buildings where the operator spends a long time looking up. With no beam between the front window and skylight to block visibility and angled grids on the cab guard, good work visibility is maintained.



Vertical open/close roller shades to block direct sunlight.



High upper visibility



36% larger front wiper wiping area (compared to standard cab)



Emergency manual valve for lowering cab



Cab tilt operation switch

Air suspension seat

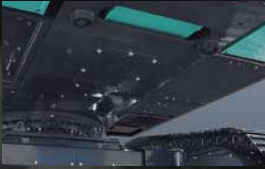
An air suspension seat is equipped as standard, with excellent shock absorption to prevent fatigue even when sitting for a long time. It includes a wide four-inch arm rest that allows you to take a comfortable position and a seat heater for comfortable operation even in winter season.



*Photo shows SK500 excavator

Equipment

For ensuring the machine remains safely usable for a long time.



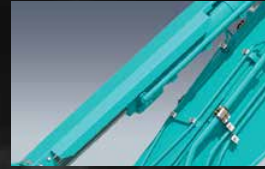
Reinforced upper frame under cover guards
6mm-thick steel plate cover protects devices in the base machine.



Lower frame guard
9mm-thick steel plate cover protects travel-system hydraulic circuits.



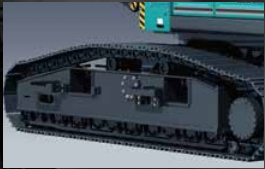
Safety valve for boom & arm & jib cylinder
Prevents attachment from falling if piping is ruptured.



Bucket cylinder guard
Prevents damage to the cylinder from falling debris.



Falling object deflector (Ultra long attachment)
The guard deflects falling debris away from the machine.



Full truck guide (option)
Prevents treads from coming off when mounting on demolition rubble.



Crawler extension / retraction mechanism guard (only SK400DLC)
Hydraulic cylinders protected from flying demolition debris.



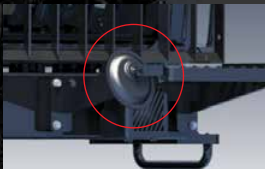
Public address system
Alert workers in the area with clear audio quality.



Travel alarm
The alarm cautions workers in the area that the machine is traveling.



Battery shut-off device
Battery cut-off switch prevents battery discharge over long periods.



Cab lower mirror
Check safety at foot areas and under the cab when tilted.



Cab entry step
Positioned for convenient access to the tilt cab.



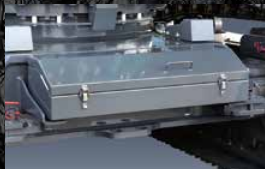
Refueling pump
Quickly and safely refuel from the ground.



Auto lubrication system
Quickly lubricate the attachments.



Water spray
Drain circuit is provided for rust prevention.



Additional storage box (option SK350DLC)
Equipped with a storage box for storing tools and implements.

* The accessory settings may differ according to the specification. Refer to the list of key accessories on the back page for details.



Standard and optional equipment

● = Std ○ = Opt — = not available

Category	Description	SK350DLC-11E		SK400DLC-11E		
		Separate boom Attachment	Ultra long Attachment (21m height)	Separate boom Attachment	Ultra long Attachment (21m height)	Ultra Long Attachment (25m height)
Engine	ISUZU 6HK1 (EU Stage V compliant)	●	●	●	●	●
	Exhaust DOC DPF SCR system	●	●	●	●	●
	Alternator 24V / 90A	●	●	●	●	●
	Starter motor DC 24V / 5kW	●	●	●	●	●
	Batteries 2 x 12V (140Ah)	●	●	●	●	●
	Fan suction type cooling system	●	●	●	●	●
	Auto deceleration function	●	●	●	●	●
Hydraulic system	Auto idle stop	●	●	●	●	●
	3 work modes H, S, Eco	●	●	●	●	●
	Power boost (34.3MPa)	●	—	●	—	—
	Heavy lift mode	●	—	●	—	—
	Pressure release function	●	●	●	●	●
	Independent travel function	●	●	●	●	●
	Auto warm up system	●	●	●	●	●
	Proportional Hand Control (for Rotation & N&B piping)	●	●	●	●	●
	Hydraulic oil VG32	●	●	●	●	●
	Hydraulic oil VG46	○	○	○	○	○
	Hydraulic oil VG68	○	○	○	○	○
Piping	Rotation & N&B piping	●	●	●	●	●
	QH piping	●	●	●	●	●
Cabin	Air suspension seat with heating	●	●	●	●	●
	10 inch colour monitor	●	●	●	●	●
	LED door light	●	●	●	●	●
	Air-conditioner	●	●	●	●	●
	DAB+ radio (FM/AM & AUX & USB & Bluetooth* & hands free telephone)	●	●	●	●	●
	Harness for cab four lights and cab yellow flasher	●	●	●	●	●
	DS cab wiper	●	●	●	●	●
Lights	12V power supply	●	●	●	●	●
	LED work lights ; 2 on cab top & 1 on cab bottom & 1 on upper structure & 2 on rear C/W	●	●	●	●	●
	LED work lights ; 2 on boom	●	—	●	—	—
Working equipment	LED work lights ; 2 on arm	—	●	—	●	●
	NEXT Separate boom attachment package	●	○	●	○	○
	NEXT Ultra Long attachment package for 21m pin height	○	●	○	●	—
	NEXT Ultra Long attachment package for 25m pin height	—	—	○	—	●
	NEXT water spray (water pump & tank are not included)	●	●	●	●	●
	Kobelco original Nibbler KR1100TPR (for Ultra Long attachment)	—	○	—	○	○
	Kobelco original Nibbler KR1350TPR (for Separate boom attachment)	○	—	○	—	—
C/W	OHK hook	●	—	●	—	—
	Heavier C/W (TTL 9,460 kg)	●	●	—	—	—
Undercarriage	Layered C/W (TTL 10,100 kg)	—	—	●	●	●
	VLC (Hydraulic variable undercarriage)	—	—	●	●	●
	600mm triple grouser shoe	●	●	●	●	●
	600mm double grouser shoe	○	○	○	○	○
	700mm triple grouser shoe	○	○	—	—	—
	800mm triple grouser shoe	○	○	—	—	—
	Track guides (one per side)	●	●	—	—	—
	Additional track guides (two per side)	○	○	—	—	—
	Track guides (two per side)	—	—	●	●	●
	Additional track guides (one per side)	—	—	○	○	○
	Full track guide	○	○	○	○	○
Safety	Lower frame guard	●	●	●	●	●
	Engine emergency stop switch	●	●	●	●	●
	Pump emergency mode (KPS release switch)	●	●	●	●	●
	Emergency accel dial	●	●	●	●	●
	Emergency manual valve for lowering attachment	●	●	●	●	●
	Emergency manual valve for lowering cab	●	●	●	●	●
	Over load alarm	●	●	●	●	●
	Safety valve for boom & arm & jib cylinder	●	●	●	●	●
	Demolition spec cab (PSA glass, Tilting function)	●	●	●	●	●
	OPG Level II top guard (ISO 10262;1998)	●	●	●	●	●
	OPG Level II front guard (ISO 10262;1998)	●	●	●	●	●
	Eagle-eye view camera (Rear, Right, Left)	●	●	●	●	●
	Cab lower mirror	●	●	●	●	●
	Falling object deflector	—	●	—	●	●
	Seatbelt indicator on display	●	●	●	●	●
	Travel alarm	●	●	●	●	●
	Cab interference prevention system	●	●	●	●	●
	Stability warning system	●	●	●	●	●
	Public address system	●	●	●	●	●
	Extended guard rail	○	○	○	○	○
Others	Refueling pump	●	●	●	●	●
	Auto lubrication system	●	●	●	●	●
	Harness for engine room light	●	●	●	●	●
	NEXT pin removal equipment	●	●	●	●	●
	NEXT stand for 3.5m insert boom (for 21m Ultra Long attachment)	—	○	—	○	—
	NEXT stand for 2.4m insert boom (for 25m Ultra Long attachment)	—	—	—	—	○
	Additional storage box	○	○	●	●	●
	Bucket cylinder guard	○	●	●	●	●
	RAL colour	○	○	○	○	○
KOMEXS	●	●	●	●	●	

*The air conditioning system on this machine contains fluorinated greenhouse gas HFC-134a (GWP 1430). Quantity of gas 1.0 kg (CO₂ equivalent 1.5 t).

SK350D^{LC} SK350DLC-11E



Engine

Model	ISUZU 6HK1
Type	Four-stroke 6 cylinder water-cooled direct injection turbo charger (with intercooler) diesel engine. (Stage V-compliant engine)
No. of cylinders	6
Bore and stroke	115 mm x 125 mm
Displacement	7,790 mL
Rated power output	210kW / 1,900min ⁻¹ (ISO 14396 : Without fan)
Max. torque	1,080N·m / 1,500min ⁻¹ (ISO 14396 : Without fan)



Hydraulic system

Pump	
Type	Two variable displacement piston pumps + extra pump + pilot pump
Max. discharge flow	2 × 294 L/min 1 × 44.3 L/min, 1 × 19 L/min
Relief valve setting	
Boom, arm and bucket	31.4 MPa
Power boost	34.3 MPa (for Separate boom)
Travel circuit	31.4 MPa
Swing circuit	29.0 MPa
Control circuit	5.0 MPa
Nibbler (Crusher) circuit	31.4 MPa (Open & Close) 20.6 MPa (Rotation)
Pilot control pump	Gear type
Main control valves	8+2-spool
Oil cooler	Air cooled type



Swing system

Swing motor	One fixed displacement piston motor
Brake	Hydraulic; locking automatically when the swing control lever is in the neutral position
Parking brake	Wet multiple plate
Swing speed	6.0 min ⁻¹ (Ultra long attachment) 10 min ⁻¹ (Separate boom)
Tail swing radius	3,600 mm
Swing torque	120 kN·m



Travel system

Travel motors	Variable displacement axial piston motor × 2
Travel brakes	Hydraulic brake
Parking brakes	Wet multiple plate
Travel shoes	48 each side
Travel speed (high / low)	5.6 / 3.3km/h
Drawbar pulling force	281 kN (SAE)
Gradeability	70% {35°}



Cab & control

Cab
All-weather, sound-suppressed steel cab mounted on the silicon-sealed viscous mounts and equipped with a heavy, insulated floor mat Demolition spec cab with tilting function (30°)

Control
Two hand levers and two foot pedals for travel Two hand levers and one foot pedal for excavating and swing Electric rotary-type engine throttle

Noise levels	
External	106 dB(A) (2000/14/EC)
Operator	73 dB(A) (ISO 6396)
Vibration levels	
Hand/arm*	≤ 2.5 m/s ²
Body*	≤ 0.5 m/s ²

* For the risk assessment according to 2002/44/EC, refer to ISO/TR 25398: 2006.



Boom, arm & bucket

bore x stroke (mm)

Attachment type	NEXT Ultra long attachment
Boom cylinders	170 × 1,505
Jib cylinders	140 × 1,210
Arm cylinder	170 × 1,210
Bucket cylinder	125 × 1,200
Attachment type	Separate attachment
Boom cylinders	170 × 1,505
Jib cylinder	240 × 1,317
Arm cylinder	170 × 1,788
Bucket cylinder	150 × 1,193



Refilling capacities & lubrications

Fuel tank	503 L
Cooling system	41.4 L
Engine oil	48.6 L
Travel reduction gear	2 × 8.0 L
Swing reduction gear	7.4 L
Hydraulic oil tank	245 L tank oil level
	410 L hydraulic system
DEF/Urea tank	83 L

Operating weight & ground pressure

Attachment Type	NEXT Ultra long attachment*	Separate attachment*
	6.1 m arm (21 m height)	
Operating Weight	45,300 kg	45,700 kg
Ground Pressure	85 kPa	86 kPa

* Measured with max tool weight

Engine

Model	ISUZU 6HK1
Type	Four-stroke 6 cylinder water-cooled direct injection turbo charger (with intercooler) diesel engine. (Stage V-compliant engine)
No. of cylinders	6
Bore and stroke	115 mm x 125 mm
Displacement	7,790 mL
Rated power output	210kW / 1,900min ⁻¹ (ISO 14396 : Without fan)
Max. torque	1,080N·m / 1,500min ⁻¹ (ISO 14396 : Without fan)

Hydraulic system

Pump	
Type	Two variable displacement piston pumps + extra pump + pilot pump
Max. discharge flow	2 × 294 L/min 1 × 44.3 L/min, 1 × 19 L/min
Relief valve setting	
Boom, arm and bucket	31.4 MPa
Power boost	34.3 MPa (for Separate boom)
Travel circuit	31.4 MPa
Swing circuit	29.0 MPa
Control circuit	5.0 MPa
Nibbler (Crusher) circuit	31.4 MPa (Open & Close) 20.6 MPa (Rotation)
Pilot control pump	Gear type
Main control valves	8+2-spool
Oil cooler	Air cooled type

Swing system

Swing motor	One fixed displacement piston motor
Brake	Hydraulic; locking automatically when the swing control lever is in the neutral position
Parking brake	Wet multiple plate
Swing speed	6.0 min ⁻¹ (Ultra long attachment) 10 min ⁻¹ (Separate boom)
Tail swing radius	3,600 mm
Swing torque	120 kN·m

Travel system

Travel motors	Variable displacement axial piston motor × 2
Travel brakes	Hydraulic brake
Parking brakes	Wet multiple plate
Travel shoes	48 each side
Travel speed (high / low)	5.6 / 3.3km/h
Drawbar pulling force	278 kN (SAE)
Gradeability	70% {35°}

Cab & control

Cab	
All-weather, sound-suppressed steel cab mounted on the silicon-sealed viscous mounts and equipped with a heavy, insulated floor mat Demolition spec cab with tilting function (30°)	
Control	
Two hand levers and two foot pedals for travel Two hand levers and one foot pedal for excavating and swing Electric rotary-type engine throttle	
Noise levels	
External	106 dB(A) (2000/14/EC)
Operator	73 dB(A) (ISO 6396)
Vibration levels	
Hand/arm*	≤2.5 m/s ²
Body*	≤0.5 m/s ²

* For the risk assessment according to 2002/44/EC, refer to ISO/TR 25398: 2006.

Boom, arm & bucket

bore x stroke (mm)

Attachment type	NEXT Ultra long attachment
Boom cylinders	170 × 1,505
Jib cylinders	140 × 1,210
Arm cylinder	170 × 1,210
Bucket cylinder	125 × 1,200
Attachment type	Separate attachment
Boom cylinders	170 × 1,505
Jib cylinder	240 × 1,317
Arm cylinder	170 × 1,788
Bucket cylinder	150 × 1,193

Refilling capacities & lubrications

Fuel tank	503 L
Cooling system	41.4 L
Engine oil	48.6 L
Travel reduction gear	2 × 8.0 L
Swing reduction gear	7.4 L
Hydraulic oil tank	245 L tank oil level
	410 L hydraulic system
DEF/Urea tank	83 L

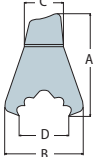
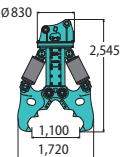
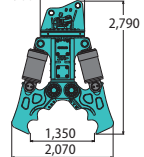
Operating weight & ground pressure

Attachment Type	NEXT Ultra long attachment*		Separate attachment*
	6.1 m arm (21 m height)	8.7 m arm (25 m height)	
Operating Weight	49,900 kg	50,300 kg	49,900 kg
Ground Pressure	93 kPa	94 kPa	93 kPa

* Measured with max tool weight

Attachments

Nibbler

Model		KR1100TPR-2	KR1350TPR-40	
Weight	kg	2,600	3,800	
Dimensions	 <p>A Overall length B Width C Diameter D Jaw opening width</p>			
	Cutter length	mm	200	200
Crushing force	Tip	kN	950	1,210
	Center	kN	1,550	1,770
Assemble dimensions	Arm top width	mm	325	380
	Pin diameter	mm	80	90
Working hydraulic pressure	MPa	34.3*	31.4	

Note: Units follow the International System of Units (SI).

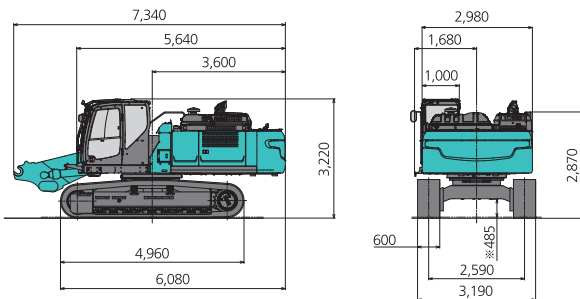
*Max hydraulic pressure of Nibbler/ Max hydraulic pressure of base machine is different.

Dimensions

SK350D_{LC} ※ Excluding height of grouser

Dimensions (base machine + base boom)

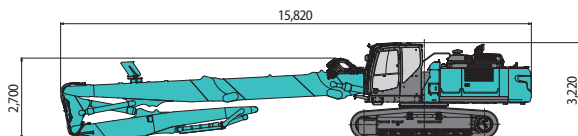
Unit: mm



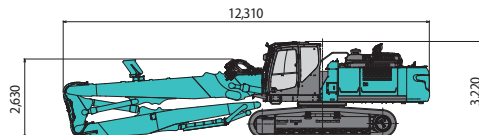
Assembled machine dimensions

Unit: mm

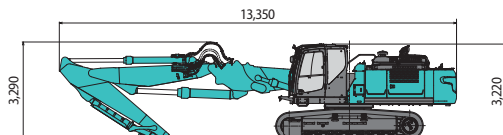
- NEXT Ultra long attachment specification : 6.1m arm + 3.5m boom insert



- NEXT Ultra long attachment specification : 6.1m arm



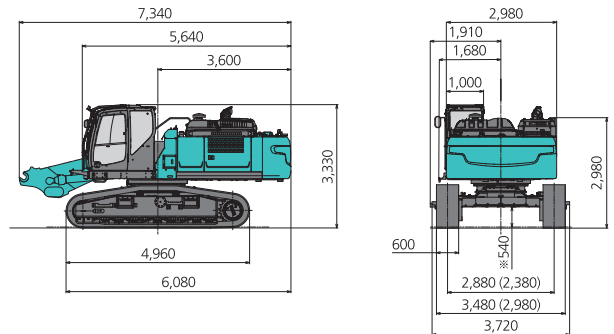
- NEXT Separate boom specification



SK400D_{LC} ※ Excluding height of grouser

Dimensions (base machine + base boom)

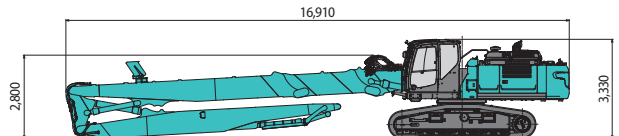
Unit: mm



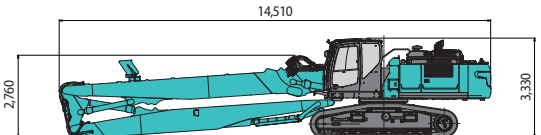
Assembled machine dimensions

Unit: mm

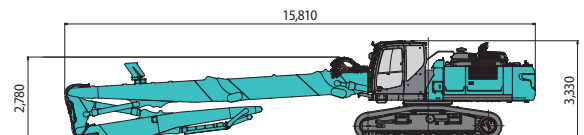
- NEXT Ultra long attachment specification : 8.7m arm + 2.4m boom insert



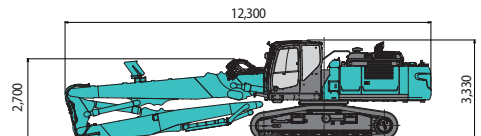
- NEXT Ultra long attachment specification : 8.7m arm



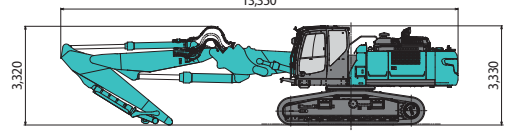
- NEXT Ultra long attachment specification : 6.1m arm + 3.5m boom insert



- NEXT Ultra long attachment specification : 6.1m arm



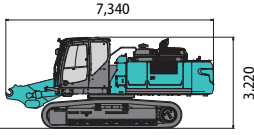
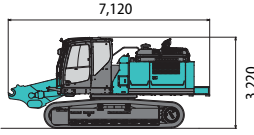
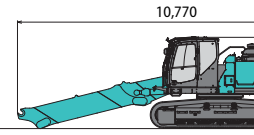
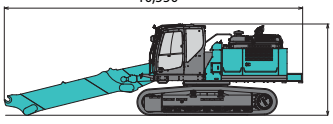
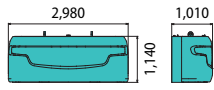
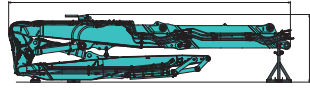
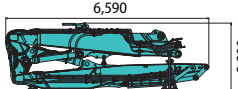
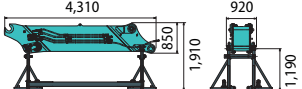
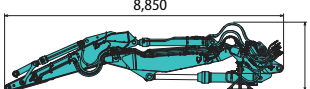
- NEXT Separate boom specification



Disassembled dimensions and weight

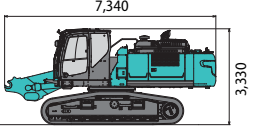
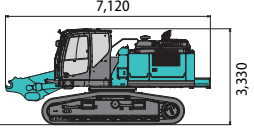
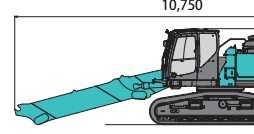
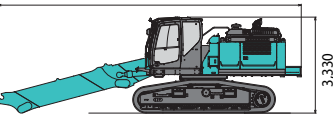
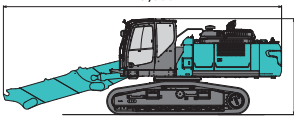
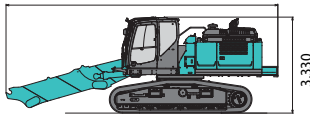
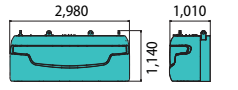
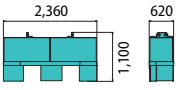


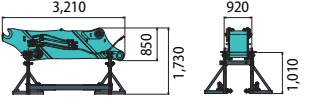
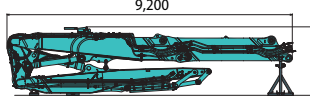
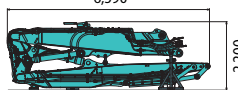
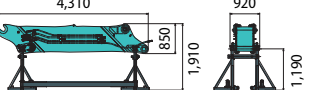
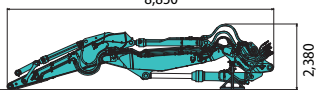
SK350D_{LC}

Unit: mm

<p>Base machine + base boom</p>  <p>Weight: 35,000 kg</p>	<p>Base machine + base boom (without counterweight)</p>  <p>Weight: 25,500 kg</p>	<p>Base machine + base boom + boom insert</p>  <p>Weight: 36,700 kg</p>
<p>Base machine + base boom + boom insert (without counterweight)</p>  <p>Weight: 27,200 kg</p>	<p>Counterweight (including bolt)</p>  <p>Weight: 9,490 kg</p>	<p>NEXT Ultra long attachment : 6.1m arm + 3.5m boom insert (including enclosed stand)</p>  <p>Overall width: 1,770 mm Weight: 7,790 kg</p>
<p>NEXT Ultra long attachment : 6.1m arm (including enclosed stand)</p>  <p>Overall width: 1,770 mm Weight: 6,070 kg</p>	<p>NEXT Ultra long attachment : 3.5m boom insert (including optional stand)</p>  <p>Overall width: 1,770 mm Weight: 1,990 kg</p>	<p>NEXT Separate boom (including enclosed stand)</p>  <p>Overall width: 1,770 mm Weight: 6,760 kg</p>

SK400D_{LC}

Unit: mm

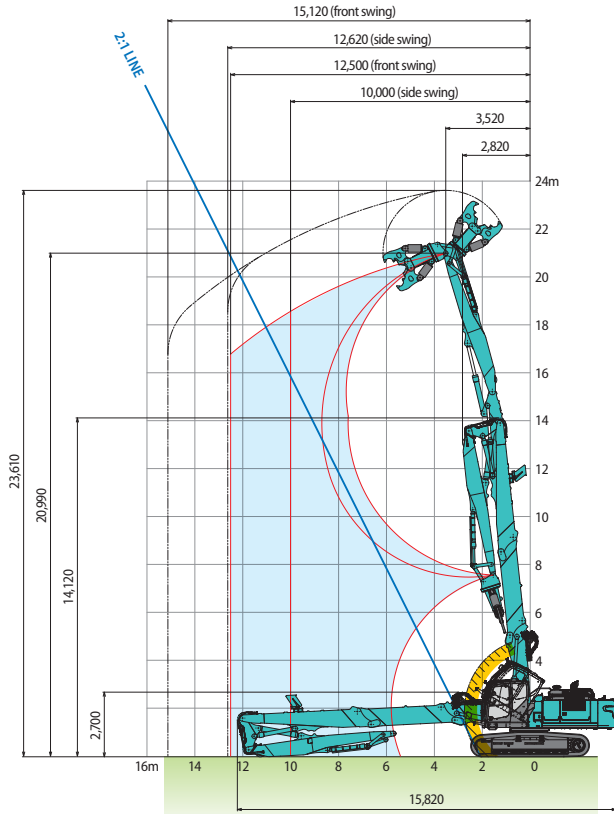
<p>Base machine + base boom</p>  <p>Weight: 39,200 kg</p>	<p>Base machine + base boom (without counterweight)</p>  <p>Weight: 29,100 kg</p>	<p>Base machine + base boom + 3.5m boom insert</p>  <p>Weight: 40,900 kg</p>
<p>Base machine + base boom + 3.5m boom insert (without counterweight)</p>  <p>Weight: 30,800 kg</p>	<p>Base machine + base boom + 2.4m boom insert</p>  <p>Weight: 40,600 kg</p>	<p>Base machine + base boom + 2.4m boom insert (without counterweight)</p>  <p>Weight: 30,500 kg</p>
<p>Counterweight Case (including bolt)</p>  <p>Weight: 3,270 kg</p>	<p>Counterweight (including bolt)</p>  <p>Weight: 6,860 kg</p>	<p>NEXT Ultra long attachment : 8.7m arm + 2.4m boom insert (including enclosed stand)</p>  <p>Overall width: 1,770 mm Weight: 8,610 kg</p>
<p>NEXT Ultra long attachment : 8.7m arm (including enclosed stand)</p>  <p>Overall width: 1,770 mm Weight: 7,160 kg</p>	<p>NEXT Ultra long attachment : 2.4m boom insert (including optional stand)</p>  <p>Overall width: 1,770 mm Weight: 1,690 kg</p>	<p>NEXT Ultra long attachment : 6.1m arm + 3.5m boom insert (including enclosed stand)</p>  <p>Overall width: 1,770 mm Weight: 7,790 kg</p>
<p>NEXT Ultra long attachment : 6.1m arm (including enclosed stand)</p>  <p>Overall width: 1,770 mm Weight: 6,070 kg</p>	<p>NEXT Ultra long attachment : 3.5m boom insert (including optional stand)</p>  <p>Overall width: 1,770 mm Weight: 1,990 kg</p>	<p>NEXT Separate boom (including enclosed stand)</p>  <p>Overall width: 1,770 mm Weight: 6,760 kg</p>



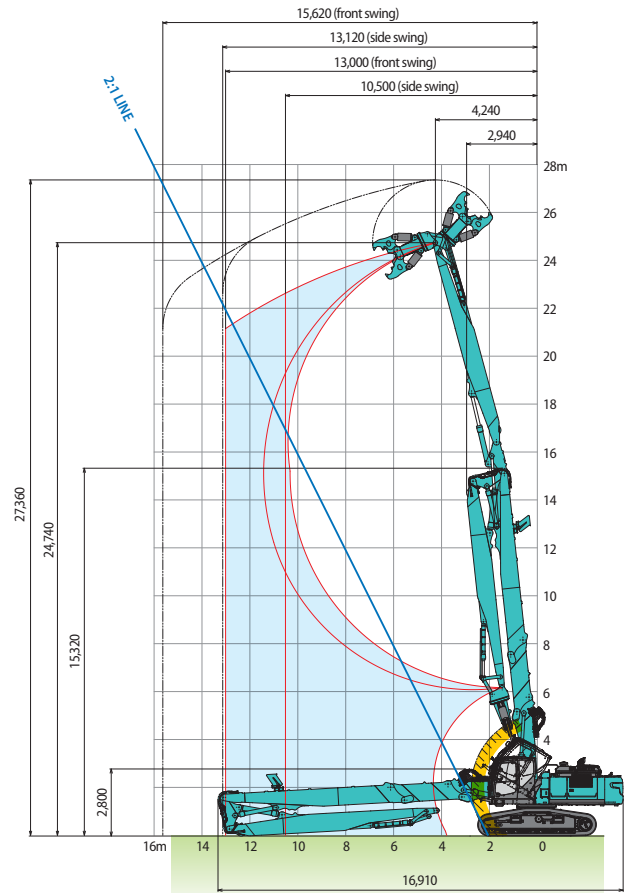
Working ranges

NEXT Ultra long attachment specification

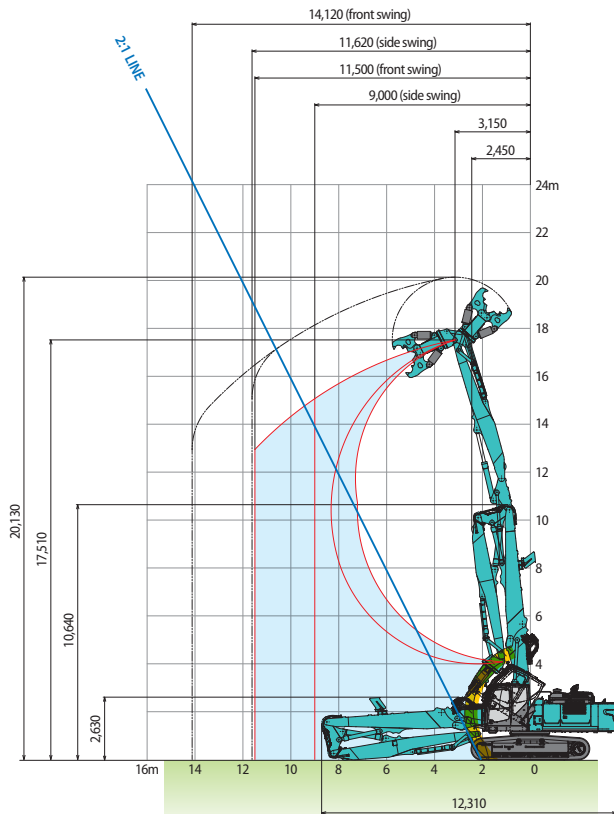
SK350D_{LC} 6.1m arm + 3.5m boom insert Max. tool weight = 2,600kg



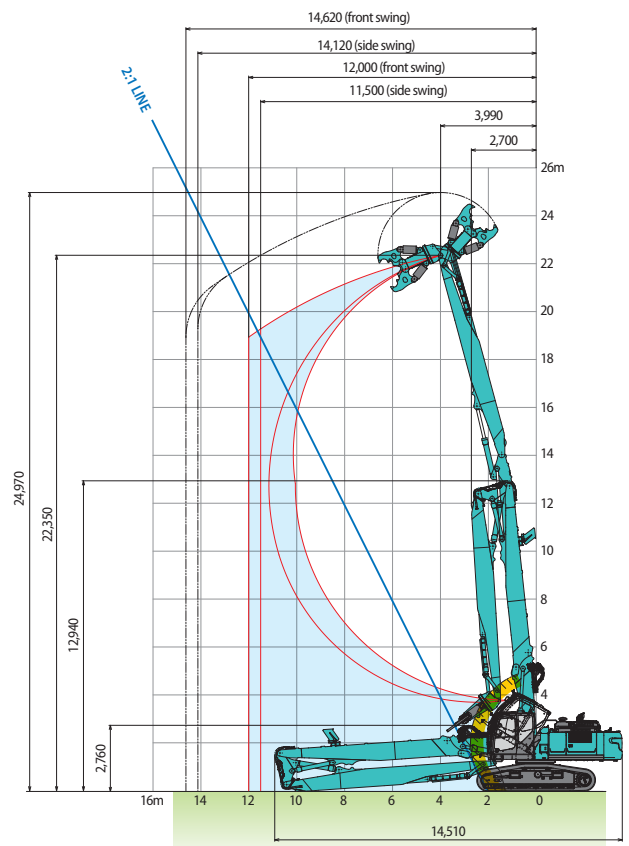
SK400D_{LC} 8.7m arm + 2.4m boom insert Max. tool weight = 2,600kg



SK350D_{LC} 6.1m arm Max. tool weight = 2,600kg



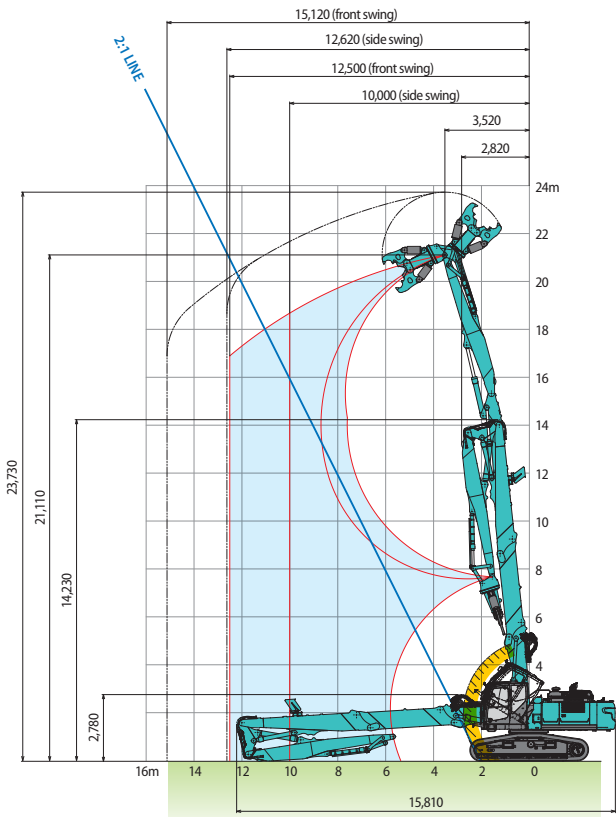
SK400D_{LC} 8.7m arm Max. tool weight = 2,600kg



Unit: mm

SK400D.LC 6.1m arm + 3.5m boom insert

Max. tool weight = 3,000kg

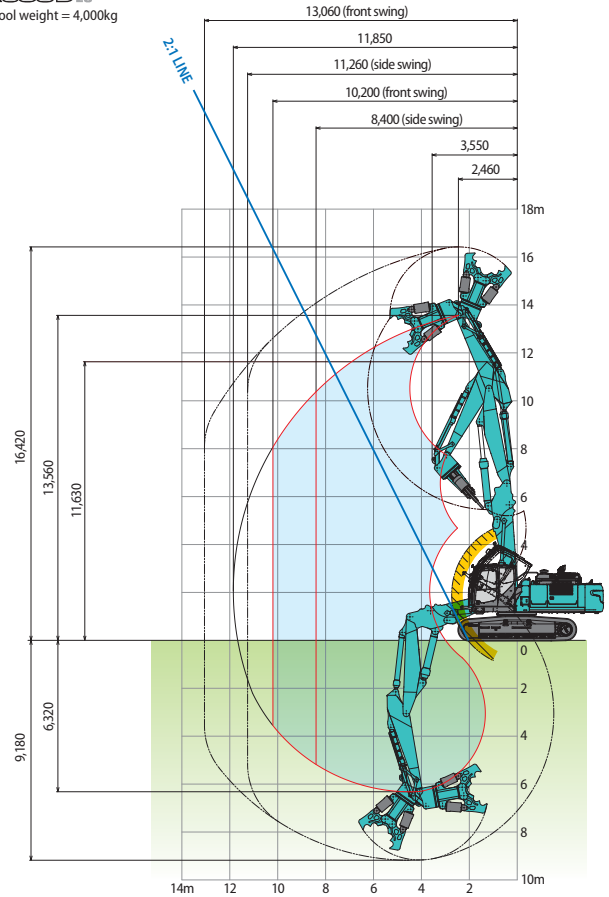


NEXT Separate boom specification

Unit: mm

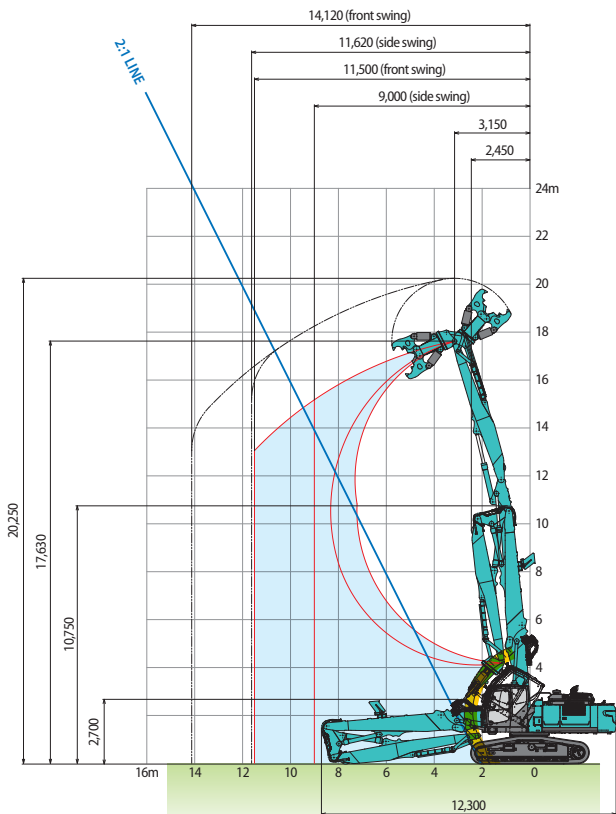
SK350D.LC

Max. tool weight = 4,000kg



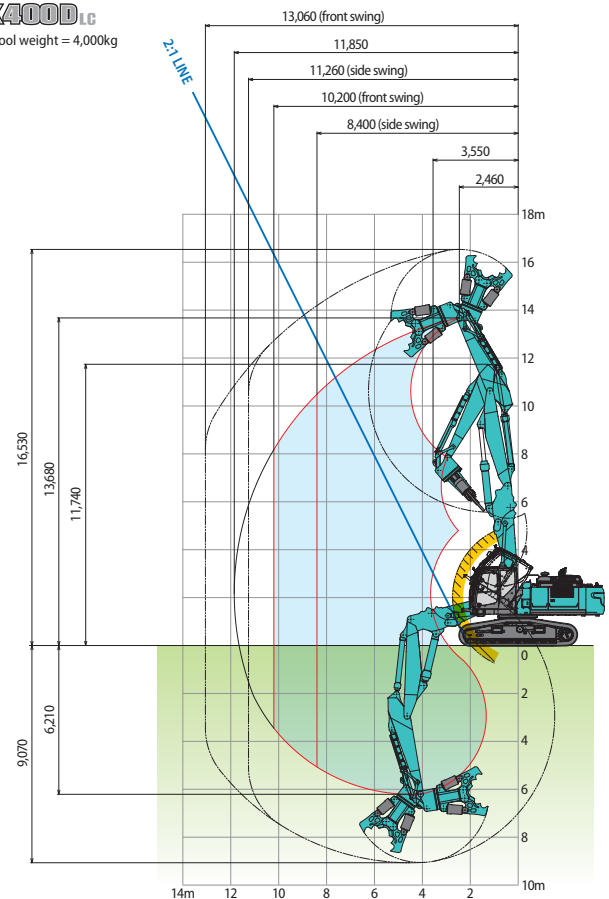
SK400D.LC 6.1m arm

Max. tool weight = 3,000kg



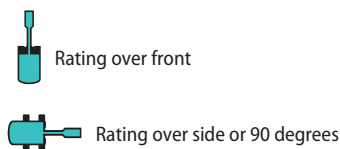
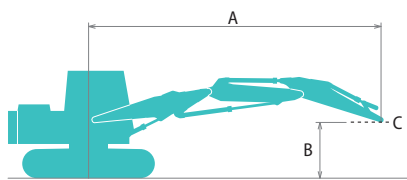
SK400D.LC

Max. tool weight = 4,000kg



*Cab interference prevention system operating area.

Lift capacities



A – Reach from swing centerline to arm top
 B – Arm top pin height above/below ground
 C – Lift point
 Relief valve setting: 34.3 MPa

SK350D.LC

Unit : kg

		Boom: Separate boom		Arm: 3.3 m		Front attachment: without		Counterweight: 9,460 kg		Shoe: 600 mm (Heavy Lift)				At Max. Reach		Radius		
B Height	Radius A	1.5 m		3.0 m		4.5 m		6.0 m		7.5 m		9.0 m		10.5 m				
13.5 m																*13,040	*13,040	2.88 m
12.0 m																*7,570	*7,570	6.41 m
10.5 m																*6,180	*6,180	8.31 m
9.0 m																*5,510	4,850	9.61 m
7.5 m																*5,140	3,980	10.53 m
6.0 m																*4,920	3,460	11.18 m
4.5 m																*4,860	3,150	11.60 m
3.0 m																*4,880	2,990	11.82 m
1.5 m																*5,000	2,940	11.84 m
G.L.																*4,930	3,020	11.67 m
-1.5 m																*4,070	3,230	11.29 m
-3.0 m																*3,880	3,670	10.58 m
-4.5 m																*4,730	4,570	9.27 m
-6.0 m																*7,650	*7,650	6.52 m

SK400D.LC

Unit : kg

		Boom: Separate boom		Arm: 3.3 m		Front attachment: without		Counterweight: 10,100 kg		Shoe: 600 mm (Heavy Lift)				At Max. Reach		Radius		
B Height	Radius A	1.5 m		3.0 m		4.5 m		6.0 m		7.5 m		9.0 m		10.5 m				
13.5 m																*12,000	*12,000	3.30 m
12.0 m																*7,420	*7,420	6.58 m
10.5 m																*6,120	*6,120	8.42 m
9.0 m																*5,480	*5,480	9.69 m
7.5 m																*7,890	*7,890	10.59 m
6.0 m																*4,930	4,600	11.22 m
4.5 m																*4,860	4,250	11.63 m
3.0 m																*4,890	4,070	11.83 m
1.5 m																*5,010	4,040	11.83 m
G.L.																*4,880	4,140	11.65 m
-1.5 m																*4,000	*4,000	11.25 m
-3.0 m																*3,930	*3,930	10.51 m
-4.5 m																*4,820	*4,820	9.14 m
-6.0 m																*8,360	*8,360	6.09 m

Notes:

- Do not attempt to lift or hold any load that is greater than these lift capacities at their specified lift point radius and height. Weight of all accessories must be deducted from the above lift capacities.
- Lift capacities are based on machine standing on level, firm, and uniform ground. User must make allowance for job conditions such as soft or uneven ground out of level conditions, side loads, sudden stopping of loads, hazardous conditions, experience of personnel, etc.
- Arm top pin is defined as lift point.
- The above lift capacities are in compliance with SAE J/ISO 10567. They do not exceed 87 % of hydraulic lift capacity or 75 % of tipping load. Lifting capacities marked with an asterisk (*) are limited by hydraulic capacity rather than tipping load.
- Operator should be fully acquainted with the operator's and Maintenance Instructions before operating this machine and rules for safe operation of equipment should be adhered to at all times.
- Lift capacities apply to only machine as originally manufactured and normally equipped by KOBELCO CONSTRUCTION MACHINERY CO., LTD.
- This table cannot be applied for high reach demolition machines.

Note: Bluetooth® is a registered trademark of the Bluetooth SIG Inc.

Note: This catalogue may contain attachments and optional equipment that are not available in your area. And it may contain photographs of machines with specifications that differ from those of machines sold in your areas. Please consult your nearest KOBELCO distributor for those items you require. Due to our policy of continuous product improvements all designs and specifications are subject to change without advance notice.

Copyright by **KOBELCO CONSTRUCTION MACHINERY CO., LTD.** No part of this catalogue may be reproduced in any manner without notice.

KOBELCO CONSTRUCTION MACHINERY EUROPE B.V.

Veluwezoom 15
 1327 AE Almere
 The Netherlands
 www.kobelco-europe.com

Enquiries To: