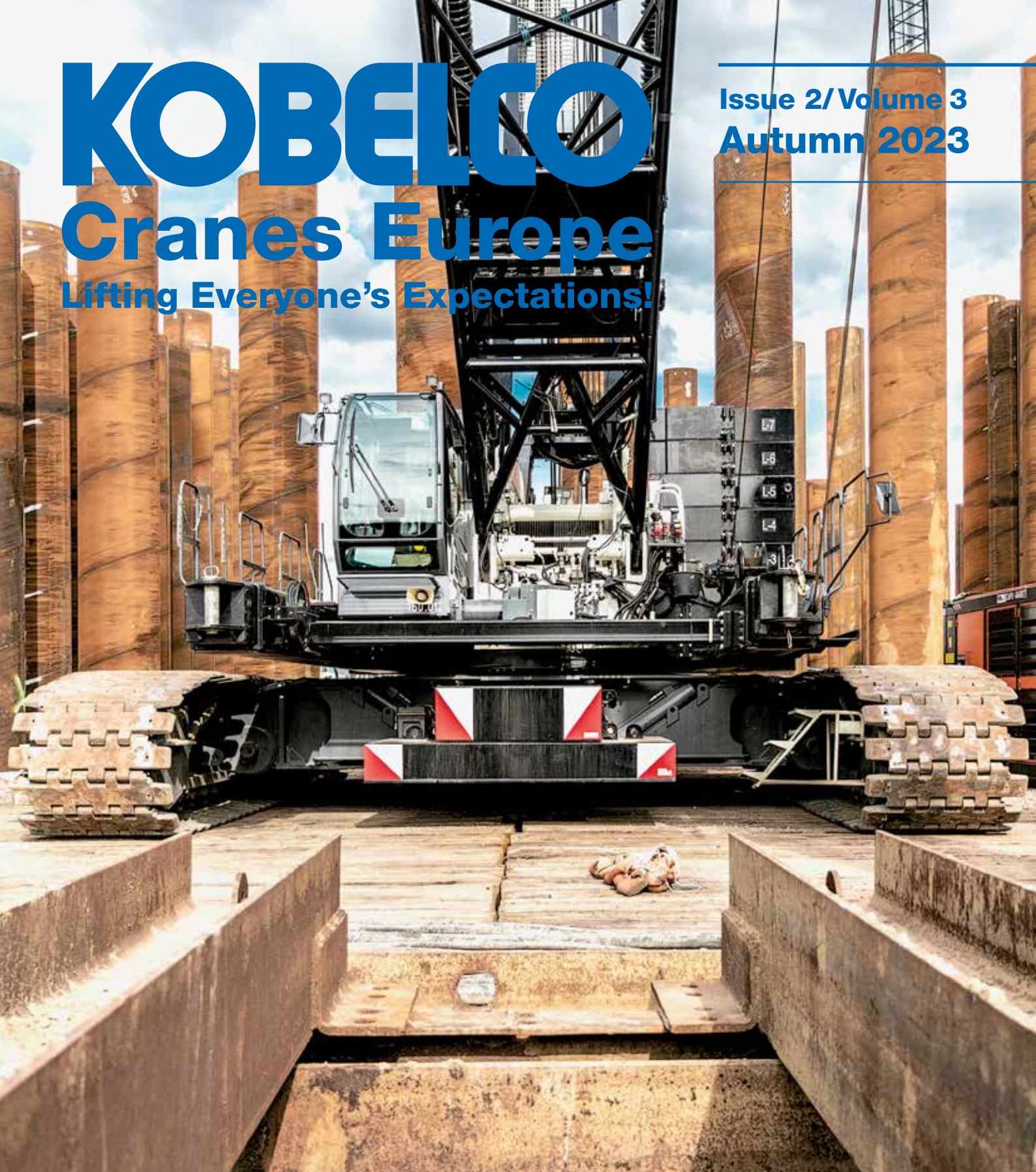


# KOBELCO

## Cranes Europe

Lifting Everyone's Expectations!

Issue 2/Volume 3  
Autumn 2023



### SPECIAL REPORT:

**New G Series  
ConExpo 2023**

### PROJECTS:

**New Kobelco HQ  
Royerssluis  
Swan Energy Park**

### CRANES:

**CKE800G-3  
CKE2500G-2  
And more...**



# KOBELCO

Lifting Everyone's Expectations!

## KOBELCO G-SERIES

- EU Stage 5 compliant power plant
- Up to 25% fuel consumption thanks to G-mode: G-Engine, G-winch and Auto-Idle-Stop
- Ergonomic, luxurious, spacious cab with joysticks
- Dual pump flow for clamshell, bucket or material handling\*
- Efficient transport
- Fast assembly / disassembly
- Tractor type crawlers\*
- Over-swing preventative device\*
- Low maintenance
- Excellent reliability
- Worldwide service network

\*optional items

[www.kobelco-europe.com](http://www.kobelco-europe.com)

KOBELCO CONSTRUCTION MACHINERY EUROPE BV  
FOR EUROPE, RUSSIA, CIS  
TEL: +31-(0)36-549-5510  
[Jos.verhulst@kobelco.com](mailto:Jos.verhulst@kobelco.com)

KOBELCO CONSTRUCTION MACHINERY EUROPE BV  
FOR UK, IRELAND AND SOUTH AFRICA  
TEL: +44-(0)1342-301122  
[Mark.evans@kobelco.com](mailto:Mark.evans@kobelco.com)

# CONTENTS

05

### Comment

Masakazu Usami, Division Director - Cranes, Kobelco Construction Machinery Europe, previews our latest issue.



06

### News

A look at some of the most exciting projects KCME - Crane Division's customers are helping deliver across the EAME region.



08

### New G Series European launch

European launch for Kobelco's new Tier 5/Stage V compliant G-4 series crawler cranes, with the CKE900G-4, CKE1350G-4, and CKE2500G-4 now available.



10

### Van't Hek / New Kobelco HQ

Van't Hek's CKE800G plays a key role in delivering our new European headquarters in Lelystad, Netherlands.



14

### Artes / Royerssluis

Artes Group deploys three Kobelco crawler cranes during foundation work to expand Antwerp's historic Royers Lock.



18

### SilSoil: Contractor Spotlight

Founded in 1995, Spain's SilSoil has steadily expanded its operations to cover three continents while solidifying its presence in the European crane and lifting market.



20

### Q Crane & Plant Hire / Energy park expansion

Q Crane & Plant Hire's CKE110G-2 and CKE1350-1F install combi wall during Swan Energy Park expansion for SouthBay Civil Engineering.



23

### Contractor spotlight: BRAET

Belgium's BRAET is a multidisciplinary contractor and project management company skilled in the delivery of large and medium sized projects.



24

### ConExpo 2023

Kobelco's "repowered" G-4 series crawler cranes were the stars of Kobelco Construction USA's stand at this year's ConExpo.



26

### Stay in touch...

Join Kobelco Cranes on social media and stay up-to-date with all the latest news and competitions!



COVER: Artes Depret's CKE2500G-2 PDS (Pile Driving Special).



# Quality used crane finder service

We have a wide selection of used cranes available.  
We are also happy to facilitate the sale of any used machines on your behalf

If you have a used crane for sale, or are looking to buy a used crane contact:



**Jos Verhulst Kobelco Construction Machinery Europe B.V. (The Netherlands)**  
T: +31-36-549-5510 M: +31-(0)6-5346-8439  
Veluwezoom 15, 1327 AE Almere, The Netherlands  
jos.verhulst@kobelco.com kobelco-europe.com/products-cranes/

**Kobelco Construction Machinery United Kingdom UK, Ireland & Africa**  
T: +44 (0) 1342 301122 F: Fax: +44 (0) 1342 326987  
Unit 9, The Felbridge Centre, East Grinstead, West Sussex, RH19 1XP  
kobelco-europe.com/products-cranes/



**Masakazu Usami**  
Division Director Cranes  
(Kobelco Construction Machinery Europe)

Hello and welcome to the latest issue of Kobelco Construction Machinery Europe - Crane Division's customer magazine.

Inside, we've thrown the spotlight on the crucial role our valued customers and their Kobelco cranes are playing in delivering some of EAME's most important infrastructure projects, including the construction of Kobelco Construction Machinery Europe's new headquarters in Lelystad, the Netherlands, with the help of long-standing customer Van't Hek, and its CKE900G.

Elsewhere you can read about the launch of our new G Series crawler cranes, these include the 100-tonne CKE900G-4, the 150-tonne capacity CKE1350G-4, and the 250-tonne capacity CKE2500G-4.

If you are visiting Intermat (Paris, France, Apr 24-27), or Vertikal Days (Newark, UK, 11-12 Sept), be sure to drop by our stand to get your first glimpse of these new machines "in the iron".

Water is one of this issue's themes, with a report from Antwerp, Belgium on the expansion of the city's historic Royers Lock by Artes Group, while in the UK we look at the expansion of Shepard Offshore's Swan Energy Park on the North Bank of the River Tyne by Q Crane & Plant Hire.

You'll also find articles showcasing two of our most longstanding customers - Spain's Silsoil and Belgium's Braet - alongside a look back at this year's ConExpo-Con/Agg show in the US.

I hope you enjoy reading it as much as I have.



KOBELCO  
CONSTRUCTION  
MACHINERY EUROPE  
B.V. (UK)  
Unit 9, The Felbridge  
Centre, East  
Grinstead, West Sussex  
RH19 1XP, UK  
Tel: +44-1342-301122

KOBELCO  
CONSTRUCTION  
MACHINERY EUROPE  
B.V. (The Netherlands)  
Veluwezoom 15, 1327 AE  
Almere, The Netherlands  
Tel: +31-36-549-5510

KOBELCO  
CONSTRUCTION  
MACHINERY EUROPE  
B.V. (Germany)  
Germany, Austria and  
Switzerland  
Tel: +49 (0)172 7946087

DISTRIBUTORS  
Russian Federation  
FKR Machinery  
105187, Russia, Moscow,  
Room 1, Office 4,  
Mironovskaya Street  
Tel: +7-495-981-4545

Republic of Turkey  
Das Otomotiv ve  
Jeneratör Tic. A.Ş  
Gardenya Plaza 5, Kat: 2

34758 Ataşehir - İstanbul  
- TÜRKİYE  
Tel: +90 216 456 57 05

People's Democratic  
Republic of Algeria  
Manyi Machinery  
Centre des affaires  
AL-Qods, bureau 08-07  
niveau 04 Chéraga Alger  
- Algeria.  
Tel: +213 (0) 21-343-173

HEAD OFFICE - JAPAN  
KOBELCO  
CONSTRUCTION  
MACHINERY CO., LTD  
Tokyo, Japan  
Tel: +81-(0)3-5789-2121



A round-up of some of the most interesting projects happening across the Europe, Africa, and the Middle East region (EAME), and beyond involving Kobelco Construction Equipment Europe - Crane Division's customers and , of course, their cranes!



Delden Crane's 300-tonne capacity Kobelco CKE3000G-2 has been working on the Riverlinx Tunnel project in London for the Riverlinx CJV, a joint venture partnership between the UK's BAM Nuttall, Spain's Ferrovial Construction and South Korea's SK ecoplant. The Secant Bored pile Peanut shaft (shown) was shortlisted in the 'Innovation in Shaft Design & Construction' category of the New Civil Engineer Tunnelling Awards 2022.



VABI - Van Alen Beton Industry - recently acquired two 80-tonne capacity Kobelco crawlers, a CKS800 and a CKE800G for work in Paramaribo, Surinam, with a clamshell bucket for dredging and loading and unloading ships.



Offshore contractor Allseas's fully assembled, 135-tonne capacity CKE1350G-2 crane is lifted onto a transport vessel for delivery to Allseas' Solitaire, one of the largest pipelay vessels in the world.



Northern Ireland's BSG Civil Engineering has used its 60-tonne capacity BM600 during the construction of Northern Ireland Water's £18 million Ards North Wastewater Improvement Project. The project, which is due for completion later this year, will see the rationalization and upgrade of the wastewater collection, treatment, and transfer systems serving the villages of Carrowdore, Ballywhiskin, and Ballywalter on the Ards Peninsula in County Down, Northern Ireland.



Crane rental company Cluysenaar is using two of Herpertz's 100-tonne capacity Kobelco CKE900G-3 crawler cranes during the construction of the €2.31 billion Maasvlakte project at the Port of Rotterdam in the Netherlands. The Maasvlakte is a massive man-made westward extension of the Europoort area and industrial facility within the Port of Rotterdam built on land reclaimed from the North Sea and involves the construction of a new port and supporting infrastructure, including onward transport links, on reclaimed land adjoining the Maasvlakte.

Q Crane & Plant Hire has successfully installed new sluice gate sections at Mode Wheel Locks on the Manchester Ship Canal, a 36-mile-long (58 km) inland waterway in the North West of England linking Manchester to the Irish Sea.

Carried out on behalf of Peel Ports Group for VolkerStevin, the company used its 80-tonne capacity Kobelco CKE800G crawler crane, which was fitted with a 30.5m jib, to remove the old sluice gate sections before lifting the new ones into place.





# New G Series

**The first of Kobelco Construction Machinery's new Tier 5/Stage V compliant G series cranes – the 100-tonne capacity CKE900G-4, the 150-tonne capacity CKE1350G-4, and the 250-capacity CKE2500G-4 – are now available in Europe!**

Created from end user and real job site experiences, Kobelco Construction Machinery's latest G-series models, including the new 100-tonne capacity CKE900G-4, 150-tonne capacity CKE1350G-4, and 250-tonne capacity CKE2500G-4, have been designed incorporating the latest transport, assembly, and operator-friendly concepts.

All new G-4 Series models have also been re-engineered with the Isuzu Tier 5/Stage V compliant engine, known for its reliability, fuel efficiency, and quiet operation.

## **Reliable and operator-friendly cab**

The G Series cab has also been re-designed for an operator-friendly environment taking into consideration comfort, ease of operation, and safety.

The extra-wide full front cab windows offer excellent visibility, while an intuitively-designed Load Moment Indicator (LMI), makes it simple for anyone to quickly master the operation with easily understandable pictograms and a touch screen panel.

Another new addition to Kobelco's G Series operator's cab are

Bluetooth and USB capabilities for peripherals connectivity.

Kobelco has maintained all the previous hydraulic and crane travel systems and other components that have made Kobelco known for being an extremely "operator-friendly" and reliable crane for almost 100 years.

## **Optimized for the job site**

The G-4 Series has also maintained the "value-added" standard features that make Kobelco cranes world leaders, including the LMI, swing limiter, self-erection capabilities, fuel-saving G-Modes, the Kobelco Remote Observation Satellite System, or KCROSS Telematics, and boom and jib commonality.

KCROSS is standard on all new G Series models and is a proprietary system that allows remote monitoring of the unit from the owner's desktop. The system was designed to be as user-friendly as possible, providing daily, weekly, and monthly reports of all of the crane's data in a simple and easy-to-read format.

Besides the standard configuration the CKE1350G-4, and CKE2500G-4 can be fitted with a

fixed jib, heavy fixed jib, and luffing jib, making them suitable for a wide range of working environments and jobs. While an optional free-fall winch is also available for all three models.

The performance of the undercarriage has been enhanced to operate with high ground clearance and outstanding propelling performance while minimizing the overall footprint.

The G-4 models inherited the reliable Kobelco hydraulic control system which has achieved a superior reputation for many years. In order to correspond to specific job site needs, a free-fall winch (optional) is also available.

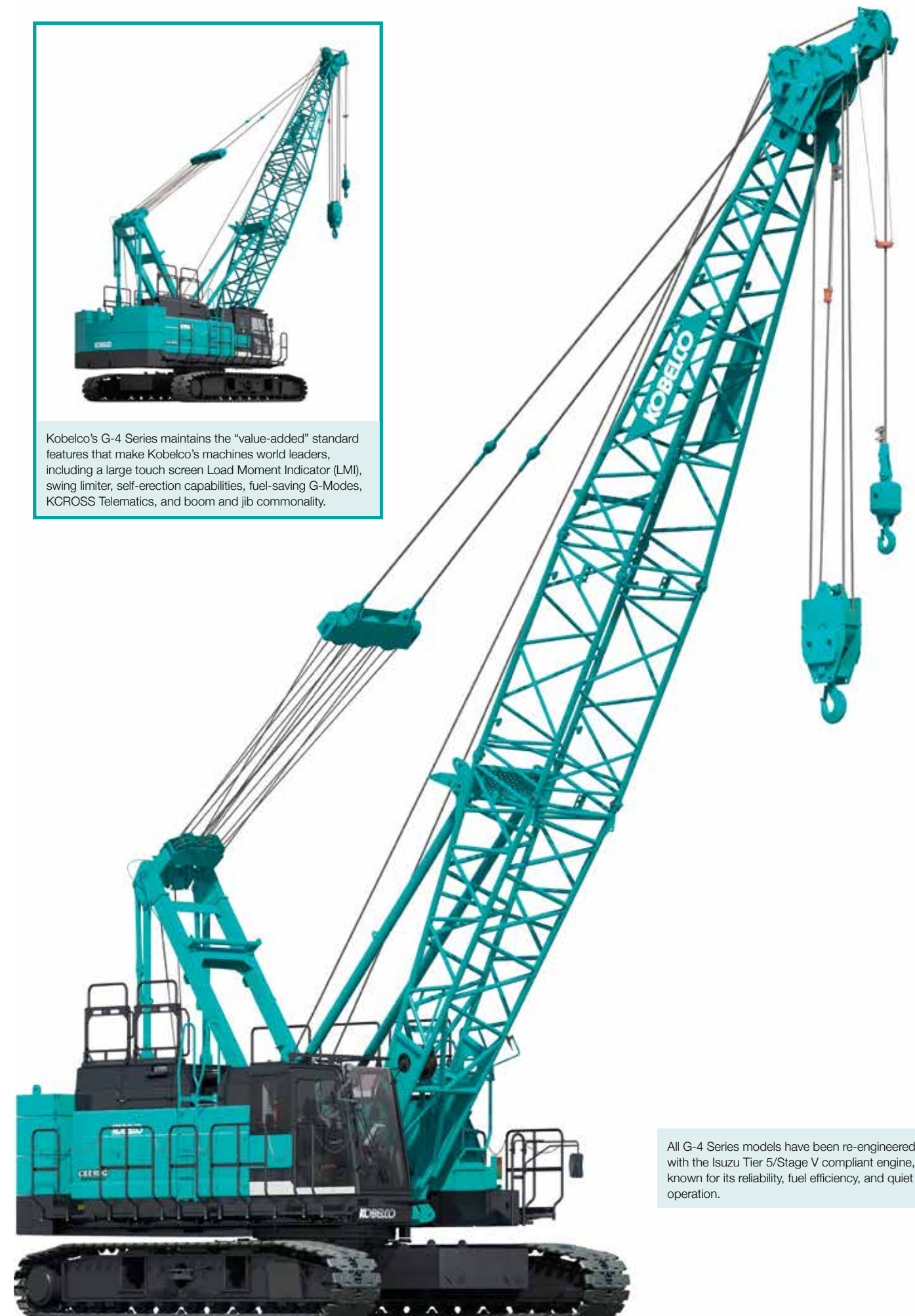
## **Wide variety of attachments**

Various kinds of attachments are available ranging from standard crane configuration, including fixed jib, heavy fixed jib, and luffing jib, which are most suitable for multipurpose works, including luffing jib, for the heaviest lifts.

These attachments make it possible to provide the most suitable solutions in accordance with individual job site requirements.



Kobelco's G-4 Series maintains the "value-added" standard features that make Kobelco's machines world leaders, including a large touch screen Load Moment Indicator (LMI), swing limiter, self-erection capabilities, fuel-saving G-Modes, KCROSS Telematics, and boom and jib commonality.



All G-4 Series models have been re-engineered with the Isuzu Tier 5/Stage V compliant engine, known for its reliability, fuel efficiency, and quiet operation.



# New Kobelco Headquarters



**Kobelco Construction Equipment Europe's new state-of-the-art European headquarters is taking shape in Lelystad, the Netherlands, with the help of long-standing customer Van't Hek, and its CKE900G.**

Kobelco Construction Equipment Europe's new, 17,500m<sup>2</sup> state-of-the-art European headquarters in Lelystad, the Netherlands, will include a parts warehouse, and a training centre with a demonstration area incorporating state-of-the-art facilities alongside offices, a canteen, and communal spaces.

Spearheading construction of the new headquarters is Van't Hek,

part of the family-owned Van't Hek Group, the leading piling company in the Netherlands, and a long-time and much-valued Kobelco Construction Equipment (KCME) – Crane Division customer.

Working for RVB Groep, Van't Hek is using its CKE900G to construct a 30.3 x 16.3m cofferdam using 8.5m-long AZ18-700 sheet piles weighing 1.3 tonnes each. The total length of sheet piling needed



An artist's impression of the new Kobelco Construction Machinery Europe's new headquarters in Lelystad, which will feature a warehouse, training facilities and offices on the 17,500m<sup>2</sup> site.

to complete the works is an impressive 111.3m, with a total weight of over 100 tonnes.

Installing the sheet piling took six days spread over 11 weeks, including a day to transport the CKE900G to and from the job site, one day of scheduled





maintenance, and three weeks of holidays.

To install the piles the CKE900G has been fitted with a 3.43 tonne ICE 18 RF vibratory hammer from Desko, which features a centrifugal force of 850kN, static torque of 0-18kgm, boom lifting

torque of 240kN, amplitude of 12mm, a frequency of 35Hz, and 266kW of drive power.

Other works being carried out by the CKE900G include the installation of the sheet pile anchors and anchor piles, as well as some above-ground steel and

construction work. During the construction phase, the CKE900G was positioned in the centre of the cofferdam 'pit' and fitted with a 36.6m-long boom.

"In this configuration, a working radius of up to 26m is possible, according to the CKE900G Load

Chart, but was not needed because the work was being carried out with the KOBELCO crane being operated from the centre of the Cofferdam, which meant that the CKE900G had plenty of remaining load capacity, which can easily be seen in the photographs," said Van't Hek.



The official groundbreaking ceremony for KCME's new headquarters was performed by (left to right) Karin van Dijk, General Manager Human Resources & Corporate Affairs, architect Michiel Kobussen, Alexis van Oven, municipality of Lelystad, Dennis Grimbergen Alderman of Lelystad, Makoto Kato, Managing Director KCME, Akira Yamamoto CEO KCM, Willem Jan van de Worp, Board Member Groothuis, Hideki Kinugawa, Head of Marketing Business Unit and Head of Excavator Sales & Marketing Division KCM, in October this year.





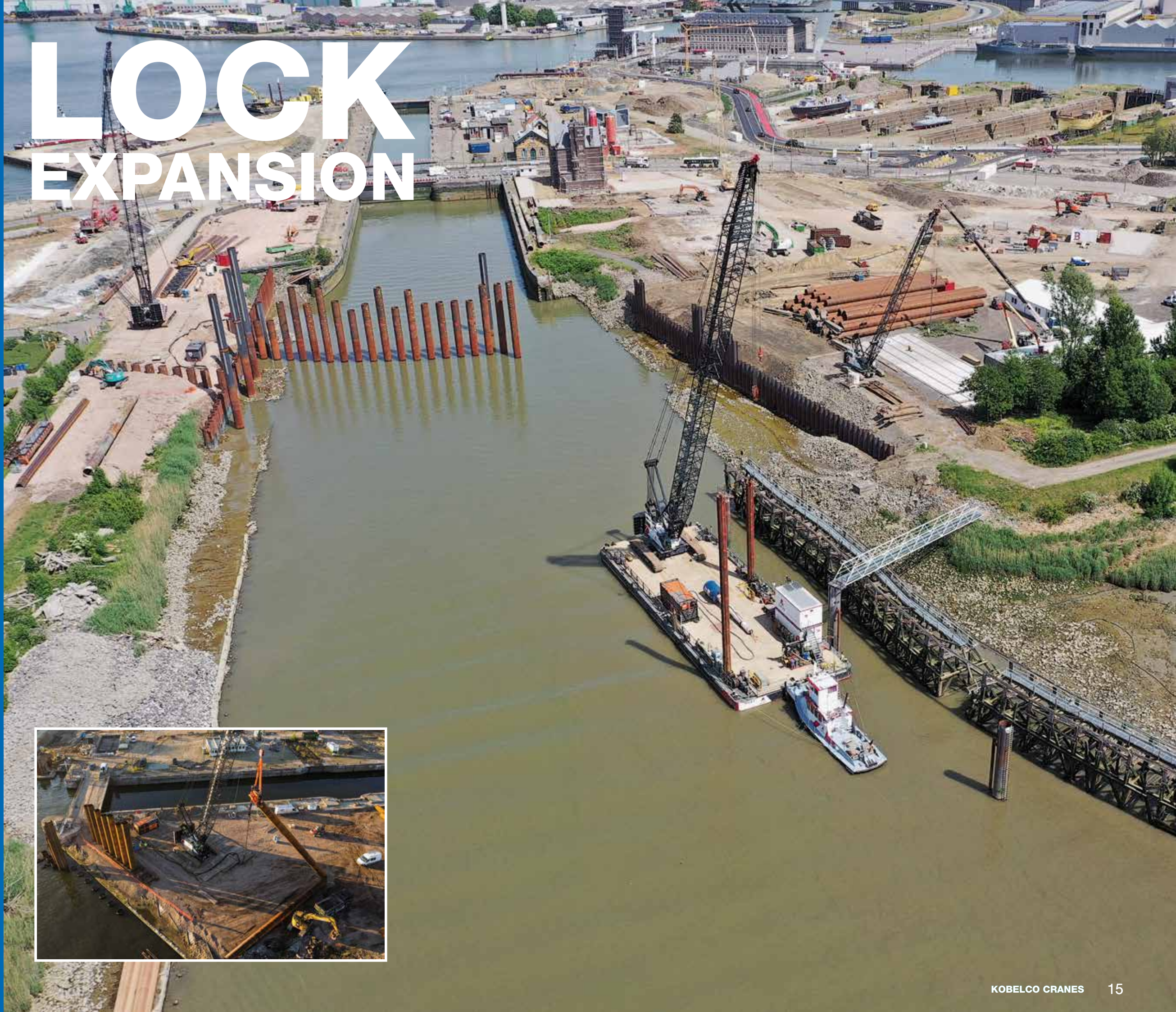
## Artes Group deploys three Kobelco crawler cranes during foundation work to expand Antwerp's historic Royers Lock

Three Kobelco crawler cranes have played a pivotal role in the expansion of the historic Royers Lock in Antwerp, Belgium. The state-of-the-art cranes, operated by the renowned Artes Group's Roegiers and Depret divisions, have been pivotal in the foundation work and construction process, helping facilitate the transformation of the lock into a high-performance inland navigation lock capable of accommodating modern inland vessels.

This economically strategic project, which is being undertaken by the contractors consortium Rinkonfen (consisting of Boskalis, Mobilis TBI, CIT Blaton, Artes Group and Stadsbader NV), began in October 2021 and is scheduled to conclude in late 2028, aims to enhance the country's transportation capabilities and contribute to a more sustainable mode of freight transport throughout the region.

The Royers Lock (Royerssluis in Flemish) is an integral shipping connection between the Scheldt and the Albert Canal and has a rich history dating back to its construction in 1893. Initially designed for sea-going vessels, it now primarily serves river-going boats. With traffic increasing and the need to accommodate larger ocean-going ships paramount, the expansion of the lock became imperative.

# LOCK EXPANSION





Named after the esteemed Antwerp city engineer Gustaaf Roeyers, the lock spans an impressive 180m by 22m. Once complete, the new lock will be considerably larger: 230m long by 36m wide.

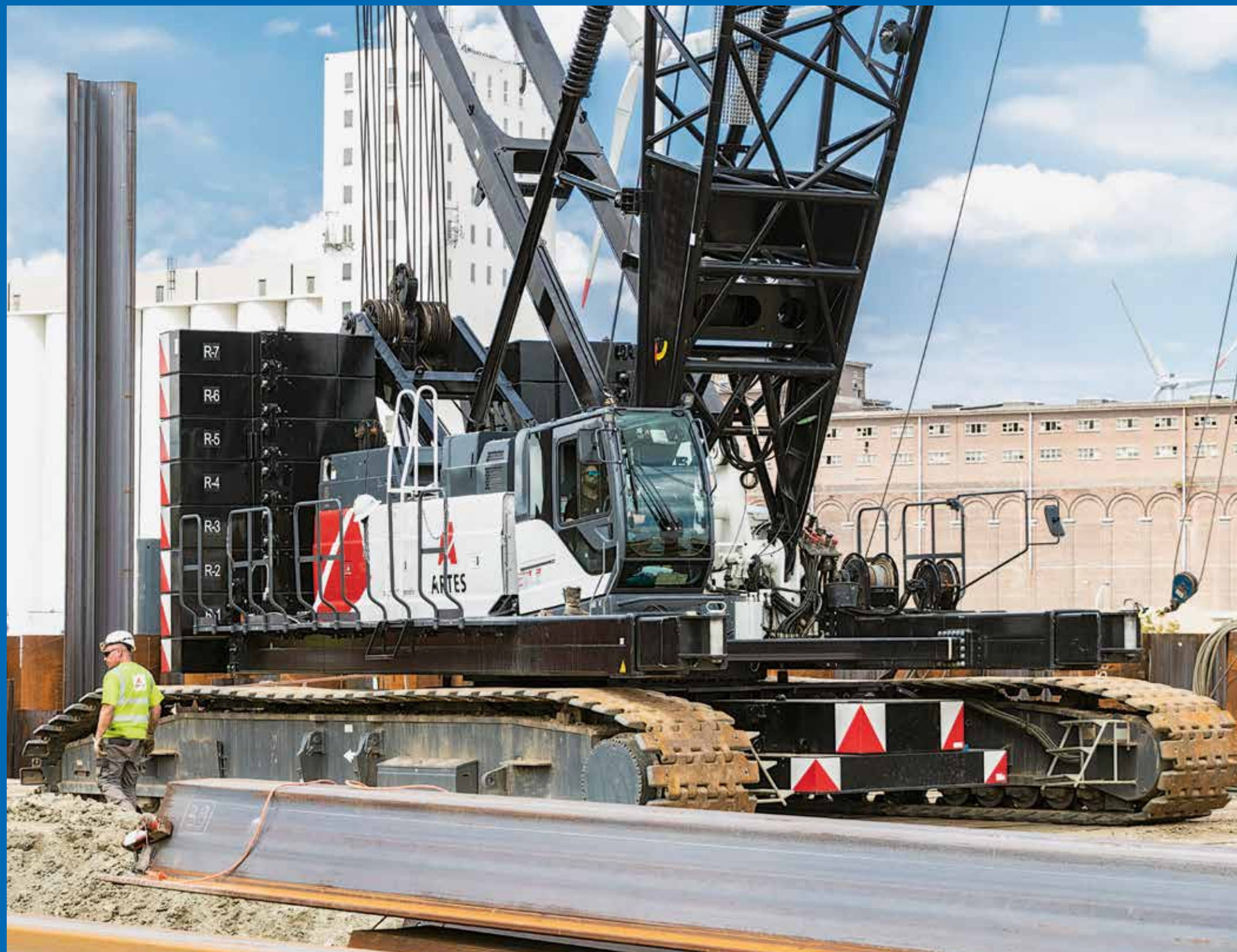
However, due to its age, condition, and limited dimensions, it required comprehensive renovation and enlargement to meet the demands of modern inland vessels and the increasing volume of waterborne traffic on the Albert Canal.

To complete the work, Artes Group deployed three Kobelco cranes on the project: a CKE2500G-2 operated by Artes Roegiers on its barge Paula, where it has been working for over 12 months, a CKE2500G-2 operated by Artes Depret, and a CKE800G-2 also operated by Artes Depret.

The cranes have played a crucial role in the foundation work, which involved the utilization of sheet piles, measuring approximately 29m in length and weighing up to 8.5 tonne each, with types ranging from AZ26-700 to AZ42-700. Combi-walls, consisting of 65 tubular piles primarily of type 1420/20, were also employed, measuring around 27m in length and weighing approximately 21 tonne each.

The cranes operated at working radii of approximately 15-16m, showcasing their versatility and adaptability to the demands of the project.

The Artes Roegiers operated CKE2500G-2, equipped with a 55m boom and a 70-tonne hook



**“These reliable and robust Kobelco cranes have demonstrated exceptional performance and have been integral to the success of the expansion project.”**

Wouter de Roover, site manager,  
Artes Rogiers.

block, and the Artes Depret CKE2500G-2, equipped with a 48.8m boom and a 70-tonne hook block, have been working on site constructing the foundations for the past year and half a year, respectively, while Artes Depret's CKE800G-2, equipped with a 42.7m boom and a 50-tonne hook block, has been part of the project for a year already.

“These reliable and robust Kobelco cranes have demonstrated exceptional performance and have been integral to the success of the expansion project,” said Wouter de Roover, site manager, Artes Rogiers.

The foundation work primarily involved constructing sheet pile walls using the 29m-long sheet

piles and creating combi-walls with the use of 27m-long piles and sheet piles. Driving the sheet piles the CKE2500G-2 used a Dieseko vibrohammer and “Tilt Block” and a CAPE VLT 80 Vibrohammer, which are renowned in the construction industry for their efficient pile driving capabilities.

Using the CAPE VLT-80, which is certified for upending and lifting under Lloyd's Register CLAME and is manufactured by CAPE Holland, meant the job could be carried out with just one crane instead of the two cranes normally required using the traditional installation method with a standard vibrohammer without upending functionality, saving money with less equipment needed, while saving time by speeding up the installation process.

These innovative tools, alongside Artes' Kobelco crawler cranes, ensured precise installation of the sheet piles and combi-walls, guaranteeing the stability and integrity of the lock's foundation for generation's to come.

“The collaborative efforts of the Artes Group's Roegiers and Depret divisions, Kobelco's crawler cranes, and the cutting-edge vibrohammer equipment have been pivotal in the ongoing expansion of the Roeyers Lock,” said de Roover.

“This transformative project is set to enhance the region's transportation capabilities and contribute to a more sustainable mode of freight transport, supporting economic growth and environmental preservation.”





In Madrid, on a tightly confined construction site, Silsoil faced the challenge of installing a diaphragm wall for a high-rise office development. The crowded city centre site's limited access, saw Silsoil devise an innovative solution for getting its Kobelco BME800G-2 on site.

Within the confined space of the foundation pit the BME800G-2 then proceeded to install 3.300m<sup>2</sup> of 450mm diaphragm wall (mura pantalla, in Spanish), plus 900m<sup>2</sup> of 800mm diaphragm wall, to a maximum depth of 18m.

"To finalize installation of the foundations, we utilized our own custom-designed diaphragm wall-grabs, weighing 10-14 tonnes, capable of installing diaphragm wall to a depth of 18m."

Started in 1995 by the Silveira family, Madrid-based Silsoil has specialized in the construction of deep wall foundations, working with bored piles and diaphragm wall buckets, which Silsoil also manufactures and sells, from 300 up to 1500mm wall thickness.

Initially focused on its domestic market, particularly the urban centres of Madrid and Barcelona, the company's expertise in the bridge, tunnel, water, sanitation, and marine works sectors means its skill set is now in demand internationally, including in Algeria, Portugal, Mexico, Argentina, and Uruguay.

Throughout Silsoil's journey, one constant has powered its projects - Kobelco cable excavators. Its fleet currently boasts a formidable

# Silsoil: Contractor Spotlight

**Founded in 1995 to capitalise on Spain's booming commercial building sector, specialist contractor Silsoil is now active across three continents**

lineup of 12 Kobelco cable excavators, including: 60-tonne BM600, 70-tonne BME700HD,

75-tonne BME750HD, 80-tonne BME800HD, and 80-tonne BME800G-2.

"The sheer robustness and unwavering production quality of these machines constantly amazes us," reveals David Silveira, managing director and CEO of Silsoil. "The smooth operation, precision, and reliability set these cranes apart in the foundation industry. We now depend almost entirely on Kobelco's to underpin a wide array of projects - from civil and industrial structures to colossal infrastructure endeavors."

## Tested and proven!

Thanks to its Kobelco's, Silsoil has conquered foundation projects in the most challenging environments, where room for error or machine downtime is simply non-negotiable.

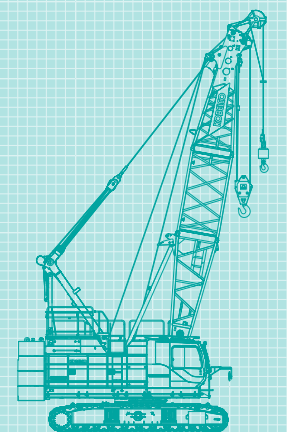
"Having the assurance that these machines won't falter is priceless

when it comes to securing and excelling in projects," adds Silveira. "Such unwavering faith in Kobelco has led us to a decision - even in regions or on ventures where manufacturer support might be lacking, our Kobelco machines will be there, ensuring the success of our foundation projects."

Looking to the future, Silveira expresses unwavering confidence in the enduring partnership between Silsoil and Kobelco Construction Machinery Europe.

"We've relied on Kobelco's for nearly three decades, and I eagerly anticipate incorporating the new 80, 100, and 120-tonne capacity Kobelco BME models into our foundation machine fleet as we embark on further expansion and growth."

## BME800G-2



ENGINE: STAGE VI/TIER 4 FINAL



MAX LIFT CAP: 80 TONNES





# Shipyard relaunch

**Q Crane & Plant Hire supplies two Kobelco crawler cranes for foundation work during the expansion of Shepard Offshore's Swan Energy Park on the North Bank of the River Tyne.**

Shepherd Offshore, one of the UK's leading service providers for the oil and gas, marine, renewable energy, and construction sectors is expanding its Swan Energy Park facility with

the construction of a new 50m section of piled quay wall.

Located on the banks of the River Tyne on the former Swan Hunter shipbuilding yard, the project will

help create a world-class operational facility to attract manufacturing businesses to the North East region.

The former shipyard has been an



important part of the local economy since Charles Sheridan Swan opened it in 1842. High profile ships like the Ark Royal and Illustrious were built at the site, and in 1907 it saw the launch of the Mauretania.

Currently home to 268m of deep-water quay with heavy load-out facilities, adjacent wet berth, and support areas, Swans Energy Park's 31.96-acre site includes access roads, two quays, two river berths, and a wet berth facility.

Southbay Civil Engineering is carrying out the works, which started in November 2022 and are expected to finish in late September 2023, using two Kobelco crawler cranes – a 110-tonne capacity CKE1100G-2 and a 135-tonne capacity CKE1350-1F - on hire from Q Crane & Plant Hire.

Both machines were fitted with 48.8m jibs and were on site for 11 and 18 weeks respectively. The maximum lift height of the CKE1350 during operation was 42m with a capacity at radius of 19 tonnes.

Piling operations utilized a



4-tonne PVE 2315 crane suspended vibrator and a 9-tonne BSP CX110 drop hammer, supplied by Watson & Hillhouse. The PVE 2315 has an eccentric moment of 15kgm, a maximum centrifugal force of 870kN, and a maximum frequency of 2300rpm, while the BSP CX110 has a ram mass of 9000kg, with a maximum impact energy of 106kNm, and a blow rate of 36bpm.

The 50m-long quay wall includes 16no. 1420mm tubular piles, which are connected via 22 to 50m-long tie bars, to 13no. 1220mm anchor piles.

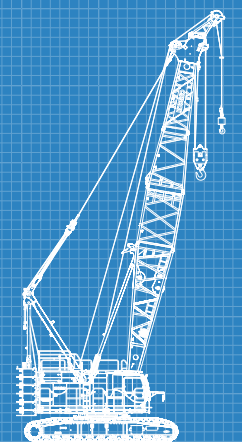
The structure includes 47no. 660mm tubular bearing piles, which are used to support a new

60 x 50m reinforced concrete (RC) deck slab, which will have a bearing capacity of 20 tonnes/m2.

New quayside facilities include 3no. ladders and 3no. 100-tonne bollards.

'We are immensely proud to be involved in the redevelopment of a site which holds great historic importance to the North East Region. This new quayside facility demonstrates our client's commitment to attracting increased investment in the area.' Antony Ballantyne, Operations Director.

**CKE1350G**



ENGINE: STAGE VI/TIER 4 FINAL



MAX LIFT CAP: 150 TONNES



# KCROSS

## - Crane Remote Observation Satellite System -



KOBELCO has developed a remote operation management system for our cranes. Machines fitted with this system transmit working condition, location, and maintenance history to provide owners with fact-based information that gives tremendous advantages for their asset management.

### Main Functions



LOCATION

#### > Acquire Working Condition and Location of the Fleet

The system is based on satellite mapped images, Internet connection, and other means to remotely monitor a crane's working condition and its location. This information is useful in planning maintenance schedules and providing guidance to operators, helping to ensure that crane owners can maximize their fleet efficiency.



WORKING

#### > Managing Safety/Operational Records and Monitoring Working Status

Crane owners can monitor and record the working condition and operational status of onsite machines on entire fleet basis, promoting greater crane safety.



SAFETY

#### > Remote Failure Diagnosis

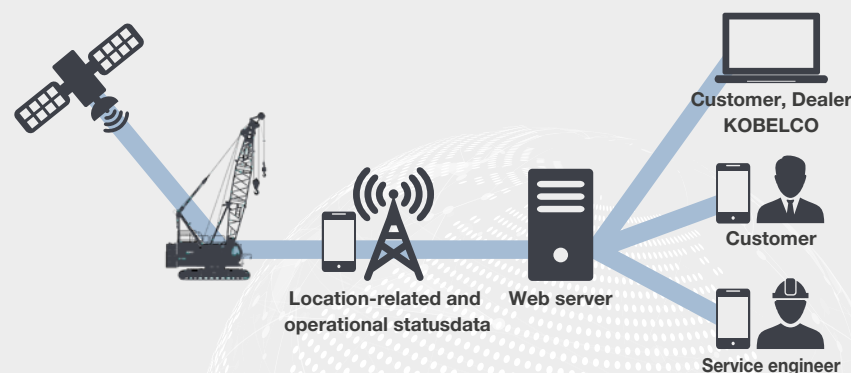
It is possible to narrow down possible failure causes quicker and more accurately by remotely accessing to the current and historical status of the machine, helping to minimize the machine downtime.



MAINTENANCE

#### > Preventive Maintenance Ensures Good Machine Condition and Protects Value

The system recommends appropriate parts replacement timing based on the machine working hour. Regular maintenance can help the machines running at peak performance at all times.



### Viewing of machine data via the Internet allows provision of complex machine data

Using the Internet, customers can check on a crane's operational status from the office, and its location can be checked with GPS. Operation data such as whether or not a crane is in operation, total operating and idling hours, etc., is displayed in easy-to-read graph and table formats.



Location display



KCROSS reports  
(Possible to customize data)

### Detailed Machine and Operation Data Can Be Accessed over the Internet

Operating data for a given crane can be accessed and accurately monitored from the Internet terminal in the crane owner's office.

#### Main Data Handled

- Map: Shows past and latest locations and travel history of all machines in the owner's fleet.
- Performance record: Hours of operation, Lift operations, and Safety record in the period of a day, a week, or other desired span.
- At-a-glance function: Outputs a report (in the form of a record log or sheet) that shows whether or not the machine is currently operating, its total operating hours, and other operating data.



### Operation data can be received on a mobile phone

When necessary, this system can send data as a text message to a mobile phone



#### Equipment required

- IT controller
- IT antenna, GPS antenna
- Set-up package (including bracket, signal relay harness and software)
- Computer with broadband connection for internet access (Microsoft IE6.0)
- Excel software (Microsoft Office 2000 or later) to view downloaded documents

#### Equipment required

- KOBELCO hydraulic crawler cranes, including some existing models

## Contractor spotlight: BRAET

Established in 1889 and headquartered in Nieuwpoort, Belgium, BRAET is a multi-disciplinary contractor and project management company skilled in the delivery of large and medium-sized projects, including construction, facade and concrete renovation, hydraulic engineering and civil construction, and Explosive Ordnance Disposal (EOD).

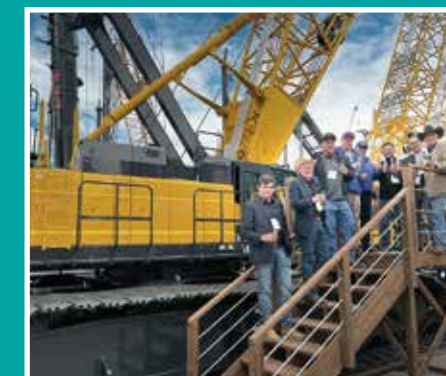




# **CONEXPO CON/AGG**

Stars of the show for crane fans visiting the Kobelco Construction Machinery USA Inc. stand at this year's ConExpo-ConAgg Show (Las Vegas, US - 14 to 18 March 2023), were the first of Kobelco's "repowered" G-3 series crawler cranes: the CK1600G-3 – 160 US tons (145 tonnes), the CK2000G-3 – 200 US tons (181 tonnes), and the CK2750G-2 – 275 US tons (249 tonnes).

Re-engineered with the Isuzu Tier 4 compliant engine, other new features of the G-3 Series include a new cab design offering improved visibility, comfort, and safety alongside new features, such as blue tooth and USB capabilities, and an updated paint scheme for a more stylish and contemporary look.





# STAY IN TOUCH...



Follow Kobelco Cranes Europe on Instagram - @kobelcocraneseurope - and tag us with #kobelco #KCME #kobelcocranes for your chance to win exclusive Kobelco goodies from our Fan Shop every month!



Keep up-to-date with our latest product launches, company news, exclusive events, pictures and video via LinkedIn.

Don't forget to visit [kobelco.com](http://kobelco.com) where you'll find information on all our cranes and related products, and you can download issues of our customer magazine straight to your desktop or mobile device!



## KOBELCO

### Grab your genuine

# FILTERS

### FOR MACHINE MAINTENANCE



Contact us today for quotations and more information!

KOBELCO CONSTRUCTION MACHINERY EUROPE (UK)

EMAIL: [clive.harber@kobelco.com](mailto:clive.harber@kobelco.com)

TELEPHONE: +44-(0)1342-301122

## KOBELCO



## Visit the Kobelco Fanshop today!

[www.kobelcofanshop.com](http://www.kobelcofanshop.com)





# KOBELCO

**KOBELCO CONSTRUCTION  
MACHINERY EUROPE B.V.**  
(The Netherlands)  
Veluwezoom 15, 1327 AE Almere,  
The Netherlands  
T: +31-36-549-5510

European countries & Israel



**Sales: Jos Verhulst**  
M: +31-(0)6-5346-8439  
E: jos.verhulst@kobelco.com

European countries & Israel



**Service & Technical support:  
Rene Kraakman**  
M: +31-(0)6-5335-3552  
E: rene.kraakman@kobelco.com

European countries & Israel



**Spare parts: Jo-Anne Lehmann**  
T: +31-(0)36-549-5510  
E: joanne.lehmann@kobelco.com



**Masakazu Usami**  
**Division Director Cranes**  
T: +31-(0)36-549-5510  
E: usami.masakazu@kobelco.com

European countries & Israel



**Service & Technical Support:  
Marcel Thole**  
M: +31-6-2123-4180  
E: marcel.thole@kobelco.com

**KOBELCO CONSTRUCTION  
TECHNICAL TEAM**



**Manager Service Dept:  
Hiroyuki Nishikawa**  
T: +31-(0)36-549-5510  
E: nishikawa.hiroyuki1@kobelco.com

**UK, Ireland & Africa**  
**KOBELCO CONSTRUCTION  
MACHINERY EUROPE B.V. (UK)**  
Unit 9, The Felbridge Centre, East  
Grinstead, West Sussex,  
RH19 1XP, UK  
T: +44-1342-301122

UK, Ireland & Africa



**Service & Technical support:  
James McCulley**  
M: +44-(0)-7795-552182  
E: james.mcculley@kobelco.com

UK, Ireland & Africa



**Service & Technical support:  
Sam Clarke**  
M: +44-(0)-7879-554686  
E: sam.clarke@kobelco.com

**UK, Ireland & Africa**



**Spare parts: Clive Harber**  
T: +44-(0)-1342-301122  
E: clive.harber@kobelco.com

**KOBELCO CONSTRUCTION  
MACHINERY EUROPE B.V.**  
(Germany) Germany,  
Austria and Switzerland

**KOBELCO CONSTRUCTION  
MACHINERY CO., LTD.**



**Marketing & Product  
Development: Detlef Brueckner**  
M: +49 170 4590515  
E: detlef.brueckner@kobelco.com